



Consulting Engineer's Certification

I, Mitchell GASSMAN, hereby certify that the As Constructed information shown on this plan is a true and correct record of the sizes, types, materials, classes etc., and it corresponds with the relevant approved Engineering Drawings.

Signed: *[Signature]* RPEQ No 16939 Dated: 19/02/2020

Registered Surveyor's Certification

I, Anthony GERAGHTY, hereby certify that the horizontal and vertical locations, and dimensions shown on this plan are a true and correct record of the As Constructed information.

Signed: *[Signature]* Reg. No 3222 Dated: 19/02/2020

NOTES

ALL SEWER LINES 150# uPVC SN8 u.n.o
 ALL SEWER HOUSE CONNECTIONS 100# uPVC SN6 u.n.o.

- LEGEND**
- SEWER MAINTENANCE SHAFT
 - ⊙ SEWER MANHOLE
 - ◻ RODDING END
 - SEWER BEND
 - SEWER LINES
 - SEWER HOUSE CONNECTIONS
 - ⊔ SEWER ENDCAP



gassman development perspectives planning design environment surveying

Gold Coast and Logan Office
 Access Business Park
 76 Business Street Yatala Q. 4207
 t: (07) 38073333
 f: (07) 32875461
 w: www.gassman.com.au

Issue	Date	Description	PC	TH
-	28-01-2020	ORIGINAL ISSUE	PC	TH
			DRN	CHK

Project: **RIVERTON**
 Cusack Lane, Jimboomba

Client: **A.V.JENNINGS**

©2012 Gassman Development Perspectives
 All rights reserved. No part of this document may be reproduced or transmitted in any form or by any means, electronic, mechanical, photocopying, recording, or otherwise, without the written permission of Gassman Development Perspectives.

Scale at A1: **1:500**

Date: **28-01-20**

Surveyed: **TH**

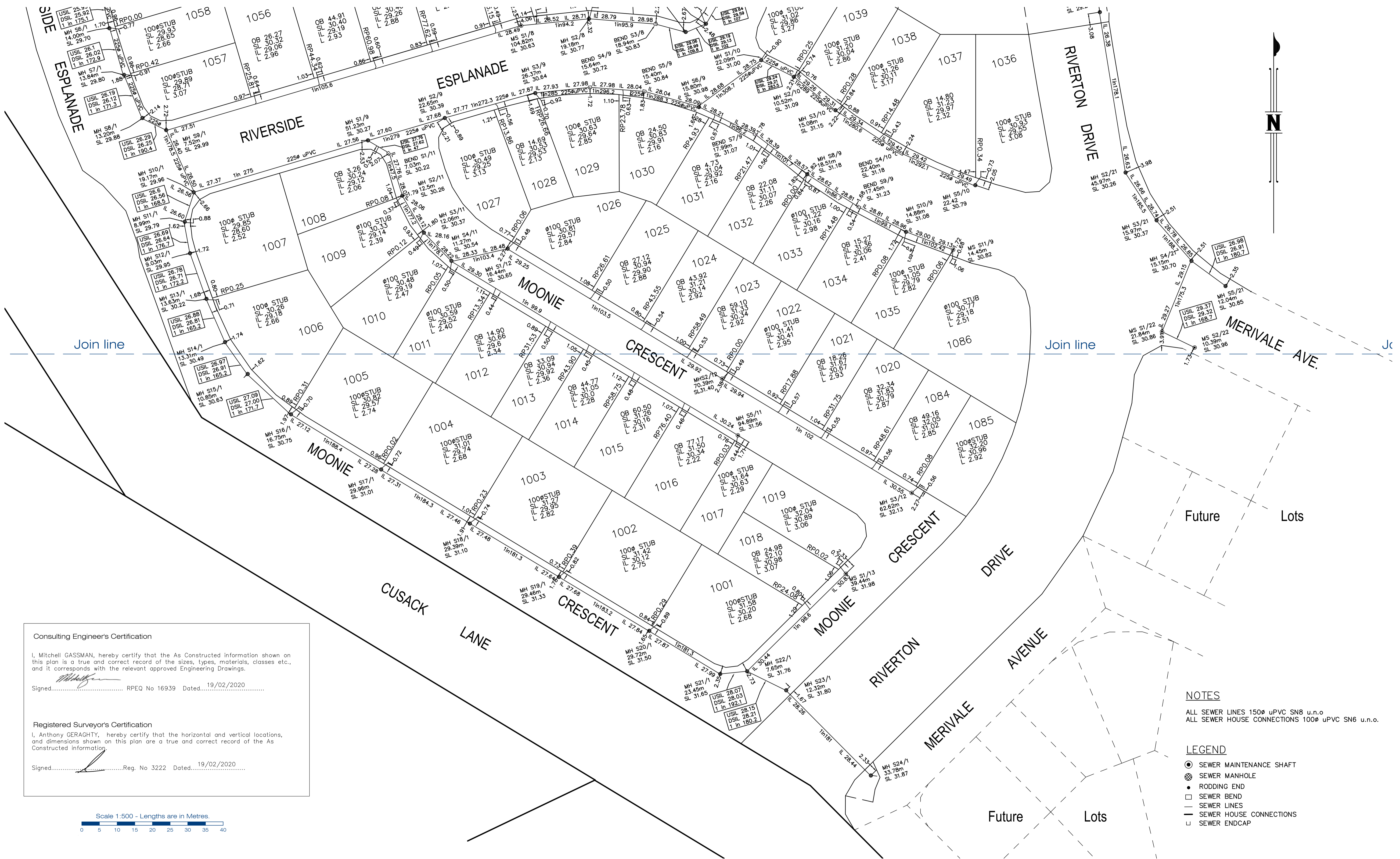
Drawn: **PC**

Checked: **TH**

Drawing Title: **AS CONSTRUCTED PLAN**
STAGE 1 - SEWER

SHEET 1 of 2

Drawing No: **5544-500-STG1 SEWER** Revision No: **-**



Consulting Engineer's Certification
 I, Mitchell GASSMAN, hereby certify that the As Constructed information shown on this plan is a true and correct record of the sizes, types, materials, classes etc., and it corresponds with the relevant approved Engineering Drawings.
 Signed..... RPEQ No 16939 Dated..... 19/02/2020

Registered Surveyor's Certification
 I, Anthony GERAGHTY, hereby certify that the horizontal and vertical locations, and dimensions shown on this plan are a true and correct record of the As Constructed information.
 Signed..... Reg. No 3222 Dated..... 19/02/2020



- NOTES**
 ALL SEWER LINES 150Ø uPVC SN8 u.n.o
 ALL SEWER HOUSE CONNECTIONS 100Ø uPVC SN6 u.n.o.
- LEGEND**
- SEWER MAINTENANCE SHAFT
 - ⊗ SEWER MANHOLE
 - RODDING END
 - ◻ SEWER BEND
 - SEWER LINES
 - SEWER HOUSE CONNECTIONS
 - ┘ SEWER ENDCAP

gassman development perspectives
 planning design environment surveying

Gold Coast and Logan Office
 Access Business Park
 76 Business Street Yatala Q. 4207
 t: (07) 38073333
 f: (07) 32875461
 w: www.gassman.com.au

Issue	Date	Description	PC	TH	DRN	CHK
-	28-01-2020	ORIGINAL ISSUE				

Project: **RIVERTON**
 Cusack Lane , Jimboomba

Client: **A.V.JENNINGS**

©2012 Gassman Development Perspectives
 All rights reserved. No part of this document may be reproduced or transmitted in any form or by any means, electronic, mechanical, photocopying, recording, or otherwise, without the written permission of Gassman Development Perspectives.

Scale at A1: **1:500**

Date: **28-01-20**

Surveyed: **TH**

Drawn: **PC**

Checked: **TH**

Drawing Title: **AS CONSTRUCTED PLAN**
STAGE 1 - SEWER

SHEET 2 of 2

Drawing No: **5544-500-STG1 SEWER**

Revision No: **-**



Consulting Engineer's Certification
 I, Mitchell GASSMAN, hereby certify that the As Constructed information shown on this plan is a true and correct record of the sizes, types, materials, classes etc., and it corresponds with the relevant approved Engineering Drawings.
 Signed: [Signature] RPEQ No 16939 Dated: 19/02/2020

Registered Surveyor's Certification
 I, Anthony GERAGHTY, hereby certify that the horizontal and vertical locations, and dimensions shown on this plan are a true and correct record of the As Constructed information.
 Signed: [Signature] Reg. No 3222 Dated: 19/02/2020

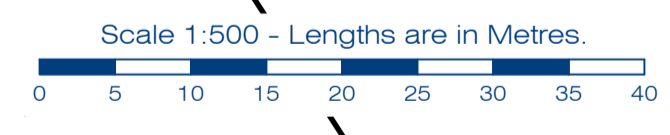
WATERMAIN FITTINGS

No.	ITEM
1	150#x11.25" BEND
2	150#x22.5" BEND
3	150#x45" BEND
4	150#x90" BEND
5	150#x100#TEE
6	150# SLUICE VALVE
7	150#x100 FIRE HYDRANT
8	150# ENDCAP
9	100#x11.25" BEND
10	100#x22.5" BEND
11	100#x45" BEND
12	100#x90" BEND
13	100#x100#TEE
14	100# SLUICE VALVE
15	100#x100 FIRE HYDRANT
16	100# ENDCAP
17	PIPE DEFLECTION
18	200#x200# TEE
19	200#x11.25" BEND
20	200#x22.5" BEND
21	200#x150# TEE
22	#200#x90" BEND
23	200#x100 FIRE HYDRANT
24	200# SLUICE VALVE
25	200# ENDCAP
26	150#x150# TEE
27	150#x100# REDUCER
28	#200#x45" BEND

NOTES
 ALL WATERMANS 100# uPVC-m PN16 u.n.o.
 ALL WATERMANS ROAD CROSSINGS 100# DICL PN35 u.n.o.

FEATURE LEGEND

- WATER HYDRANT
- T WATER TEE
- ⊥ WATER SLUICE VALVE
- ⊞ WATER ENDCAP
- WATER DICL
- WATER CONDUITS
- > REDUCER



gassman development perspectives
 planning design environment surveying
 Gold Coast and Logan Office
 Access Business Park
 76 Business Street Yatala Q. 4207
 t: (07) 38073333
 f: (07) 32875461
 w: www.gassman.com.au

Issue	Date	Description	DRN	CHK
B	11-02-2020	Fire Hydrant sizes amended	PC	TH
-	28-01-2020	ORIGINAL ISSUE	PC	TH

Project: **RIVERTON**
 Cusack Lane , Jimboomba

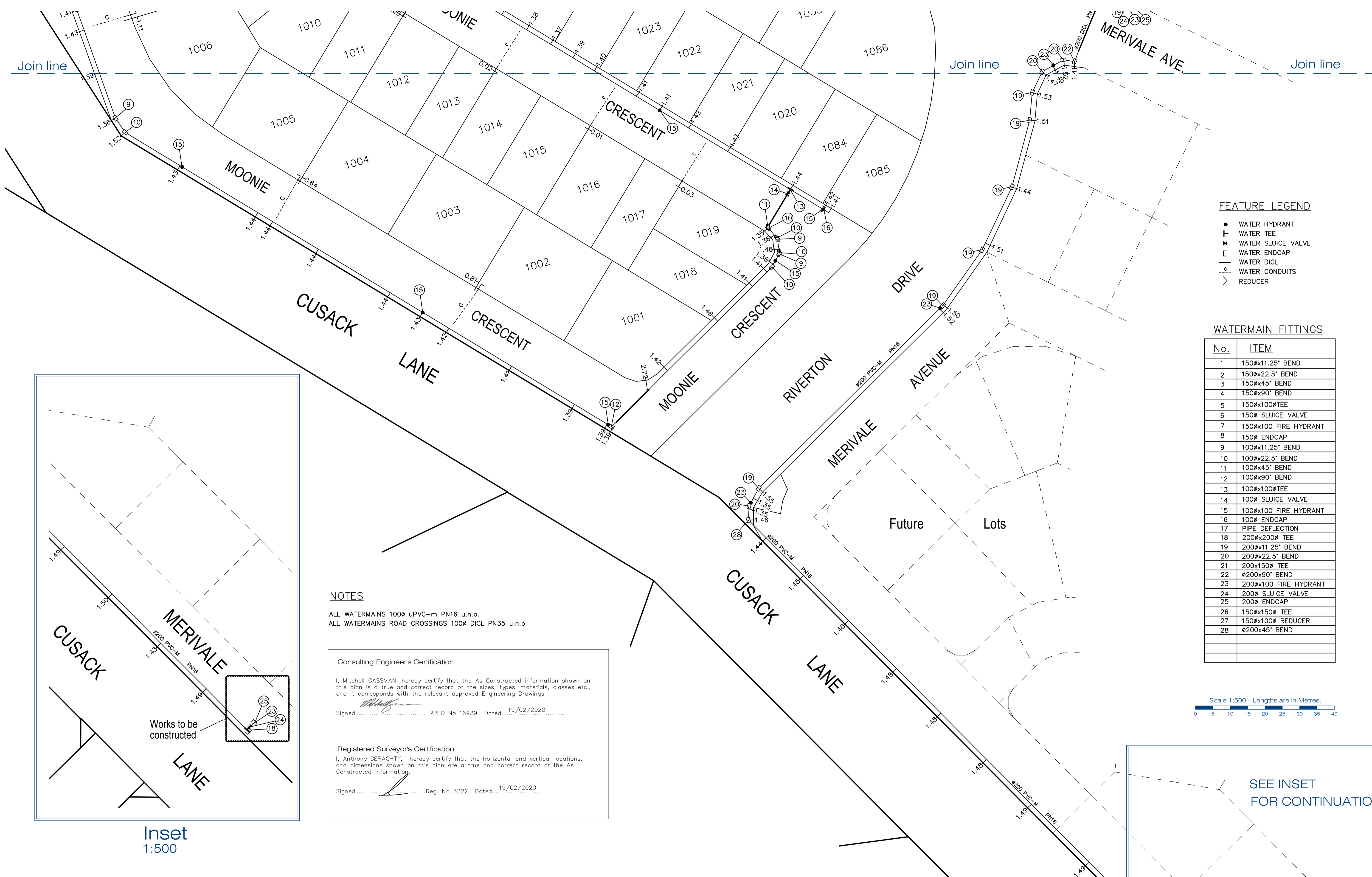
Client: **A.V.JENNINGS**

©2012 Gassman Development Perspectives
 All rights reserved. No part of this document may be reproduced or transmitted in any form or by any means, electronic, mechanical, photocopying, recording, or otherwise, without the written permission of Gassman Development Perspectives.

Scale at A1: **1:500**
 Date: **20-03-20**
 Surveyed: **TH**
 Drawn: **PC**
 Checked: **TH**

Drawing Title:
AS CONSTRUCTED PLAN
STAGE 1 - WATER
 SHEET 1 of 2

Drawing No: **5544-500-STG1-WATER** Revision No: **B**



FEATURE LEGEND

- WATER HYDRANT
- T WATER TEE
- ⊕ WATER SLUICE VALVE
- ⌊ WATER ENDCAP
- WATER DICL
- WATER CONDUITS
- > REDUCER

WATERMAIN FITTINGS

No.	ITEM
1	150x11.25" BEND
2	150x22.5" BEND
3	150x45" BEND
4	150x90" BEND
5	150x100#TEE
6	150# SLUICE VALVE
7	150x100 FIRE HYDRANT
8	150# ENDCAP
9	100x11.25" BEND
10	100x22.5" BEND
11	100x45" BEND
12	100x90" BEND
13	100x100#TEE
14	100# SLUICE VALVE
15	100x100 FIRE HYDRANT
16	100# ENDCAP
17	PIPE DEFLECTION
18	200x200# TEE
19	200x11.25" BEND
20	200x22.5" BEND
21	200x150# TEE
22	200x90" BEND
23	200x100 FIRE HYDRANT
24	200# SLUICE VALVE
25	200# ENDCAP
26	150x150# TEE
27	150x100# REDUCER
28	200x45" BEND

NOTES

ALL WATERMAINS 100# uPVC-m PN16 u.n.o.
 ALL WATERMAINS ROAD CROSSINGS 100# DICL PN35 u.n.o.

Consulting Engineer's Certification

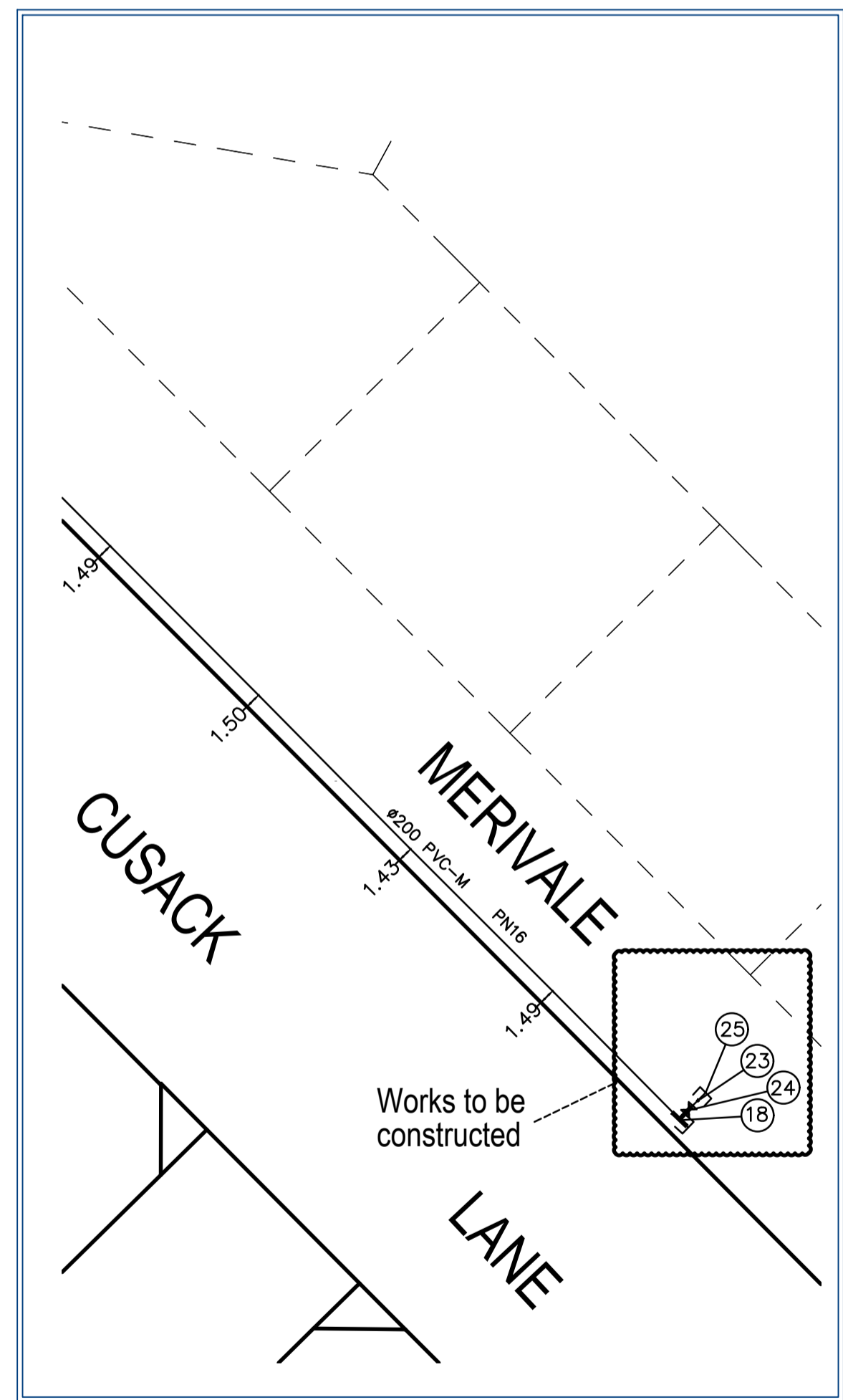
I, Mitchell GASSMAN, hereby certify that the As Constructed information shown on this plan is a true and correct record of the sizes, types, materials, classes etc., and it corresponds with the relevant approved Engineering Drawings.

Signed: *[Signature]* RPEQ No 16939 Dated: 19/02/2020

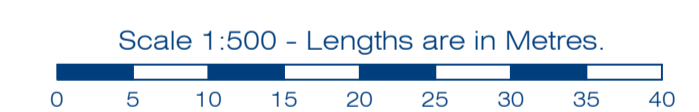
Registered Surveyor's Certification

I, Anthony GERAGHTY, hereby certify that the horizontal and vertical locations, and dimensions shown on this plan are a true and correct record of the As Constructed information.

Signed: *[Signature]* Reg. No 3222 Dated: 19/02/2020



Inset
1:500



SEE INSET FOR CONTINUATION

gassman development perspectives
 planning design environment surveying

Gold Coast and Logan Office
 Access Business Park
 76 Business Street Yatala Q. 4207
 t: (07) 38073333
 f: (07) 32875461
 w: www.gassman.com.au

Issue	Date	Description	DRN	CHK
B	11-02-2020	Fire Hydrant sizes amended	PC	TH
-	28-01-2020	ORIGINAL ISSUE	PC	TH

Project: **RIVERTON**
 Cusack Lane , Jimboomba

Client: **A.V.JENNINGS**

©2012 Gassman Development Perspectives
 All rights reserved. No part of this document may be reproduced or transmitted in any form or by any means, electronic, mechanical, photocopying, recording, or otherwise, without the written permission of Gassman Development Perspectives.

Scale at A1: **1:500**

Date: **20-03-20**

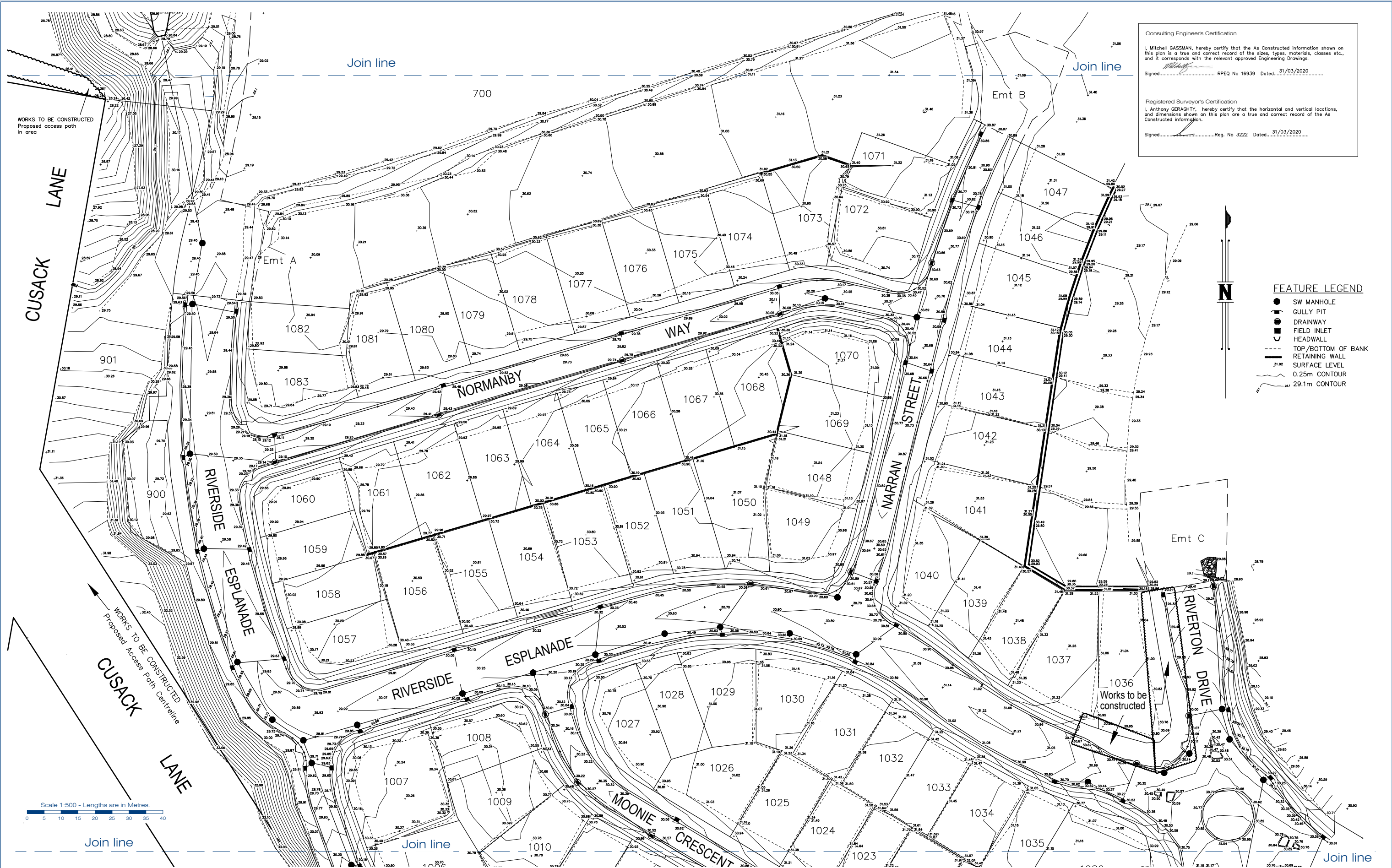
Surveyed: **TH**

Drawn: **PC**

Checked: **TH**

Drawing Title:
AS CONSTRUCTED PLAN
STAGE 1 - WATER
 SHEET 2 of 2

Drawing No: **5544-500-STG1-WATER** Revision No: **B**



Consulting Engineers Certification
 I, Mitchell GASSMAN, hereby certify that the As Constructed information shown on this plan is a true and correct record of the sizes, types, materials, classes etc., and it corresponds with the relevant approved Engineering Drawings.
 Signed: _____ RPEQ No 16939 Dated: 31/03/2020

Registered Surveyor's Certification
 I, Anthony GERAGHTY, hereby certify that the horizontal and vertical locations, and dimensions shown on this plan are a true and correct record of the As Constructed information.
 Signed: _____ Reg. No 3222 Dated: 31/03/2020

- FEATURE LEGEND**
- SW MANHOLE
 - GULLY PIT
 - ▭ DRAINWAY
 - ▭ FIELD INLET
 - ▭ HEADWALL
 - TOP/BOTTOM OF BANK
 - ▬ RETAINING WALL
 - 31.82 SURFACE LEVEL
 - 0.25m CONTOUR
 - 29.1m CONTOUR

Scale 1:500 - Lengths are in Metres.
 0 5 10 15 20 25 30 35 40

gassman development perspectives | planning design environment surveying

Gold Coast and Logan Office
 Access Business Park
 76 Business Street Yatala Q. 4207
 t: (07) 38073333
 f: (07) 32875461
 w: www.gassman.com.au

Issue	Date	Description	PC DRN	TH CHK
-	13-02-2020	ORIGINAL ISSUE	PC	TH

Project: **RIVERTON**
 Cusack Lane, Jimboomba

Client: **A.V.JENNINGS**

©2012 Gassman Development Perspectives
 All rights reserved. No part of this document may be reproduced or transmitted in any form or by any means, electronic, mechanical, photocopying, recording, or otherwise, without the written permission of Gassman Development Perspectives.

Scale at A1: **1:500**

Date: **17-03-20**

Surveyed: **TH**

Drawn: **PC**

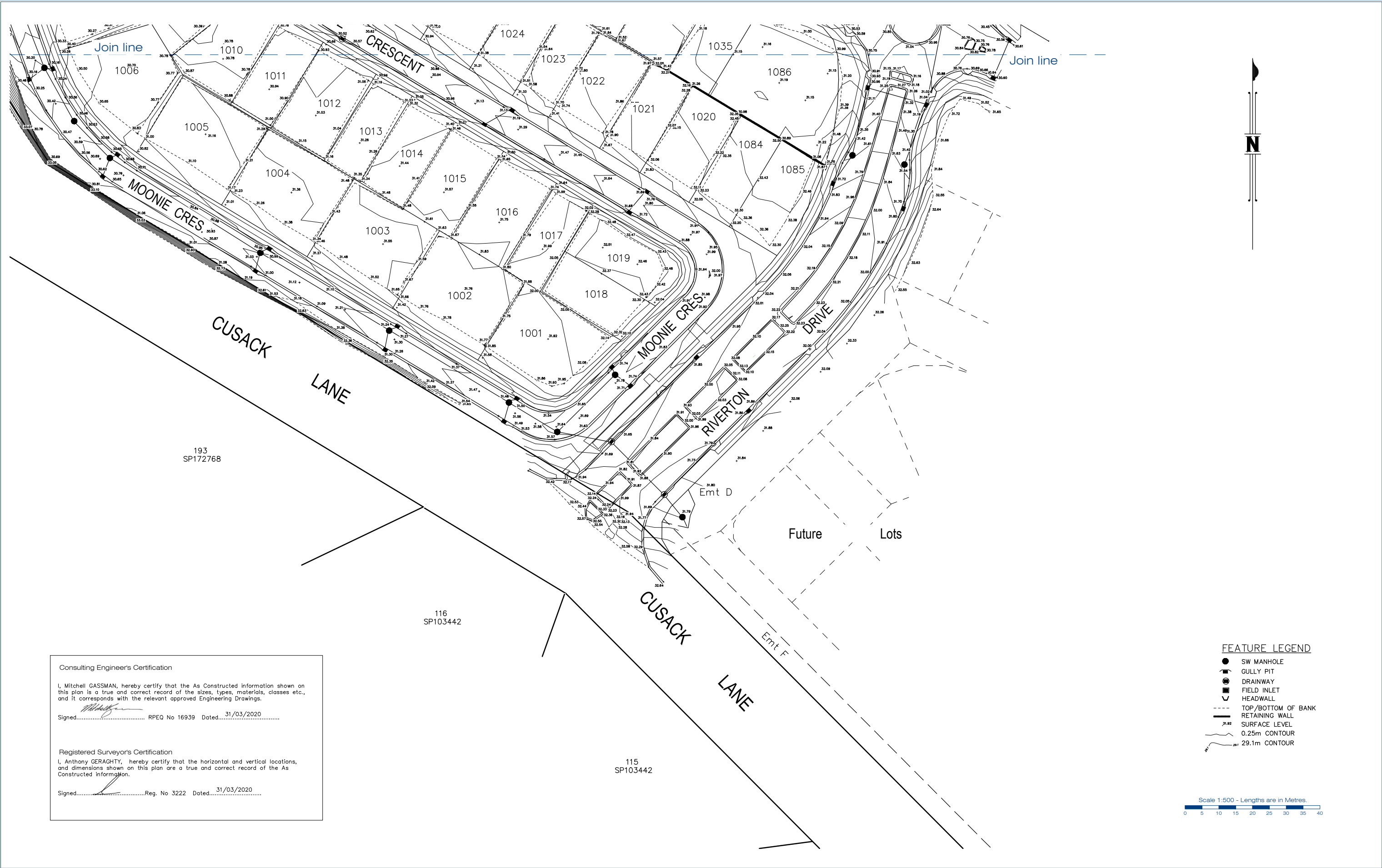
Checked: **TH**

Drawing Title: **PLAN OF AS CONSTRUCTED EARTHWORKS - STAGE 1**

SHEET 1 of 3

Drawing No: **5544 -500- STG 1 EARTHWORKS**

Revision No: _____



FEATURE LEGEND

- SW MANHOLE
- ⌋ GULLY PIT
- DRAINWAY
- ⌋ FIELD INLET
- ⌋ HEADWALL
- TOP/BOTTOM OF BANK
- RETAINING WALL
- 31.92 SURFACE LEVEL
- 0.25m CONTOUR
- 29.1m CONTOUR

Scale 1:500 - Lengths are in Metres.
 0 5 10 15 20 25 30 35 40

Consulting Engineer's Certification
 I, Mitchell GASSMAN, hereby certify that the As Constructed information shown on this plan is a true and correct record of the sizes, types, materials, classes etc., and it corresponds with the relevant approved Engineering Drawings.
 Signed..... RPEQ No 16939 Dated..... 31/03/2020

Registered Surveyor's Certification
 I, Anthony GERAGHTY, hereby certify that the horizontal and vertical locations, and dimensions shown on this plan are a true and correct record of the As Constructed information.
 Signed..... Reg. No 3222 Dated..... 31/03/2020

gassman development perspectives | planning design environment surveying

Gold Coast and Logan Office
 Access Business Park
 76 Business Street Yatala Q. 4207
 t: (07) 38073333
 f: (07) 32875461
 w: www.gassman.com.au

Issue	Date	Description	PC DRN	TH CHK
-	13-02-2020	ORIGINAL ISSUE	PC	TH

Project: **RIVERTON**
 Cusack Lane , Jimboomba

Client: **A.V.JENNINGS**

©2012 Gassman Development Perspectives
 All rights reserved. No part of this document may be reproduced or transmitted in any form or by any means, electronic, mechanical, photocopying, recording, or otherwise, without the written permission of Gassman Development Perspectives.

Scale at A1: **1:500**

Date: **17-03-20**

Surveyed: **TH**

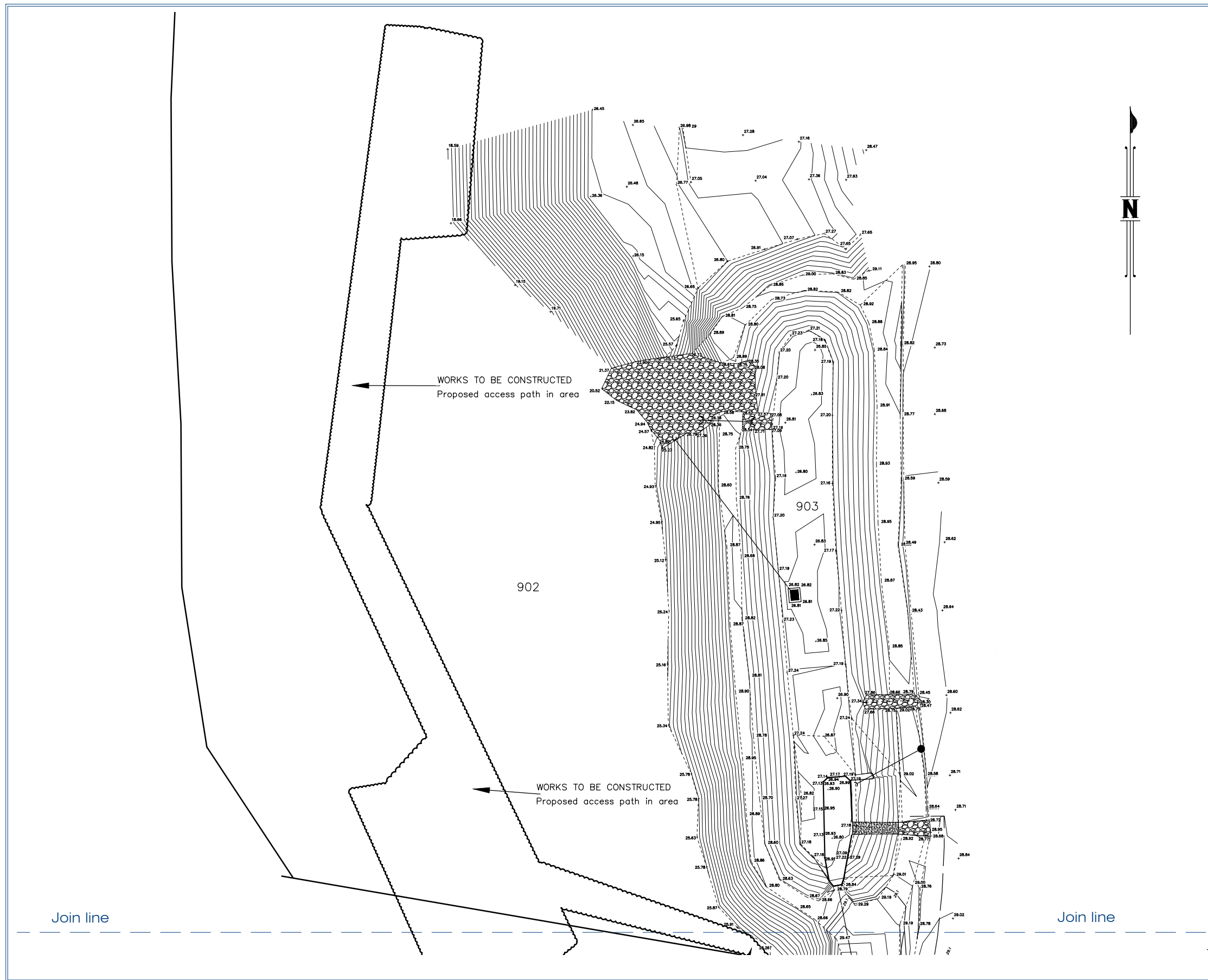
Drawn: **PC**

Checked: **TH**

Drawing Title: **PLAN OF AS CONSTRUCTED EARTHWORKS - STAGE 1**

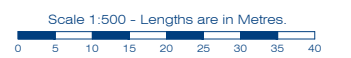
SHEET 2 of 3

Drawing No: **5544 -500- STG 1 EARTHWORKS** Revision No: **-**



FEATURE LEGEND

- SW MANHOLE
- ⊕ GULLY PIT
- ⊖ DRAINWAY
- ⊙ FIELD INLET
- ⊔ HEADWALL
- TOP/BOTTOM OF BANK
- ▬ RETAINING WALL
- SURFACE LEVEL
- ~ 0.25m CONTOUR
- ~ 29.1m CONTOUR



Consulting Engineer's Certification
 I, Mitchell GASSMAN, hereby certify that the As Constructed information shown on this plan is a true and correct record of the sizes, types, materials, classes etc., and it corresponds with the relevant approved Engineering Drawings.
 Signed: *[Signature]* RPEQ No 16939 Dated: 31/03/2020

Registered Surveyor's Certification
 I, Anthony GERAGHTY, hereby certify that the horizontal and vertical locations, and dimensions shown on this plan are a true and correct record of the As Constructed information.
 Signed: *[Signature]* Reg. No 3222 Dated: 31/03/2020

gassman development perspectives | planning design environment surveying

Gold Coast and Logan Office
 Access Business Park
 76 Business Street Yatala Q. 4207
 t: (07) 38073333
 f: (07) 32875461
 w: www.gassman.com.au

Issue	Date	Description	PC DRN	TH CHK
-	13-02-2020	ORIGINAL ISSUE		

Project: **RIVERTON**
 Cusack Lane , Jimboomba

Client: **A.V.JENNINGS**

©2012 Gassman Development Perspectives
 All rights reserved. No part of this document may be reproduced or transmitted in any form or by any means, electronic, mechanical, photocopying, recording, or otherwise, without the written permission of Gassman Development Perspectives.

Scale at A1: **1:500**

Date: **17-03-20**

Surveyed: **TH**

Drawn: **PC**

Checked: **TH**

Drawing Title: **PLAN OF AS CONSTRUCTED EARTHWORKS - STAGE 1**

SHEET 3 of 3

Drawing No: **5544 -500- STG 1 EARTHWORKS** Revision No: **-**



- FEATURE LEGEND**
- MANHOLE
 - ⊥ GULLY PIT
 - DRAINWAY
 - ⊥ FIELD INLET
 - HEADWALL
 - BLANKED OFF END
 - STORMWATER PIPE
 - EXISTING MANHOLE
 - EXISTING HEADWALL
 - ⊥ EXISTING GULLY PIT
 - EXISTING DRAINWAY
 - EXISTING STORMWATER PIPE

Consulting Engineers Certification

I, Mitchell GASSMAN, hereby certify that the As Constructed information shown on this plan is a true and correct record of the sizes, types, materials, classes etc., and it corresponds with the relevant approved Engineering Drawings.

Signed: *[Signature]* RPEQ No 16939 Dated: 31/03/2020

Registered Surveyor's Certification

I, Anthony GERAGHTY, hereby certify that the horizontal and vertical locations, and dimensions shown on this plan are a true and correct record of the As Constructed information.

Signed: *[Signature]* Reg. No 3222 Dated: 31/03/2020

Scale 1:500 - Lengths are in Metres.

0 5 10 15 20 25 30 35 40

Join line

gassman development perspectives | planning design environment surveying

Gold Coast and Logan Office
 Access Business Park
 76 Business Street Yatala Q. 4207
 t: (07) 38073333
 f: (07) 32875461
 w: www.gassman.com.au

Issue	Date	Description	PC	TH
-	28-01-2020	ORIGINAL ISSUE	PC	TH
			DRN	CHK

Project: **RIVERTON**
 Cusack Lane, Jimboomba

Client: **A.V.JENNINGS**

©2012 Gassman Development Perspectives
 All rights reserved. No part of this document may be reproduced or transmitted in any form or by any means, electronic, mechanical, photocopying, recording, or otherwise, without the written permission of Gassman Development Perspectives.

Scale at A1: **1:500**

Date: **31-03-20**

Surveyed: **TH**

Drawn: **PC**

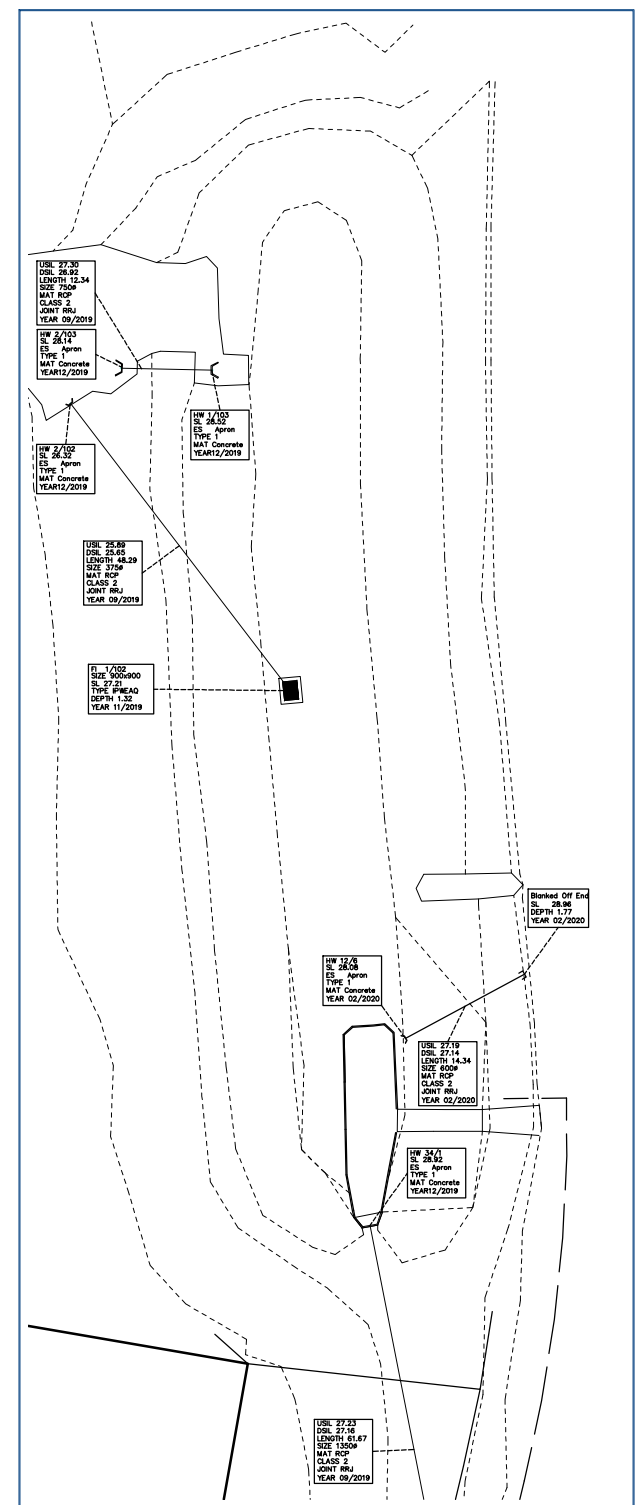
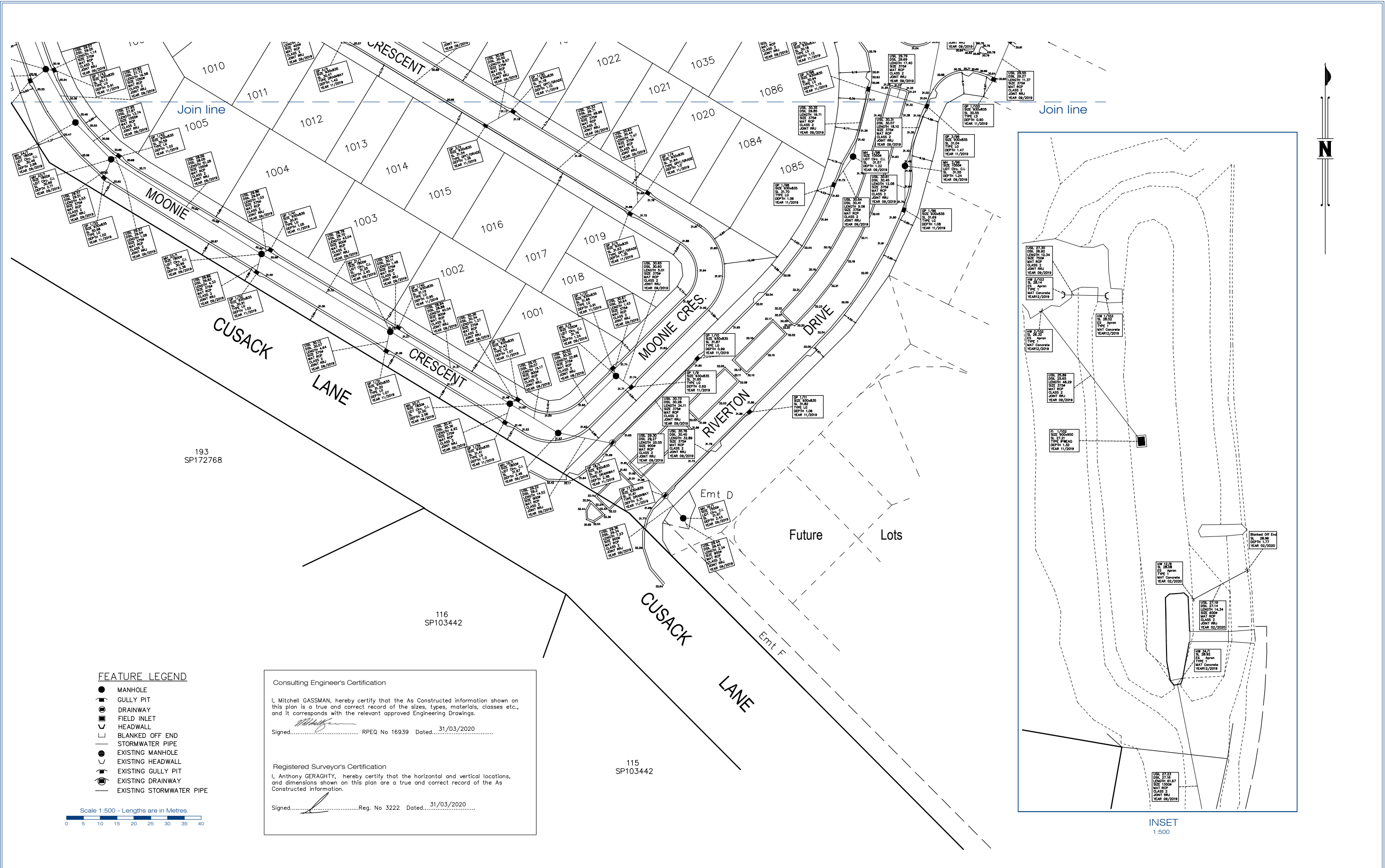
Checked: **TH**

Drawing Title: **PLAN OF AS CONSTRUCTED STORMWATER - STAGE 1**

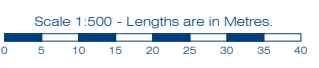
SHEET 1 of 2

Drawing No: **5544 -500- STG 1 STORMWATER**

Revision No: **-**



- FEATURE LEGEND**
- MANHOLE
 - ⊕ GULLY PIT
 - DRAINWAY
 - ⊓ FIELD INLET
 - ⊓ HEADWALL
 - ⊓ BLANKED OFF END
 - STORMWATER PIPE
 - EXISTING MANHOLE
 - EXISTING HEADWALL
 - EXISTING GULLY PIT
 - EXISTING DRAINWAY
 - EXISTING STORMWATER PIPE



Consulting Engineer's Certification

I, Mitchell GASSMAN, hereby certify that the As Constructed information shown on this plan is a true and correct record of the sizes, types, materials, classes etc., and it corresponds with the relevant approved Engineering Drawings.

Signed: *[Signature]* RPEQ No 16939 Dated: 31/03/2020

Registered Surveyor's Certification

I, Anthony CERAGHTY, hereby certify that the horizontal and vertical locations, and dimensions shown on this plan are a true and correct record of the As Constructed information.

Signed: *[Signature]* Reg. No 3222 Dated: 31/03/2020

gassman development perspectives | planning design environment surveying

Gold Coast and Logan Office
 Access Business Park
 76 Business Street Yatala Q. 4207
 t: (07) 38073333
 f: (07) 32875461
 w: www.gassman.com.au

Issue	Date	Description	DRN	CHK
B	17-03-2020	SW line details added, Emt added	PC	TH
A	28-01-2020	ORIGINAL ISSUE	PC	TH

Project: **RIVERTON**
 Cusack Lane , Jimboomba

Client: **A.V.JENNINGS**

©2012 Gassman Development Perspectives
 All rights reserved. No part of this document may be reproduced or transmitted in any form or by any means, electronic, mechanical, photocopying, recording, or otherwise, without the written permission of Gassman Development Perspectives.

Scale at A1:	1:500
Date:	31-03-20
Surveyed:	TH
Drawn:	PC
Checked:	TH

Drawing Title:
PLAN OF AS CONSTRUCTED STORMWATER - STAGE 1

SHEET 2 of 2

Drawing No: **5544 -500- STG 1 STORMWATER** Revision No: **B**