

Consulting Engineer's Certification
 I, hereby certify that the As Constructed information shown on this plan is a true and correct record of the sizes, types, materials, classes etc., and it corresponds with the relevant approved Engineering Drawings.
 Signed: RPEQ No. 16939 Dated: 04-02-2022

Registered Surveyor's Certification
 I, Anthony GERAGHTY, hereby certify that the horizontal and vertical locations, and dimensions shown on this plan are a true and correct record of the As Constructed information.
 Signed: Reg. No. 1718 Dated: 04-02-2022

JOINT TO SHEET 2

JOINT TO SHEET 3

NOTES
 ALL SEWER LINES 150# uPVC SN8 u.n.o
 ALL SEWER HOUSE CONNECTIONS 100# uPVC SN6 u.n.o.

- LEGEND**
- SEWER MAINTENANCE SHAFT
 - ⊗ SEWER MANHOLE
 - RODDING END
 - SEWER BEND
 - SEWER LINES
 - SEWER HOUSE CONNECTIONS
 - ⊔ SEWER ENDCAP

Scale 1:250 - Lengths are in Metres.
 0 2 4 6 8 10 12 14 16 18 20

gassman development perspectives
 est 1985
 planning | environment | landscape | engineering | survey
 T: 3807 3333 | F: 3287 5461 | www.gassman.com.au
 Gold Coast & Logan | 176 Business Street, Yatala QLD | PO Box 392, Beenleigh 4207

Issue	Date	Description	DRN	CHK
A	26/01/2022	ASCON ISSUE	SC	AG
-	23/11/2021	ORIGINAL ISSUE	SC	AG

Project: **RIVERTON STAGE 2B**
JIMBOOMBA

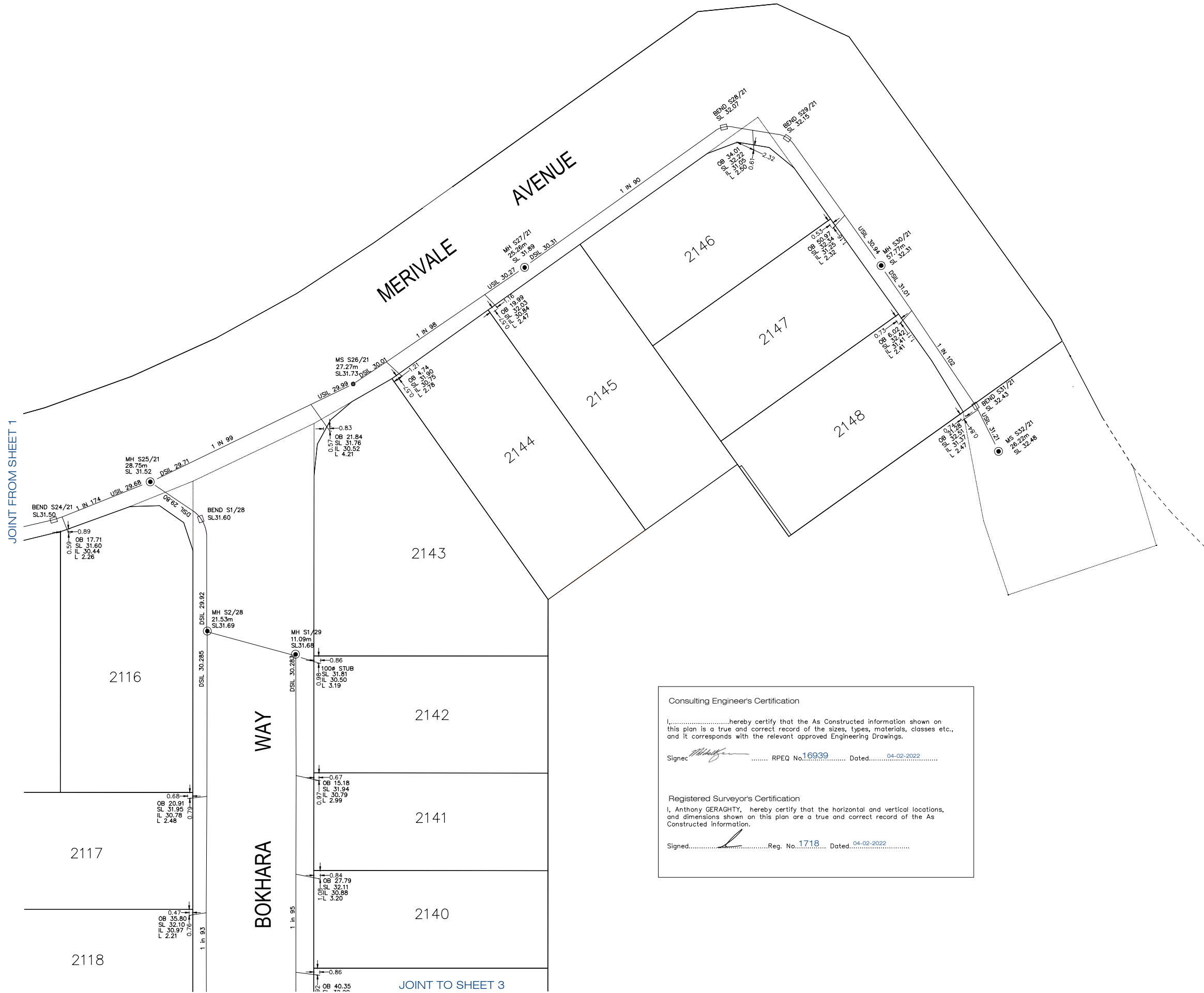
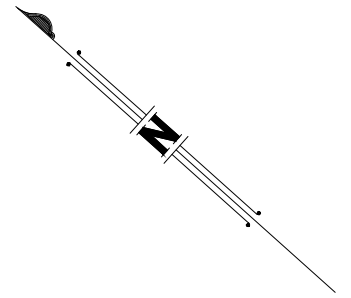
Client: **AVJENNINGS SPV NO. 20 PTY LTD**

©2012 Gassman Development Perspectives
 All rights reserved. No part of this document may be reproduced or transmitted in any form or by any means, electronic, mechanical, photocopying, recording, or otherwise, without the written permission of Gassman Development Perspectives.

Scale at A1: **1:250**
 Date: **04-02-22**
 Surveyed: **TH**
 Drawn: **SC**
 Checked: **AG**

Drawing Title: **AS CONSTRUCTED PLAN**
STAGE 2B - SEWER
SHEET 1 OF 3

Drawing No: **5544-250-STG 2B SEWER** Revision No: **A**



Consulting Engineer's Certification

I, hereby certify that the As Constructed information shown on this plan is a true and correct record of the sizes, types, materials, classes etc., and it corresponds with the relevant approved Engineering Drawings.

Signed: *[Signature]* RPEQ No. 16939 Dated: 04-02-2022

Registered Surveyor's Certification

I, Anthony GERAGHTY, hereby certify that the horizontal and vertical locations, and dimensions shown on this plan are a true and correct record of the As Constructed information.

Signed: *[Signature]* Reg. No. 1718 Dated: 04-02-2022

NOTES

ALL SEWER LINES 150Ø uPVC SN8 u.n.o
 ALL SEWER HOUSE CONNECTIONS 100Ø uPVC SN6 u.n.o.

- LEGEND**
- SEWER MAINTENANCE SHAFT
 - ⊗ SEWER MANHOLE
 - RODDING END
 - SEWER BEND
 - SEWER LINES
 - SEWER HOUSE CONNECTIONS
 - ⊏ SEWER ENDCAP

Scale 1:250 - Lengths are in Metres.



Issue	Date	Description	DRN	CHK
A	25/01/2022	ASCON ISSUE	SC	AG
-	23/11/2021	ORIGINAL ISSUE	SC	AG

Project: **RIVERTON STAGE 2B JIMBOOMBA**

Client: **AVJENNINGS SPV NO. 20 PTY LTD**

©2012 Gassman Development Perspectives
 All rights reserved. No part of this document may be reproduced or transmitted in any form or by any means, electronic, mechanical, photocopying, recording, or otherwise, without the written permission of Gassman Development Perspectives.

Scale at A1: **1:250**

Date: **04-02-22**

Surveyed: **TH**

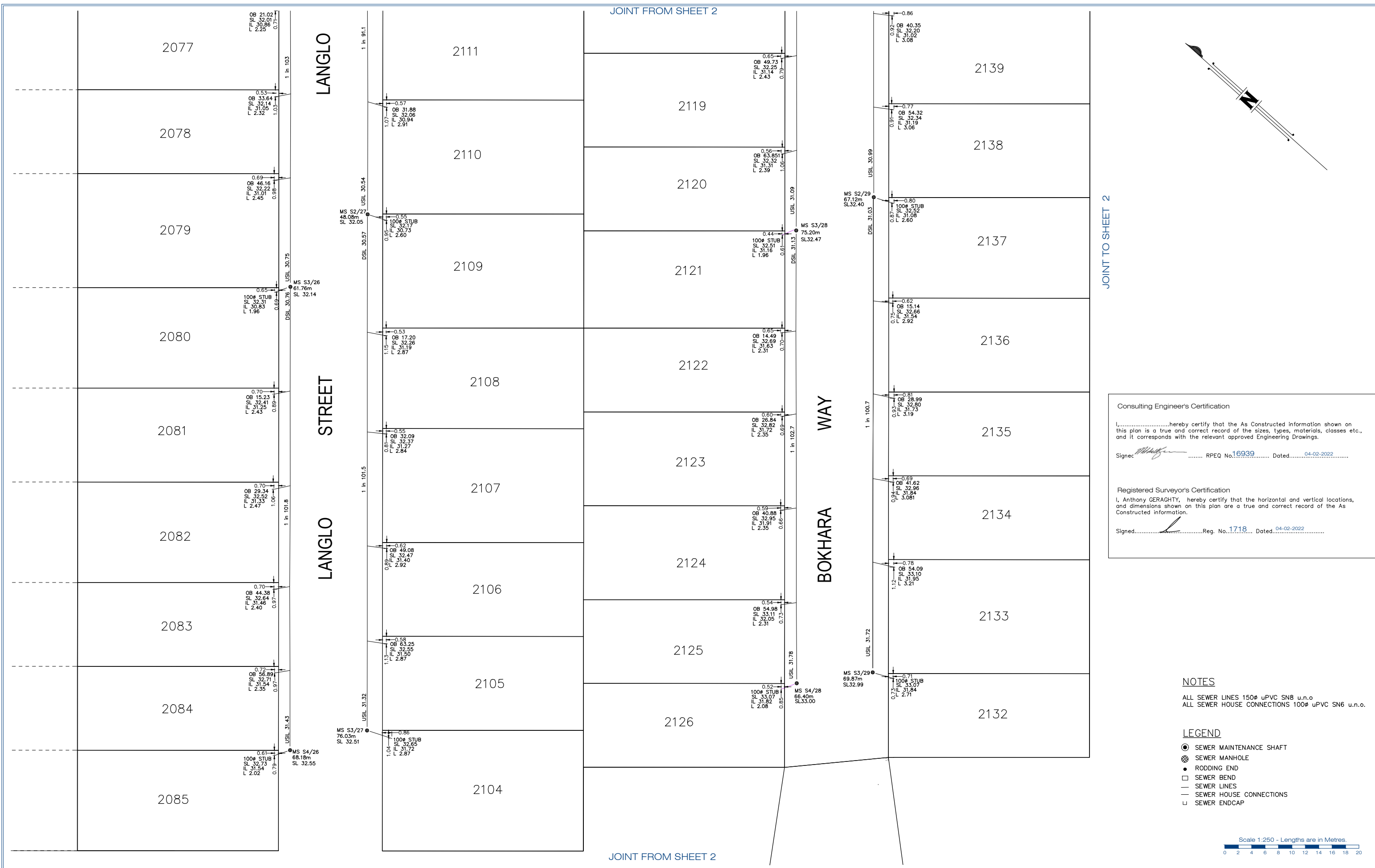
Drawn: **SC**

Checked: **AG**

Drawing Title: **AS CONSTRUCTED PLAN STAGE 2B - SEWER SHEET 2 OF 3**

Drawing No: **5544-250-STG 2B SEWER**

Revision No: **A**



Consulting Engineer's Certification
 I, hereby certify that the As Constructed information shown on this plan is a true and correct record of the sizes, types, materials, classes etc., and it corresponds with the relevant approved Engineering Drawings.
 Signed: RPEQ No. 16939 Dated: 04-02-2022

Registered Surveyor's Certification
 I, Anthony GERAGHTY, hereby certify that the horizontal and vertical locations, and dimensions shown on this plan are a true and correct record of the As Constructed information.
 Signed: Reg. No. 1718 Dated: 04-02-2022

NOTES
 ALL SEWER LINES 150Ø uPVC SN8 u.n.o
 ALL SEWER HOUSE CONNECTIONS 100Ø uPVC SN6 u.n.o.

LEGEND
 ● SEWER MAINTENANCE SHAFT
 ⊗ SEWER MANHOLE
 ● RODDING END
 □ SEWER BEND
 — SEWER LINES
 — SEWER HOUSE CONNECTIONS
 ⊏ SEWER ENDCAP

Scale 1:250 - Lengths are in Metres.
 0 2 4 6 8 10 12 14 16 18 20

gassman development perspectives
 est 1985
 planning | environment | landscape | engineering | survey
 T: 3807 3333 | F: 3287 5461 | www.gassman.com.au
 Gold Coast & Logan | 176 Business Street, Yatala QLD | PO Box 392, Beenleigh 4207

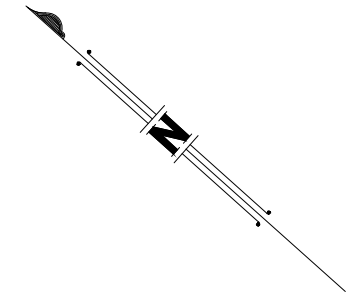
Issue	Date	Description	DRN	CHK
A	25/01/2022	ASCON ISSUE	SC	AG
-	23/11/2021	ORIGINAL ISSUE	SC	AG

Project: RIVERTON STAGE 2B
 JIMBOOMBA
 Client: AVJENNINGS SPV NO. 20 PTY LTD

©2012 Gassman Development Perspectives
 All rights reserved. No part of this document may be reproduced or transmitted in any form or by any means, electronic, mechanical, photocopying, recording, or otherwise, without the written permission of Gassman Development Perspectives.

Scale at A1: 1:250
 Date: 04-02-22
 Surveyed: TH
 Drawn: SC
 Checked: AG

Drawing Title: AS CONSTRUCTED PLAN
 STAGE 2B - SEWER
 SHEET 3 OF 3
 Drawing No: 5544-250-STG 2B SEWER
 Revision No: A



JOINT TO SHEET 2

Consulting Engineer's Certification
 I, hereby certify that the As Constructed information shown on this plan is a true and correct record of the sizes, types, materials, classes etc., and it corresponds with the relevant approved Engineering Drawings.
 Signed: RPEQ No. 16939 Dated: 04-02-2022

Registered Surveyor's Certification
 I, Anthony GERAGHTY, hereby certify that the horizontal and vertical locations, and dimensions shown on this plan are a true and correct record of the As Constructed information.
 Signed: Reg. No. 1718 Dated: 04-02-2022

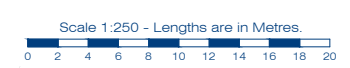
WATERMAIN FITTINGS

No.	ITEM
1	100# Stop Valve
2	100#x100 Hydrant
3	100x100# Tee
4	100#x11.25' Bend
5	100#x22.5' Bend
6	100#x45' Bend
7	100# Endcap
8	100#x90' bend

NOTES
 ALL WATERMAINS 100# uPVC-m PN16 u.n.o.
 ALL WATERMAINS ROAD CROSSINGS 100# DICL CLASS 9
 0.9m COVER UNDER ROAD

FEATURE LEGEND

- WATER FIRE HYDRANT
- ┣ WATER TEE
- ┣ WATER SLUICE VALVE
- WATER BEND
- WATER ENDCAP
- WATER PIPE
- WATER DICL
- WATER CONDUIT
- > REDUCER
- EXISTING WATER PIPE
- EXISTING WATER DICL
- EXISTING WATER FIRE HYDRANT
- ┣ EXISTING WATER TEE
- ┣ EXISTING WATER SLUICE VALVE
- EXISTING WATER BEND
- △ EXISTING WATER READY TAP



est. 1985
 planning | environment | landscape | engineering | survey
 T: 3807 3333 | F: 3287 5461 | www.gassman.com.au
 Gold Coast & Logan | 176 Business Street, Yatala QLD | PO Box 392, Beenleigh 4207

Issue	Date	Description	DRN	CHK
A	28/01/2022	ASCON ISSUE	SC	AG
-	23/11/2021	ORIGINAL ISSUE	SC	AG

Project: **RIVERTON STAGE 2B
JIMBOOMBA**

Client: **AVJENNINGS SPV NO. 20 PTY LTD**

©2012 Gassman Development Perspectives
 All rights reserved. No part of this document may be reproduced or transmitted in any form or by any means, electronic, mechanical, photocopying, recording, or otherwise, without the written permission of Gassman Development Perspectives.

Scale at A1: **1:250**

Date: **04-02-22**

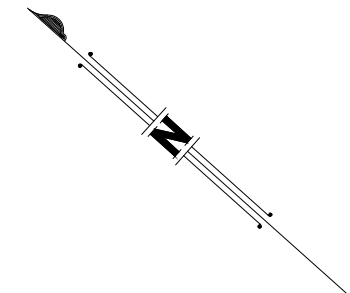
Surveyed: **TH**

Drawn: **SC**

Checked: **AG**

Drawing Title: **AS CONSTRUCTED PLAN
STAGE 2B - WATER
SHEET 1 OF 3**

Drawing No.: **5544-250-STG 2B WATER** Revision No.: **A**



- FEATURE LEGEND**
- WATER FIRE HYDRANT
 - ┴ WATER TEE
 - ┴ WATER SLUICE VALVE
 - WATER BEND
 - WATER ENDCAP
 - WATER PIPE
 - WATER DICL
 - WATER CONDUIT
 - REDUCER
 - EXISTING WATER PIPE
 - EXISTING WATER DICL
 - EXISTING WATER FIRE HYDRANT
 - ┴ EXISTING WATER TEE
 - ┴ EXISTING WATER SLUICE VALVE
 - EXISTING WATER BEND
 - EXISTING WATER ENDCAP
 - △ EXISTING WATER READY TAP

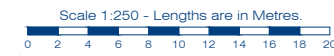
WATERMAIN FITTINGS

No.	ITEM
1	100ø Stop Valve
2	100øx100 Hydrant
3	100x100ø Tee
4	100øx11.25" Bend
5	100øx22.5" Bend
6	100øx45" Bend
7	100ø Endcap
8	100øx90" bend

NOTES
 ALL WATERMANS 100ø uPVC-m PN16 u.n.o.
 ALL WATERMANS ROAD CROSSINGS 100ø DICL CLASS 9
 0.9m COVER UNDER ROAD

Consulting Engineer's Certification
 I,.....hereby certify that the As Constructed information shown on this plan is a true and correct record of the sizes, types, materials, classes etc., and it corresponds with the relevant approved Engineering Drawings.
 Signed..... RPEQ No. 16939 Dated..... 04-02-2022

Registered Surveyor's Certification
 I, Anthony GERAGHTY, hereby certify that the horizontal and vertical locations, and dimensions shown on this plan are a true and correct record of the As Constructed information.
 Signed..... Reg. No. 1718 Dated..... 04-02-2022



JOINT FROM SHEET 1

JOINT FROM SHEET 3

gassman development perspectives
 est 1985
 planning | environment | landscape | engineering | survey
 T: 3807 3333 | F: 3287 5461 | www.gassman.com.au
 Gold Coast & Logan | 176 Business Street, Yatala QLD | PO Box 392, Beenleigh 4207

Issue	Date	Description	DRN	CHK
A	28/01/2022	ASCON ISSUE	SC	AG
-	23/11/2021	ORIGINAL ISSUE	SC	AG

Project: **RIVERTON STAGE 2B JIMBOOMBA**

Client: **AVJENNINGS SPV NO. 20 PTY LTD**

©2012 Gassman Development Perspectives
 All rights reserved. No part of this document may be reproduced or transmitted in any form or by any means, electronic, mechanical, photocopying, recording, or otherwise, without the written permission of Gassman Development Perspectives.

Scale at A1: **1:250**

Date: **04-02-22**

Surveyed: **TH**

Drawn: **SC**

Checked: **AG**

Drawing Title: **AS CONSTRUCTED PLAN STAGE 2B - WATER SHEET 2 OF 3**

Drawing No: **5544-250-STG 2B WATER** Revision No: **A**

JOINT FROM SHEET 2

JOINT FROM SHEET 2



FEATURE LEGEND

- WATER FIRE HYDRANT
- T WATER TEE
- WATER SLUICE VALVE
- WATER BEND
- WATER ENDCAP
- WATER PIPE
- WATER DICL
- WATER CONDUIT
- > REDUCER
- EXISTING WATER PIPE
- EXISTING WATER DICL
- EXISTING WATER FIRE HYDRANT
- T EXISTING WATER TEE
- EXISTING WATER SLUICE VALVE
- EXISTING WATER BEND
- △ EXISTING WATER READY TAP

WATERMAIN FITTINGS

No.	ITEM
1	100ø Stop Valve
2	100øx100 Hydrant
3	100x100ø Tee
4	100øx11.25' Bend
5	100øx22.5' Bend
6	100øx45' Bend
7	100ø Endcap
8	100øx90' bend

Consulting Engineer's Certification

I,.....hereby certify that the As Constructed information shown on this plan is a true and correct record of the sizes, types, materials, classes etc., and it corresponds with the relevant approved Engineering Drawings.

Signed..... RPEQ No. 16939 Dated..... 04-02-2022

Registered Surveyor's Certification

I, Anthony GERAGHTY, hereby certify that the horizontal and vertical locations, and dimensions shown on this plan are a true and correct record of the As Constructed information.

Signed..... Reg. No. 1718 Dated..... 04-02-2022

NOTES

ALL WATERMANS 100ø uPVC-m PN16 u.n.o.
ALL WATERMANS ROAD CROSSINGS 100ø DICL CLASS 9
0.9m COVER UNDER ROAD

Scale 1:250 - Lengths are in Metres.



planning | environment | landscape | engineering | survey
T: 3807 3333 | F: 3287 5461 | www.gassman.com.au
Gold Coast & Logan | 176 Business Street, Yatala QLD | PO Box 392, Beenleigh 4207

Issue	Date	Description	DRN	CHK
A	28/01/2022	ASCON ISSUE	SC	AG
-	23/11/2021	ORIGINAL ISSUE	SC	AG

Project: **RIVERTON STAGE 2B**
JIMBOOMBA

Client: **AVJENNINGS SPV NO. 20 PTY LTD**

©2012 Gassman Development Perspectives
All rights reserved. No part of this document may be reproduced or transmitted in any form or by any means, electronic, mechanical, photocopying, recording, or otherwise, without the written permission of Gassman Development Perspectives.

Scale at A1: **1:250**
Date: **04-02-22**
Surveyed: **TH**
Drawn: **SC**
Checked: **AG**

Drawing Title: **AS CONSTRUCTED PLAN**
STAGE 2B - WATER
SHEET 3 OF 3

Drawing No: **5544-250-STG 2B WATER** Revision No: **A**