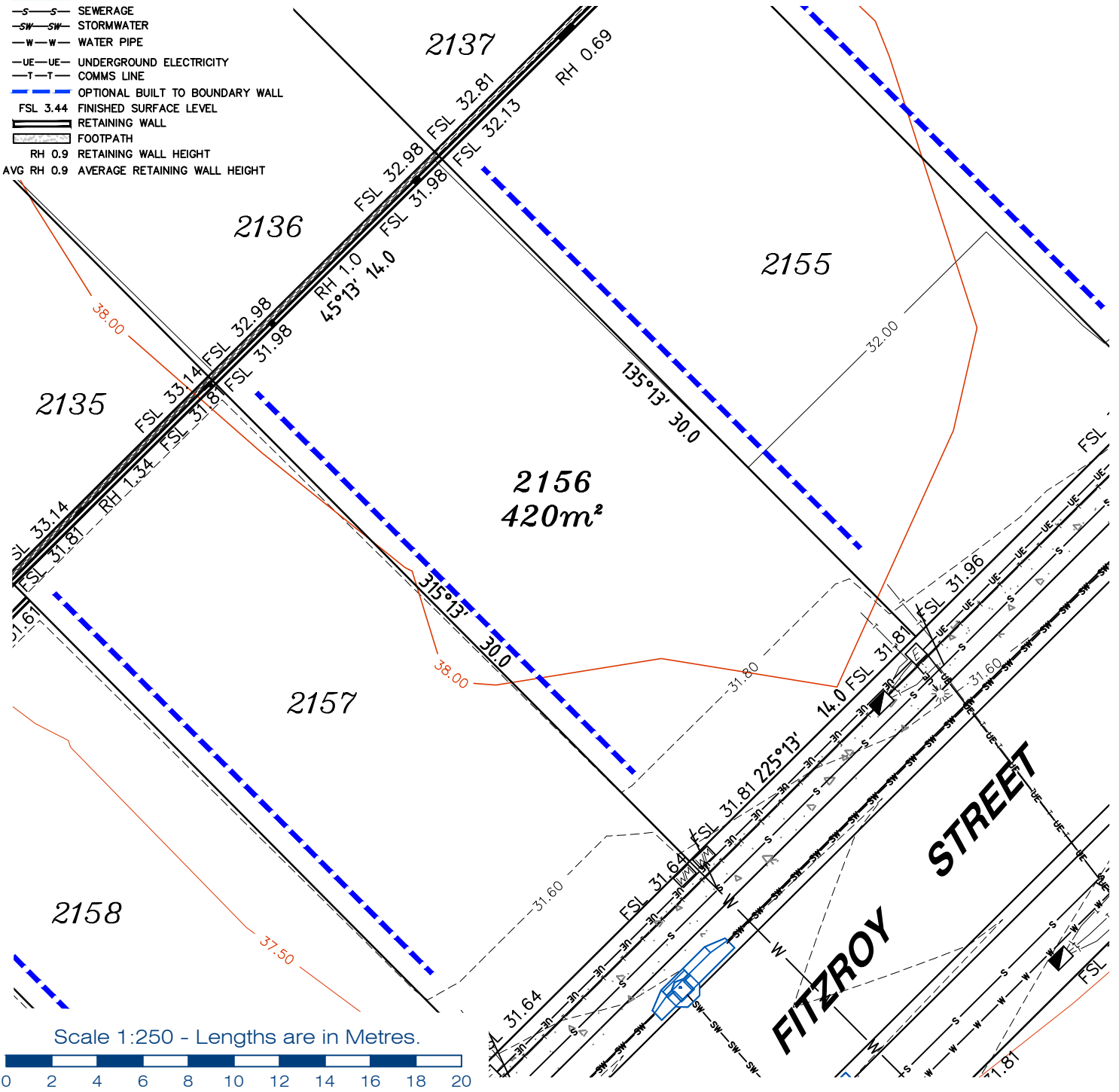


LEGEND

- . . SEWER MANHOLE
- ⊗ . . SEWER MAINTENANCE SHAFT
- ⊙ . . SEWER RODDING END
- ⊕ . . STORMWATER MANHOLE
- ⊕ . . GULLY TRAP
- ⊕ . . WATER METER
- ⊕ . . FIRE HYDRANT
- ⊕ . . STOP VALVE
- ⊕ . . ELECTRICITY PILLAR
- ⊕ . . COMMS PIT
- ⊕ . . RING MAIN UNIT
- ⊕ . . LIGHT POLE
- . . DESIGN CONTOURS
- . . EXISTING SURFACE CONTOURS
- . . DESIGN FILL
- S—S SEWERAGE
- SW—SW STORMWATER
- W—W WATER PIPE
- UE—UE UNDERGROUND ELECTRICITY
- T—T COMMS LINE
- . . OPTIONAL BUILT TO BOUNDARY WALL
- FSL 3.44 FINISHED SURFACE LEVEL
- . . RETAINING WALL
- . . FOOTPATH
- RH 0.9 RETAINING WALL HEIGHT
- AVG RH 0.9 AVERAGE RETAINING WALL HEIGHT

- Notes:**
- Final areas are subject to design changes, Council approval and field survey and may differ from those shown on this Disclosure Plan.
 - Final presentation of areas will comply with requirements of the Registrar of Titles and may vary from the format on this Disclosure Plan
 - "The Seller is entitled to make a Permitted Variation (as defined in Special Condition 3 of the contract) to the lot including its location, area, size, dimensions and elevation".
 - Design contours are approximate only and may change during construction
 - Services have been plotted from design information only and may change during construction
 - All earthworks fill to lots has been placed and compacted on Level 1 basis in accordance with Australian Standard AS3798-2007 "Guidelines on earthworks for commercial and residential developments".



Client	AVJENNINGS Pty Ltd
Project	DISCLOSURE PLAN LOT 2156 (Survey plan: SP280869) RIVERTON Cusack Lane, Jimboomba

Locality	JIMBOOMBA	Issue Date	16/03/2022
Local Govt	LOGAN CITY COUNCIL	Meridian	SP280865
Scale (on A4 original)	1:250	Level Datum	AHD
		Contour Interval	0.2 m Design 0.5m Existing
		Drawn	S.Chowdhury
		Date Drafted	20/08/2021
		Checked	A.Geraghty

Real Property Description:
Lot 701 on SP280865

REFERENCE No. 5544-2C
PLAN No. 5544 S DC LOT 2156A

LEGEND

- . . SEWER MANHOLE
- . . SEWER MAINTENANCE SHAFT
- . . SEWER RODDING END
- . . STORMWATER MANHOLE
- . . GULLY TRAP
- . . WATER METER
- . . FIRE HYDRANT
- . . STOP VALVE
- . . ELECTRICITY PILLAR

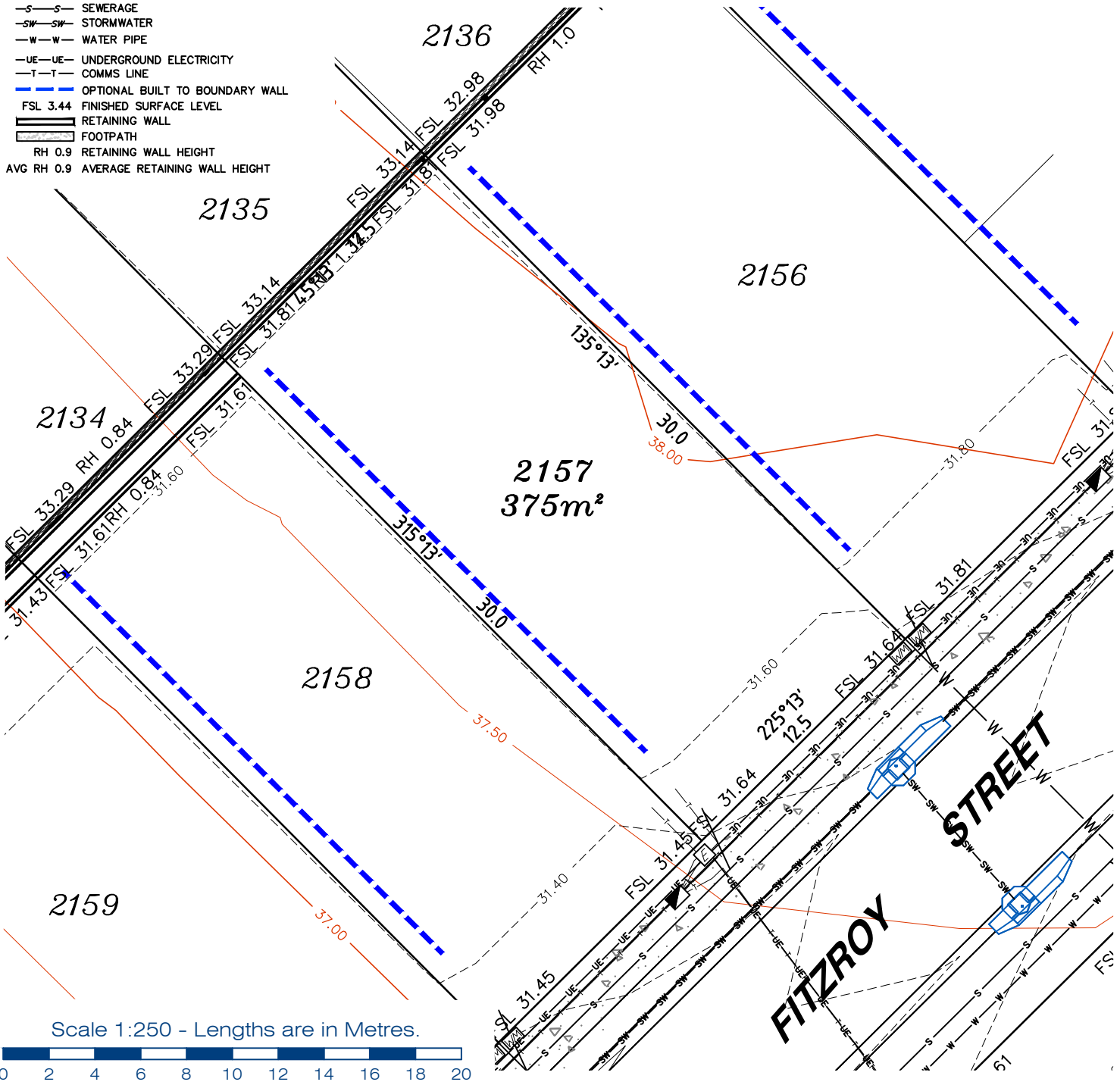
- . . COMMS PIT
- . . RING MAIN UNIT
- . . LIGHT POLE

- DESIGN CONTOURS
- EXISTING SURFACE CONTOURS

- DESIGN FILL
- S-S SEWERAGE
- SW-SW STORMWATER
- W-W WATER PIPE
- UE-UE UNDERGROUND ELECTRICITY
- T-T COMMS LINE
- OPTIONAL BUILT TO BOUNDARY WALL
- FSL 3.44 FINISHED SURFACE LEVEL
- RETAINING WALL
- FOOTPATH
- RH 0.9 RETAINING WALL HEIGHT
- AVG RH 0.9 AVERAGE RETAINING WALL HEIGHT

Notes:

- Final areas are subject to design changes, Council approval and field survey and may differ from those shown on this Disclosure Plan.
- Final presentation of areas will comply with requirements of the Registrar of Titles and may vary from the format on this Disclosure Plan
- "The Seller is entitled to make a Permitted Variation (as defined in Special Condition 3 of the contract) to the lot including its location, area, size, dimensions and elevation".
- Design contours are approximate only and may change during construction
- Services have been plotted from design information only and may change during construction
- All earthworks fill to lots has been placed and compacted on Level 1 basis in accordance with Australian Standard AS3798-2007 "Guidelines on earthworks for commercial and residential developments".



gassman development perspectives
 est 1985
 planning | environment | landscape | engineering | survey
 T: 3807 3333 | F: 3287 5461 | www.gassman.com.au
 LOGAN & Logan | 176 Business Street, Yatala QLD | PO Box 392, Beenleigh 4207

Client	AVJENNINGS Pty Ltd
Project	DISCLOSURE PLAN LOT 2157 (Survey plan: SP280869) RIVERTON Cusack Lane, Jimboomba

Locality	JIMBOOMBA	Issue Date	16/03/2021
Local Govt	LOGAN CITY COUNCIL	Meridian	SP280865
Scale (on A4 original)	1:250	Level Datum	AHD
		Contour Interval	0.2 m Design 0.5m Existing
		Drawn	S.Chowdhury
		Date Drafted	20/08/2021
		Checked	A.Geraghty

Real Property Description:
 Lot 701 on SP280865

REFERENCE No. 5544-2C
PLAN No. 5544 S DC LOT 2157A



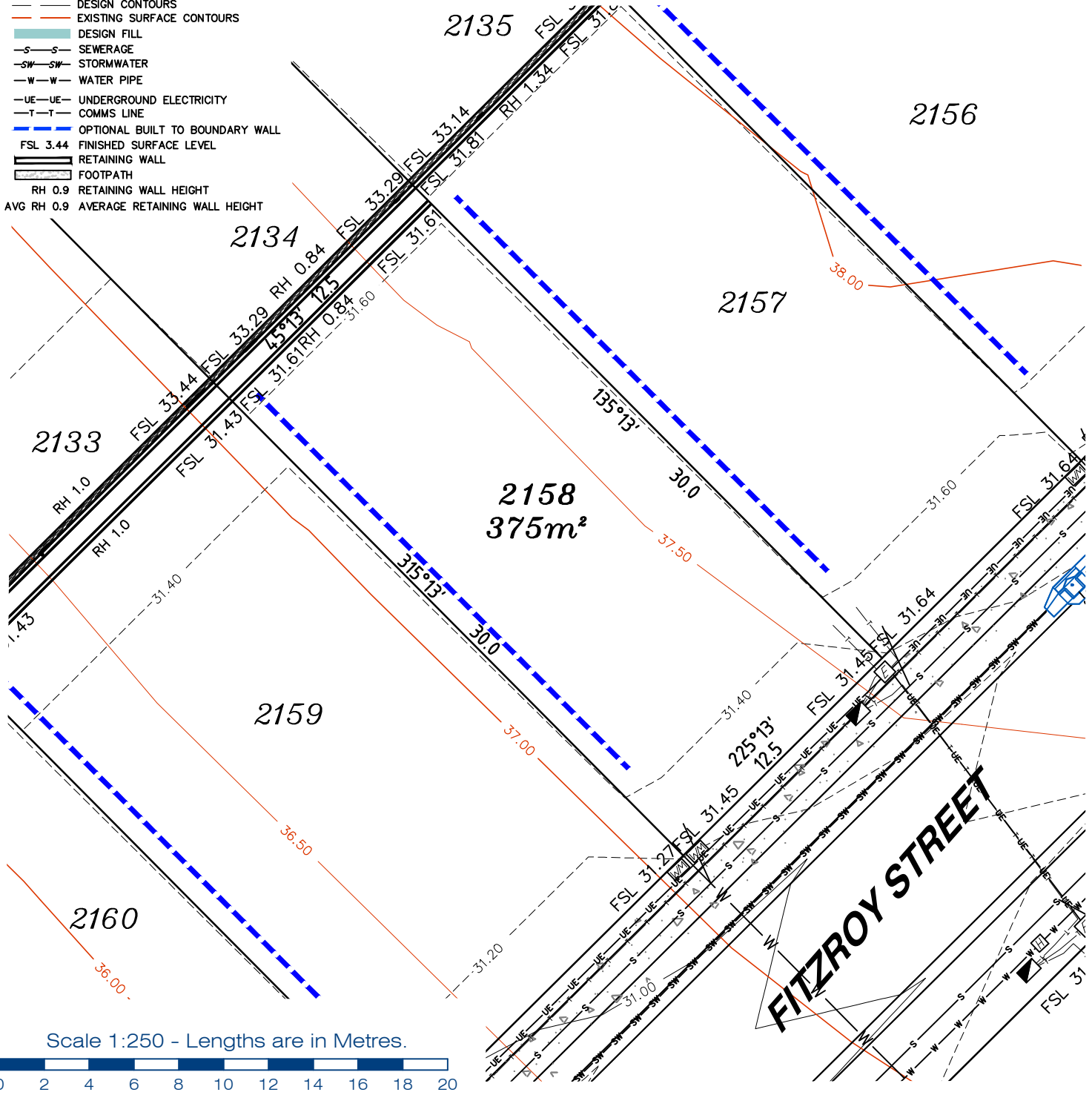
LEGEND

- . . SEWER MANHOLE
- . . SEWER MAINTENANCE SHAFT
- . . SEWER RODDING END
- . . STORMWATER MANHOLE
- . . GULLY TRAP
- . . WATER METER
- . . FIRE HYDRANT
- . . STOP VALVE
- . . ELECTRICITY PILLAR

- . . COMMS PIT
- . . RING MAIN UNIT
- . . LIGHT POLE
- DESIGN CONTOURS
- EXISTING SURFACE CONTOURS
- DESIGN FILL
- SEWERAGE
- STORMWATER
- WATER PIPE
- UNDERGROUND ELECTRICITY
- COMMS LINE
- OPTIONAL BUILT TO BOUNDARY WALL
- FINISHED SURFACE LEVEL
- RETAINING WALL
- FOOTPATH
- RETAINING WALL HEIGHT
- AVERAGE RETAINING WALL HEIGHT

Notes:

- Final areas are subject to design changes, Council approval and field survey and may differ from those shown on this Disclosure Plan.
- Final presentation of areas will comply with requirements of the Registrar of Titles and may vary from the format on this Disclosure Plan
- "The Seller is entitled to make a Permitted Variation (as defined in Special Condition 3 of the contract) to the lot including its location, area, size, dimensions and elevation".
- Design contours are approximate only and may change during construction
- Services have been plotted from design information only and may change during construction
- All earthworks fill to lots has been placed and compacted on Level 1 basis in accordance with Australian Standard AS3798-2007 "Guidelines on earthworks for commercial and residential developments".



Client	AVJENNINGS Pty Ltd
Project	DISCLOSURE PLAN LOT 2158 (Survey plan: SP280869) RIVERTON Cusack Lane, Jimboomba

Locality	JIMBOOMBA	Issue Date	16/03/2022
Local Govt	LOGAN CITY COUNCIL	Meridian	SP280865
Scale (on A4 original)	1:250	Level Datum	AHD
		Contour Interval	0.2 m Design 0.5m Existing
		Drawn	S.Chowdhury
		Date Drafted	20/08/2021
		Checked	A.Geraghty

Real Property Description:
Lot 701 on SP280865

REFERENCE No. **5544-2C**
PLAN No. **5544 S DC LOT 2158A**

gassman development perspectives
est 1985
planning | environment | landscape | engineering | survey
T: 3807 3333 | F: 3287 5461 | www.gassman.com.au
LOGAN & Logan | 176 Business Street, Yatala QLD | PO Box 392, Beenleigh 4207

LEGEND

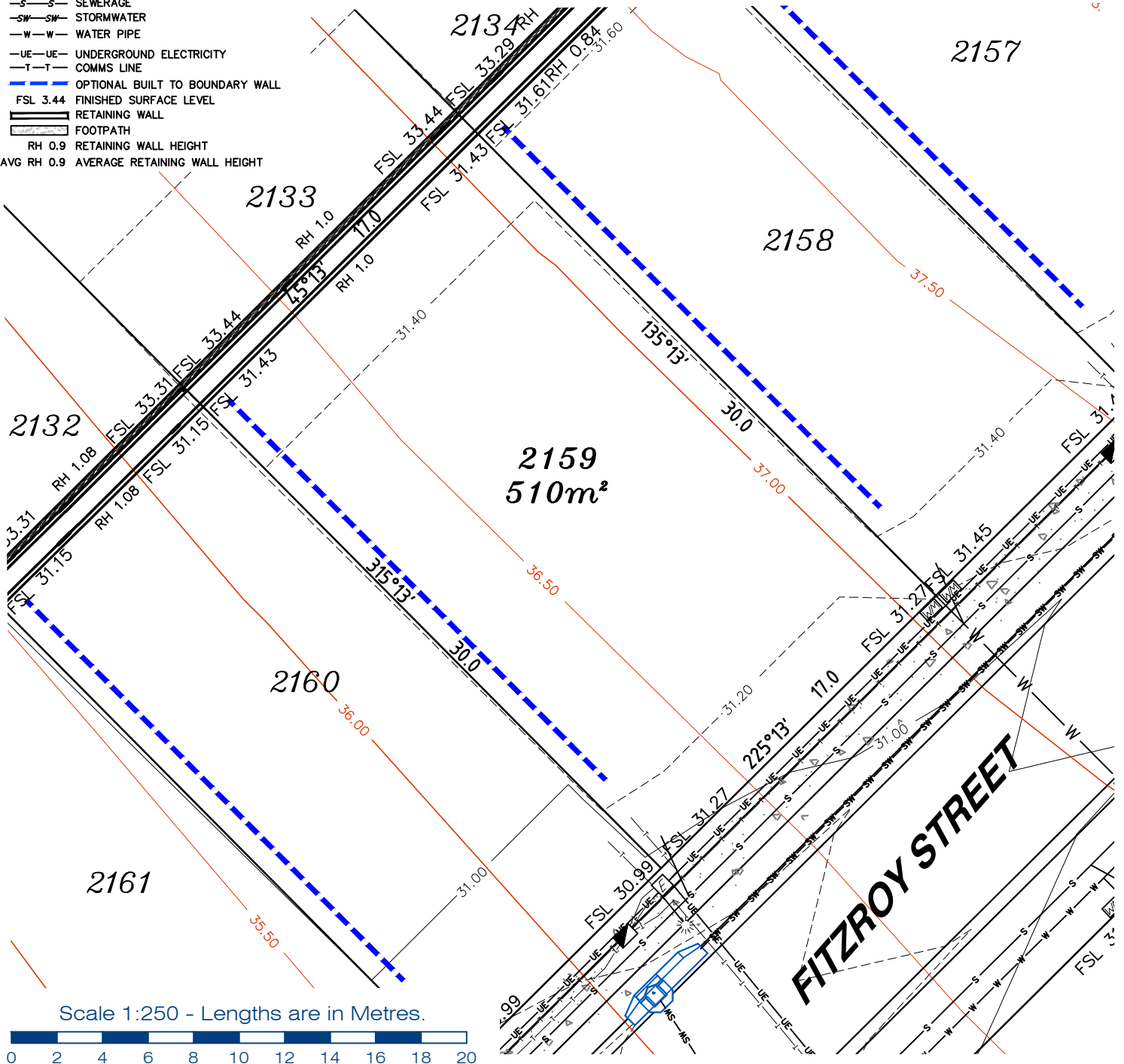
- . . . SEWER MANHOLE
- ⊗ . . . SEWER MAINTENANCE SHAFT
- ⊙ . . . SEWER RODDING END
- ⊕ . . . STORMWATER MANHOLE
- ⊗ . . . GULLY TRAP
- ⊙ . . . WATER METER
- ⊕ . . . FIRE HYDRANT
- ⊗ . . . STOP VALVE
- ⊕ . . . ELECTRICITY PILLAR

- ⊕ . . . COMMS PIT
- ⊕ . . . RING MAIN UNIT
- ⊕ . . . LIGHT POLE
- ⊕ . . . DESIGN CONTOURS
- ⊕ . . . EXISTING SURFACE CONTOURS
- ⊕ . . . DESIGN FILL
- S—S— SEWERAGE
- SW—SW— STORMWATER
- W—W— WATER PIPE
- UE—UE— UNDERGROUND ELECTRICITY
- T—T— COMMS LINE

- . . . OPTIONAL BUILT TO BOUNDARY WALL
- FSL 3.44 FINISHED SURFACE LEVEL
- ⊕ . . . RETAINING WALL
- ⊕ . . . FOOTPATH
- RH 0.9 RETAINING WALL HEIGHT
- AVG RH 0.9 AVERAGE RETAINING WALL HEIGHT

Notes:

- Final areas are subject to design changes, Council approval and field survey and may differ from those shown on this Disclosure Plan.
- Final presentation of areas will comply with requirements of the Registrar of Titles and may vary from the format on this Disclosure Plan
- "The Seller is entitled to make a Permitted Variation (as defined in Special Condition 3 of the contract) to the lot including its location, area, size, dimensions and elevation".
- Design contours are approximate only and may change during construction
- Services have been plotted from design information only and may change during construction
- All earthworks fill to lots has been placed and compacted on Level 1 basis in accordance with Australian Standard AS3798-2007 "Guidelines on earthworks for commercial and residential developments".



planning | environment | landscape | engineering | survey
 T: 3807 3333 | F: 3287 5461 | www.gassman.com.au
 LOGAN & Logan | 76 Business Street, Yatala QLD | PO Box 392, Beenleigh 4207

Client
 AVJENNINGS Pty Ltd

Project
DISCLOSURE PLAN
LOT 2159
 (Survey plan: SP280869)
RIVERTON
 Cusack Lane, Jimboomba

Locality JIMBOOMBA
Local Govt LOGAN CITY COUNCIL
Scale (on A4 original)
 1:250

Issue Date 16/03/2022
Meridian SP280865
Level Datum AHD
Contour Interval 0.2 m Design
 0.5m Existing
Drawn S.Chowdhury
Date Drafted 10/08/2021
Checked A.Geraghty

Real Property Description:
 Lot 701 on SP280865

REFERENCE No. 5544-2C
PLAN No. 5544 S DC LOT 2159A

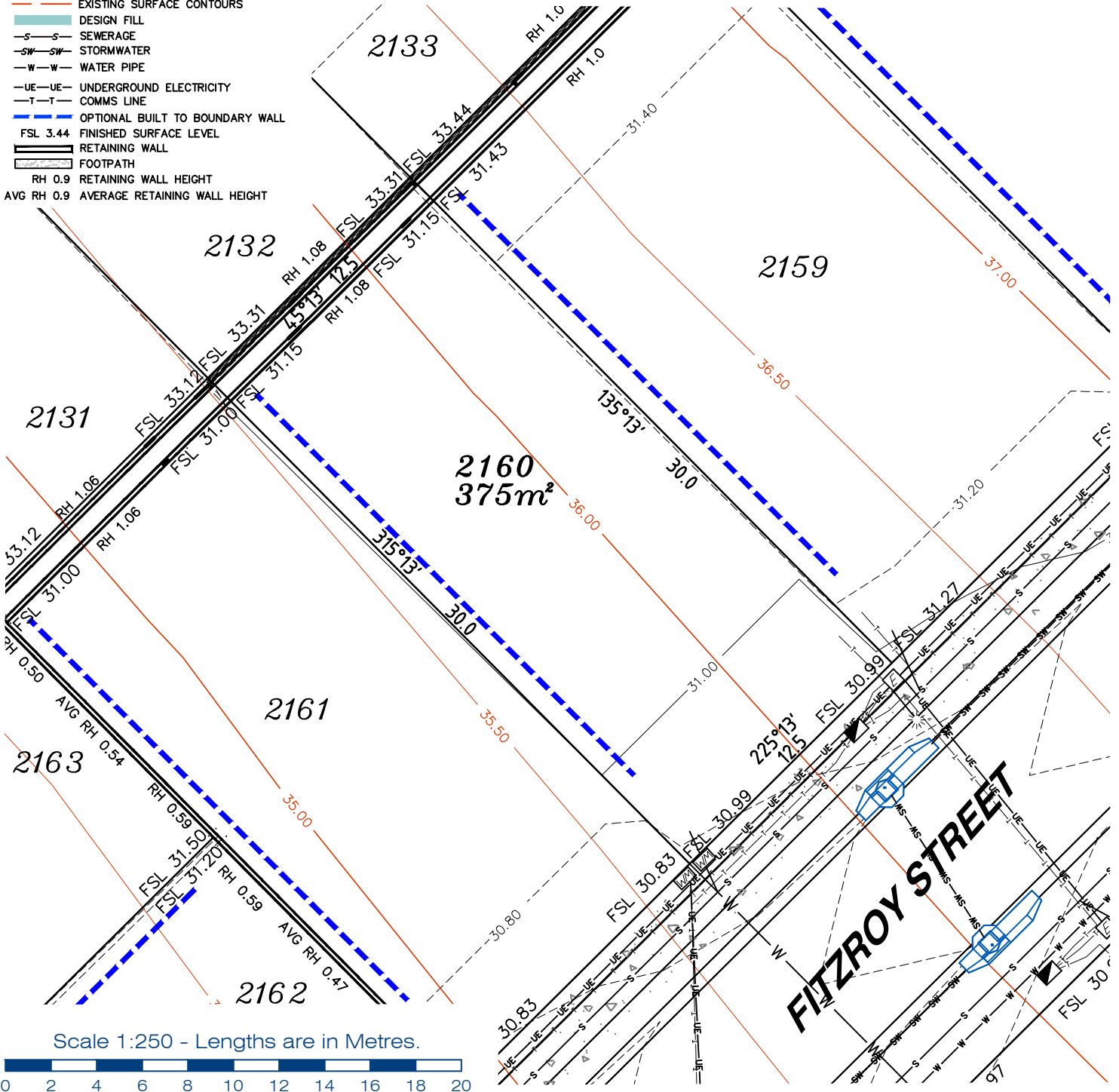


LEGEND

- ⊙ . . . SEWER MANHOLE
- ⊕ . . . SEWER MAINTENANCE SHAFT
- ⊖ . . . SEWER RODDING END
- ⊗ . . . STORMWATER MANHOLE
- ⊘ . . . GULLY TRAP
- ⊙ . . . WATER METER
- ⊕ . . . FIRE HYDRANT
- ⊖ . . . STOP VALVE
- ⊗ . . . ELECTRICITY PILLAR
- ⊘ . . . COMMS PIT
- ⊙ . . . RING MAIN UNIT
- ⊕ . . . LIGHT POLE
- . . . DESIGN CONTOURS
- . . . EXISTING SURFACE CONTOURS
- . . . DESIGN FILL
- . . . SEWERAGE
- . . . STORMWATER
- . . . WATER PIPE
- . . . UNDERGROUND ELECTRICITY
- . . . COMMS LINE
- . . . OPTIONAL BUILT TO BOUNDARY WALL
- . . . FINISHED SURFACE LEVEL
- . . . RETAINING WALL
- . . . FOOTPATH
- RH 0.9 RETAINING WALL HEIGHT
- AVG RH 0.9 AVERAGE RETAINING WALL HEIGHT

Notes:

- Final areas are subject to design changes, Council approval and field survey and may differ from those shown on this Disclosure Plan.
- Final presentation of areas will comply with requirements of the Registrar of Titles and may vary from the format on this Disclosure Plan
- "The Seller is entitled to make a Permitted Variation (as defined in Special Condition 3 of the contract) to the lot including its location, area, size, dimensions and elevation".
- Design contours are approximate only and may change during construction
- Services have been plotted from design information only and may change during construction
- All earthworks fill to lots has been placed and compacted on Level 1 basis in accordance with Australian Standard AS3798-2007 "Guidelines on earthworks for commercial and residential developments".



gassman development perspectives
 est 1985
 planning | environment | landscape | engineering | survey
 T: 3807 3333 | F: 3287 5461 | www.gassman.com.au
 LOGAN & Logan | 176 Business Street, Yatala QLD | PO Box 392, Beenleigh 4207

Client	AVJENNINGS Pty Ltd
Project	DISCLOSURE PLAN LOT 2160 (Survey plan: SP280869) RIVERTON Cusack Lane, Jimboomba

Locality	JIMBOOMBA	Issue Date	16/03/2022
Local Govt	LOGAN CITY COUNCIL	Meridian	SP280865
Scale (on A4 original)	1:250	Level Datum	AHD
		Contour Interval	0.2 m Design 0.5m Existing
		Drawn	S.Chowdhury
		Date Drafted	20/08/2021
		Checked	A.Geraghty

Real Property Description:
 Lot 701 on SP280865

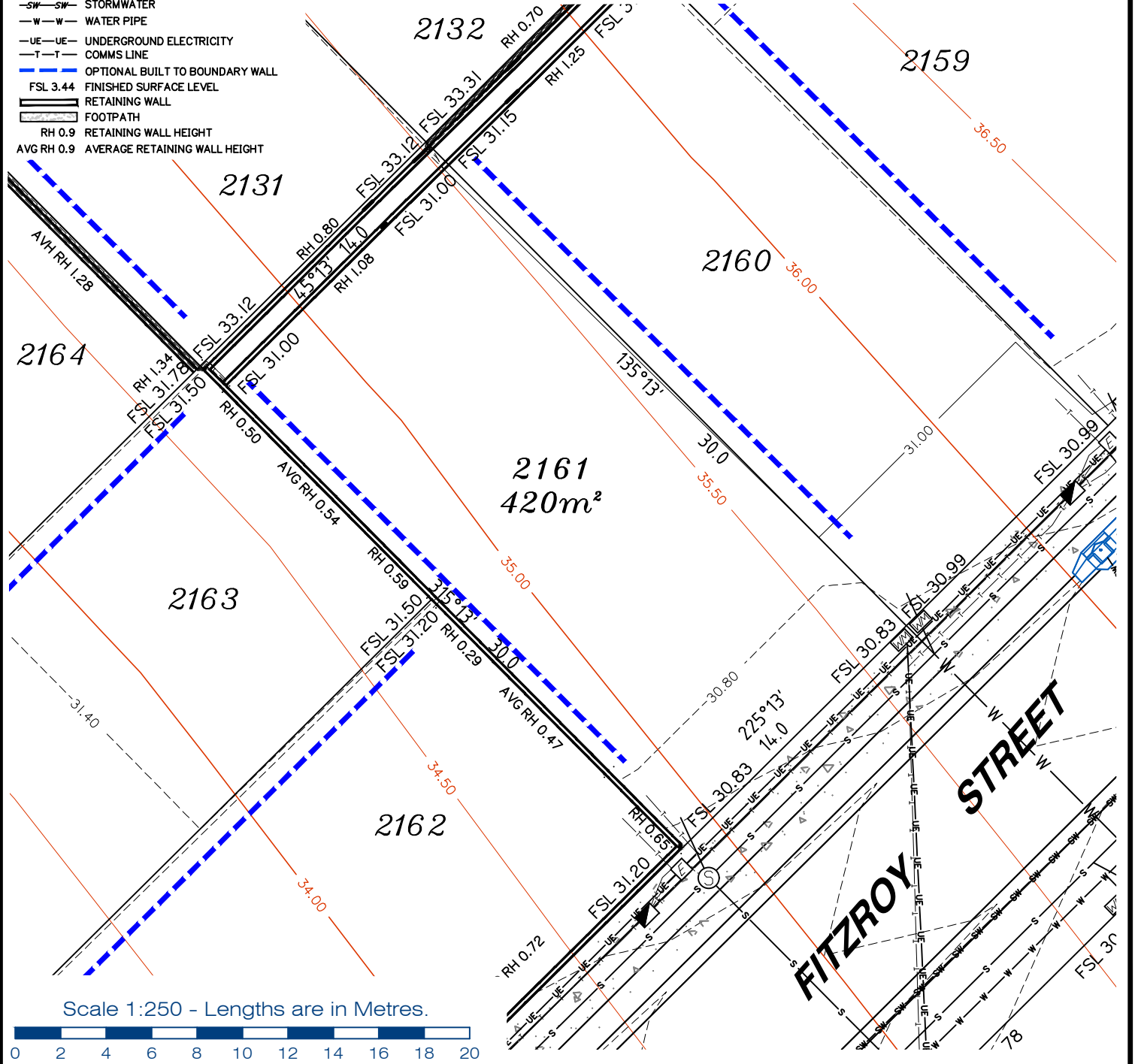
REFERENCE No. 5544-2C
PLAN No. 5544 S DC LOT 2160A

LEGEND

- . . . SEWER MANHOLE
- ⊙ . . . SEWER MAINTENANCE SHAFT
- ⊙ . . . SEWER RODDING END
- ⊙ . . . STORMWATER MANHOLE
- ⊙ . . . GULLY TRAP
- ⊙ . . . WATER METER
- ⊙ . . . FIRE HYDRANT
- ⊙ . . . STOP VALVE
- ⊙ . . . ELECTRICITY PILLAR
- ⊙ . . . COMMS PIT
- ⊙ . . . RING MAIN UNIT
- ⊙ . . . LIGHT POLE
- . . . DESIGN CONTOURS
- . . . EXISTING SURFACE CONTOURS
- . . . DESIGN FILL
- S—S— . . . SEWERAGE
- SW—SW— . . . STORMWATER
- W—W— . . . WATER PIPE
- UE—UE— . . . UNDERGROUND ELECTRICITY
- T—T— . . . COMMS LINE
- . . . OPTIONAL BUILT TO BOUNDARY WALL
- FSL 3.44 . . . FINISHED SURFACE LEVEL
- . . . RETAINING WALL
- . . . FOOTPATH
- RH 0.9 . . . RETAINING WALL HEIGHT
- AVG RH 0.9 . . . AVERAGE RETAINING WALL HEIGHT

Notes:

- Final areas are subject to design changes, Council approval and field survey and may differ from those shown on this Disclosure Plan.
- Final presentation of areas will comply with requirements of the Registrar of Titles and may vary from the format on this Disclosure Plan
- "The Seller is entitled to make a Permitted Variation (as defined in Special Condition 3 of the contract) to the lot including its location, area, size, dimensions and elevation".
- Design contours are approximate only and may change during construction
- Services have been plotted from design information only and may change during construction
- All earthworks fill to lots has been placed and compacted on Level 1 basis in accordance with Australian Standard AS3798-2007 "Guidelines on earthworks for commercial and residential developments".



gassman development perspectives
 est 1985
 planning | environment | landscape | engineering | survey
 T: 3807 3333 | F: 3287 5461 | www.gassman.com.au
 LOGAN & Logan | 76 Business Street, Yatala QLD | PO Box 392, Beenleigh 4207

Client	AVJENNINGS Pty Ltd
Project	DISCLOSURE PLAN LOT 2161 (Survey plan: SP280869) RIVERTON Cusack Lane, Jimboomba

Locality	JIMBOOMBA	Issue Date	22/06/2022
Local Govt	LOGAN CITY COUNCIL	Meridian	SP280865
Scale (on A4 original)	1:250	Level Datum	AHD
		Contour Interval	0.2 m Design 0.5m Existing
		Drawn	S.Chowdhury
		Date Drafted	20/08/2021
		Checked	A.Geraghty

Real Property Description:
 Lot 701 on SP280865

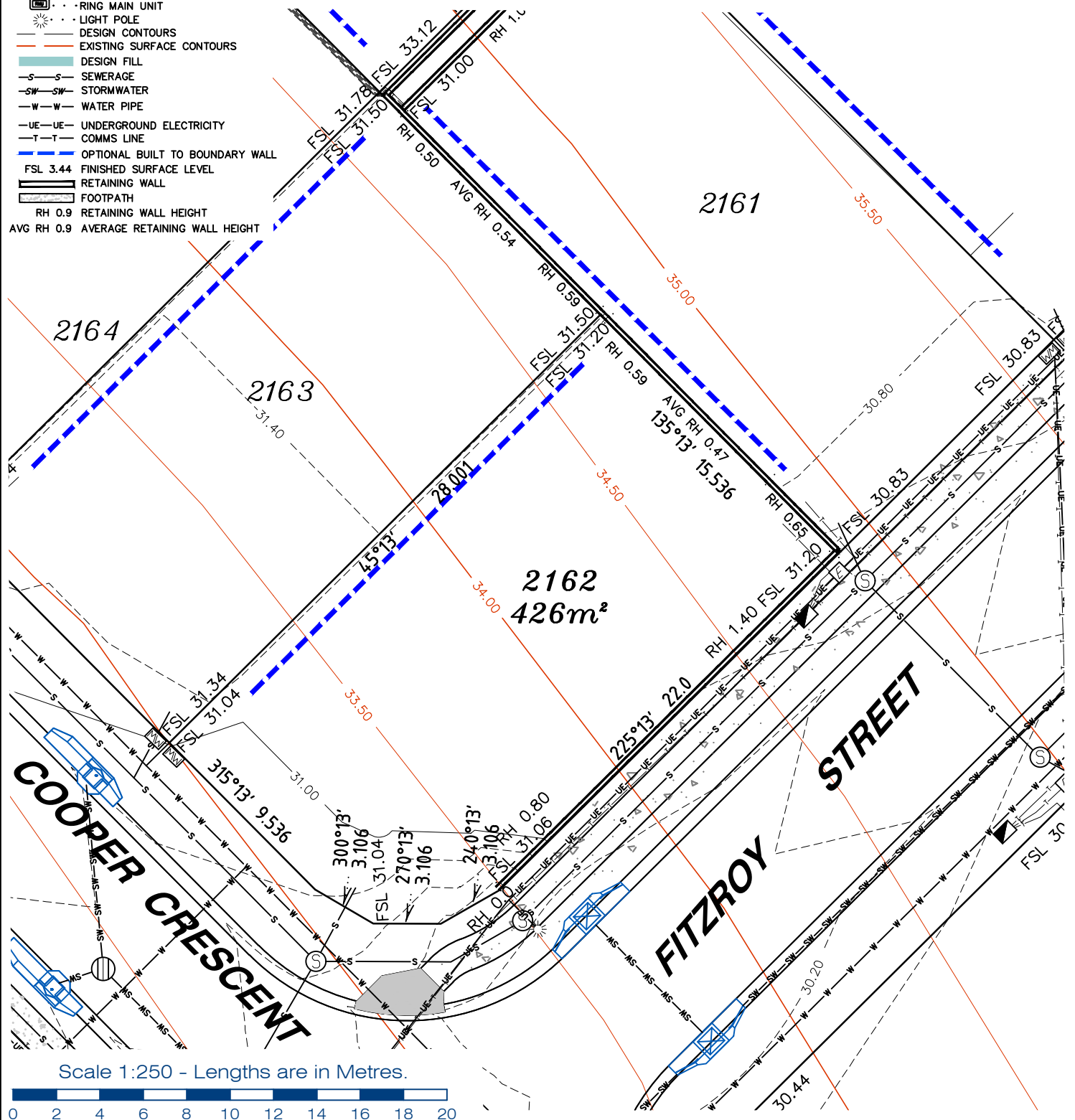
REFERENCE No. 5544-2C
PLAN No. 5544 S DC LOT 2161C

LEGEND

- . . SEWER MANHOLE
- ⊙ . . SEWER MAINTENANCE SHAFT
- ⊙ . . SEWER RODDING END
- ⊙ . . STORMWATER MANHOLE
- ⊙ . . GULLY TRAP
- ⊙ . . WATER METER
- ⊙ . . FIRE HYDRANT
- ⊙ . . STOP VALVE
- ⊙ . . ELECTRICITY PILLAR
- ⊙ . . COMMS PIT
- ⊙ . . RING MAIN UNIT
- ⊙ . . LIGHT POLE
- — — DESIGN CONTOURS
- — — EXISTING SURFACE CONTOURS
- — — DESIGN FILL
- S — S SEWERAGE
- SW — SW STORMWATER
- W — W WATER PIPE
- UE — UE UNDERGROUND ELECTRICITY
- T — T COMMS LINE
- — — OPTIONAL BUILT TO BOUNDARY WALL
- FSL 3.44 FINISHED SURFACE LEVEL
- — — RETAINING WALL
- — — FOOTPATH
- RH 0.9 RETAINING WALL HEIGHT
- AVG RH 0.9 AVERAGE RETAINING WALL HEIGHT

Notes:

- Final areas are subject to design changes, Council approval and field survey and may differ from those shown on this Disclosure Plan.
- Final presentation of areas will comply with requirements of the Registrar of Titles and may vary from the format on this Disclosure Plan
- "The Seller is entitled to make a Permitted Variation (as defined in Special Condition 3 of the contract) to the lot including its location, area, size, dimensions and elevation".
- Design contours are approximate only and may change during construction
- Services have been plotted from design information only and may change during construction
- All earthworks fill to lots has been placed and compacted on Level 1 basis in accordance with Australian Standard AS3798-2007 "Guidelines on earthworks for commercial and residential developments".



Client	AVJENNINGS Pty Ltd
Project	DISCLOSURE PLAN LOT 2162 (Survey plan: SP280869) RIVERTON Cusack Lane, Jimboomba

Locality	JIMBOOMBA	Issue Date	16/03/2021
Local Govt	LOGAN CITY COUNCIL	Meridian	SP280865
Scale (on A4 original)	1:250	Level Datum	AHD
		Contour Interval	0.2 m Design 0.5m Existing
		Drawn	S.Chowdhury
		Date Drafted	20/08/2021
		Checked	A.Geraghty

Real Property Description:
Lot 701 on SP280865

REFERENCE No. **5544-2C**
PLAN No. **5544 S DC LOT 2162A**

