

**NORMANBY WAY
RELEASE**

RIV  RTON
JIMBOOMBA



AVJennings®

NORMANBY WAY RELEASE

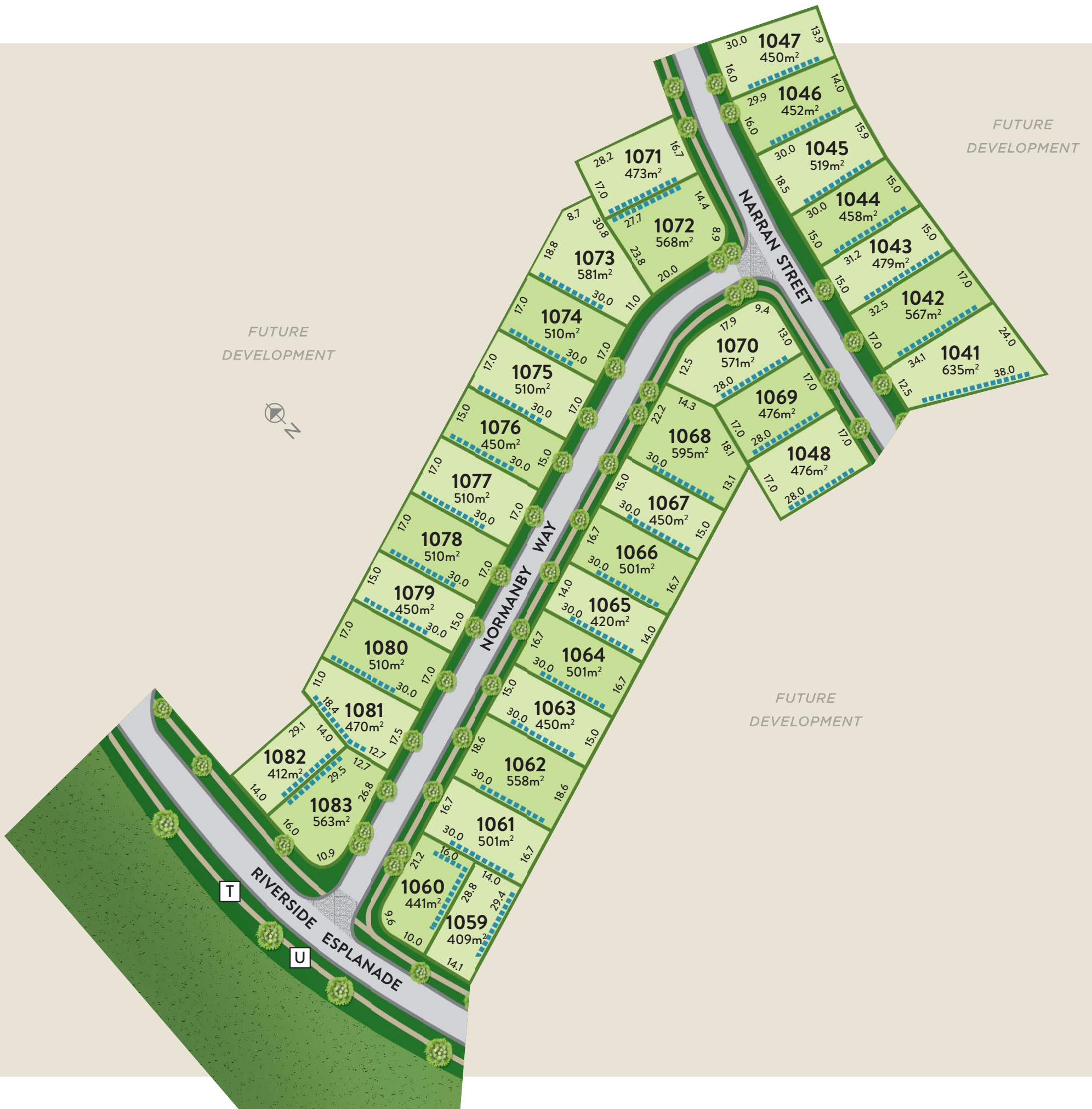
This is the lifestyle opportunity you've been waiting for. The first release at Riverton offers a prime opportunity to be located close to the Logan River where you can enjoy tranquil bushland surrounds.

Close to the river and future parklands, you will enjoy a premium community designed for the way you live today. With a great selection of benched homesites, ranging from 409m² to a generously proportioned 635m², you can choose the perfect homesite to build your dream home.

KEY

-  Build to boundary
-  Underground sewer infrastructure
-  Transformer
-  Footpath
-  Normanby Way release
-  Initial development area





FUTURE DEVELOPMENT



FUTURE DEVELOPMENT

FUTURE DEVELOPMENT

T

U



RIVERTON

JIMBOOMBA

Visit the Riverton Sales & Information Centre
Cusack Lane, Jimboomba

Call **131 878** or visit **avjennings.com.au**

AVJennings[®]

All images which appear in this brochure are indicative and may vary from the final product. All descriptions have been prepared in good faith and with due care however may be subject to change without notice at any time. Check with your builder/council regarding siting and driveway access. All plans are copyright in whole and in part. Purchasers should inform and assure themselves by inspection, independent advice or as otherwise necessary prior to purchase. No liability for negligence or otherwise is assumed by Cusack Lane Development Joint Venture or its related entities. *Registered Trademark AVJennings Properties Limited. ©Cusack Lane Development Joint Venture. ABN: 62 341 764 073. E27427