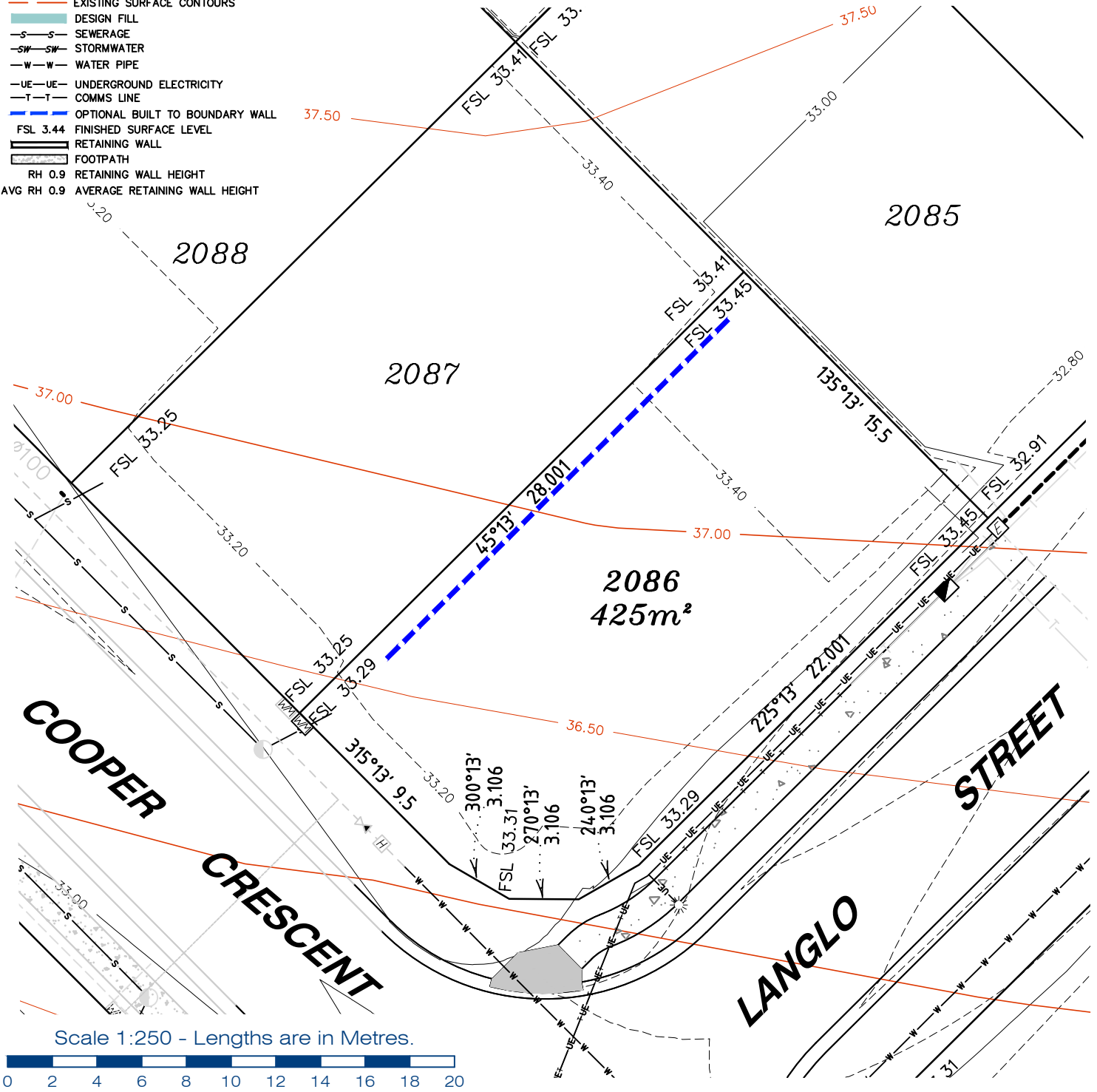


LEGEND

- . . SEWER MANHOLE
- . . SEWER MAINTENANCE SHAFT
- . . SEWER RODDING END
- . . STORMWATER MANHOLE
- . . GULLY TRAP
- . . WATER METER
- . . FIRE HYDRANT
- . . STOP VALVE
- . . ELECTRICITY PILLAR
- . . COMMS PIT
- . . RING MAIN UNIT
- . . LIGHT POLE
- DESIGN CONTOURS
- EXISTING SURFACE CONTOURS
- DESIGN FILL
- SEWERAGE
- SW-SW STORMWATER
- W-W WATER PIPE
- UE-UE UNDERGROUND ELECTRICITY
- T-T COMMS LINE
- OPTIONAL BUILT TO BOUNDARY WALL
- FSL 3.44 FINISHED SURFACE LEVEL
- RETAINING WALL
- FOOTPATH
- RH 0.9 RETAINING WALL HEIGHT
- AVG RH 0.9 AVERAGE RETAINING WALL HEIGHT

Notes:

- Final areas are subject to design changes, Council approval and field survey and may differ from those shown on this Disclosure Plan.
- Final presentation of areas will comply with requirements of the Registrar of Titles and may vary from the format on this Disclosure Plan
- "The Seller is entitled to make a Permitted Variation (as defined in Special Condition 3 of the contract) to the lot including its location, area, size, dimensions and elevation".
- Design contours are approximate only and may change during construction
- Services have been plotted from design information only and may change during construction
- All earthworks fill to lots has been placed and compacted on Level 1 basis in accordance with Australian Standard AS3798-2007 "Guidelines on earthworks for commercial and residential developments".



**gassman
development
perspectives**
est 1985

planning | environment | landscape | engineering | survey

T: 3807 3333 | F: 3287 5461 | www.gassman.com.au

LOGAN & Logan | 76 Business Street, Yatala QLD | PO Box 392, Beenleigh 4207

Client	AVJENNINGS Pty Ltd
Project	DISCLOSURE PLAN LOT 2086 (Survey plan: SP280869) RIVERTON Cusack Lane, Jimboomba

Locality	JIMBOOMBA	Issue Date	16/03/2021
Local Govt	LOGAN CITY COUNCIL	Meridian	SP280865
Scale (on A4 original)	1:250	Level Datum	AHD
		Contour Interval	0.2 m Design 0.5m Existing
		Drawn	S.Chowdhury
		Date Drafted	07/08/2021
		Checked	A.Geraghty

Real Property Description:
Lot 701 on SP280865

REFERENCE No. 5544-2C
PLAN No. 5544 S DC LOT 2086A

LEGEND

- . SEWER MANHOLE
- ⊙ . SEWER MAINTENANCE SHAFT
- ⊕ . SEWER RODDING END
- ⊗ . STORMWATER MANHOLE
- ⊘ . GULLY TRAP
- ⊙ . WATER METER
- ⊙ . FIRE HYDRANT
- ⊙ . STOP VALVE
- ⊙ . ELECTRICITY PILLAR
- ⊙ . COMMS PIT
- ⊙ . RING MAIN UNIT
- ⊙ . LIGHT POLE
- . DESIGN CONTOURS
- . EXISTING SURFACE CONTOURS
- . DESIGN FILL
- S—S . SEWERAGE
- SW—SW . STORMWATER
- W—W . WATER PIPE
- UE—UE . UNDERGROUND ELECTRICITY
- T—T . COMMS LINE
- . OPTIONAL BUILT TO BOUNDARY WALL
- FSL 3.44 . FINISHED SURFACE LEVEL
- . RETAINING WALL
- . FOOTPATH
- RH 0.9 . RETAINING WALL HEIGHT
- AVG RH 0.9 . AVERAGE RETAINING WALL HEIGHT

Notes:

- Final areas are subject to design changes, Council approval and field survey and may differ from those shown on this Disclosure Plan.
- Final presentation of areas will comply with requirements of the Registrar of Titles and may vary from the format on this Disclosure Plan
- "The Seller is entitled to make a Permitted Variation (as defined in Special Condition 3 of the contract) to the lot including its location, area, size, dimensions and elevation".
- Design contours are approximate only and may change during construction
- Services have been plotted from design information only and may change during construction
- All earthworks fill to lots has been placed and compacted on Level 1 basis in accordance with Australian Standard AS3798-2007 "Guidelines on earthworks for commercial and residential developments".



2089

2090

2091
476m²

2095

2096

Scale 1:250 - Lengths are in Metres.



planning | environment | landscape | engineering | survey

T: 3807 3333 | F: 3287 5461 | www.gassman.com.au

LOGAN & Logan | 176 Business Street, Yatala QLD | PO Box 392, Beenleigh 4207

Client

AVJENNINGS Pty Ltd

Project

DISCLOSURE PLAN

LOT 2091

(Survey plan: SP280869)

RIVERTON

Cusack Lane, Jimboomba

Locality JIMBOOMBA
Local Govt LOGAN CITY COUNCIL

Scale (on A4 original)
1:250

Issue Date 16/03/2022
Meridian SP280865
Level Datum AHD
Contour Interval 0.2 m Design
0.5m Existing
Drawn S.Chowdhury
Date Drafted 07/08/2021
Checked A.Geraghty

Real Property Description:

Lot 701 on SP280865

REFERENCE No. **5544-2C**

PLAN No. **5544 S DC LOT 2091A**

LEGEND

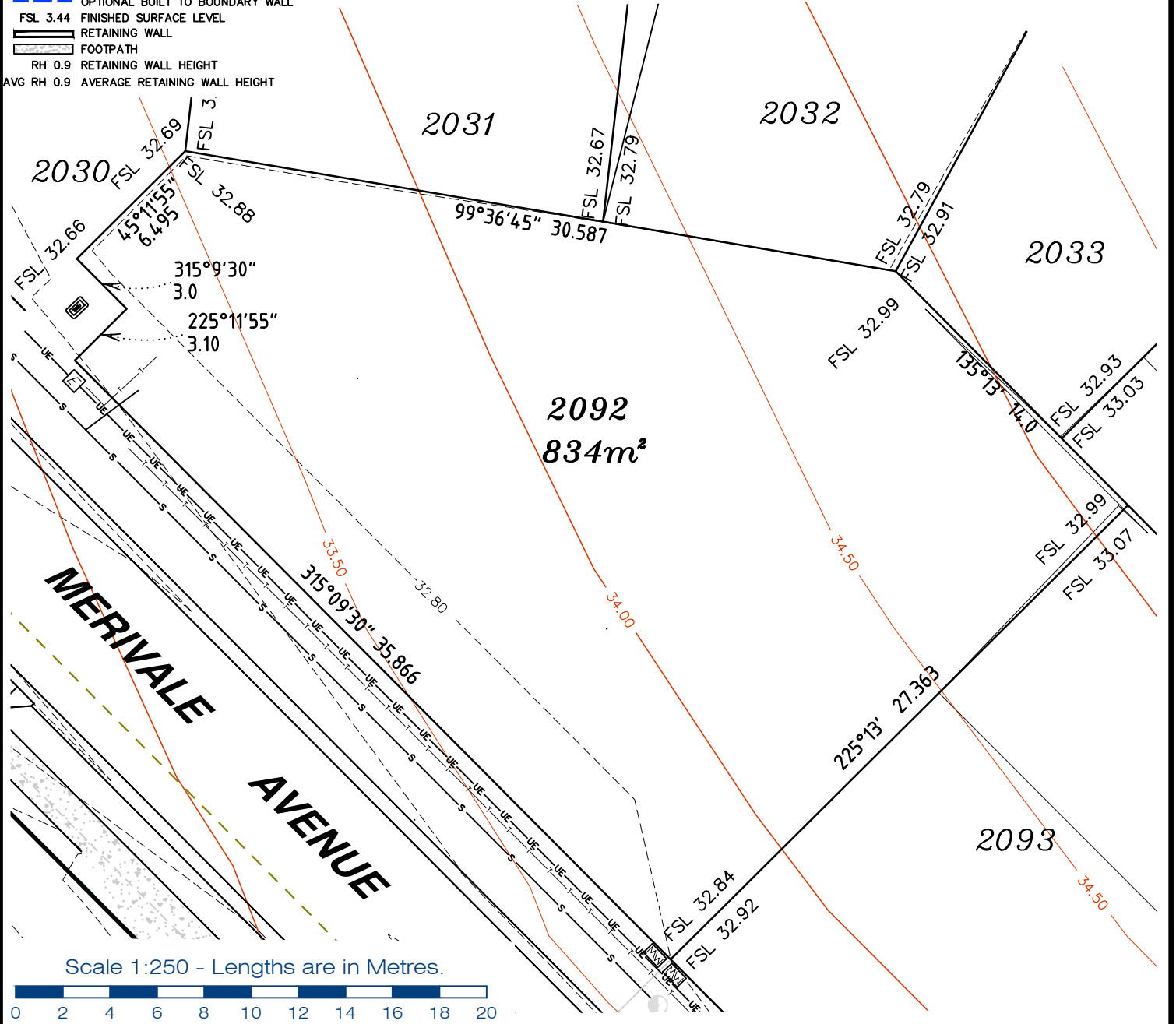
- . . SEWER MANHOLE
- . . SEWER MAINTENANCE SHAFT
- . . SEWER RODDING END
- . . STORMWATER MANHOLE
- . . GULLY TRAP
- . . WATER METER
- . . FIRE HYDRANT
- . . STOP VALVE
- . . ELECTRICITY PILLAR

- . . COMMS PIT
- . . RING MAIN UNIT
- . . LIGHT POLE
- . . DESIGN CONTOURS
- . . EXISTING SURFACE CONTOURS
- . . DESIGN FILL
- . . SEWERAGE
- . . STORMWATER
- . . WATER PIPE
- . . UNDERGROUND ELECTRICITY
- . . COMMS LINE

- . . OPTIONAL BUILT TO BOUNDARY WALL
- FSL 3.44 FINISHED SURFACE LEVEL
- . . RETAINING WALL
- . . FOOTPATH
- RH 0.9 RETAINING WALL HEIGHT
- AVG RH 0.9 AVERAGE RETAINING WALL HEIGHT

Notes:

- Final areas are subject to design changes, Council approval and field survey and may differ from those shown on this Disclosure Plan.
- Final presentation of areas will comply with requirements of the Registrar of Titles and may vary from the format on this Disclosure Plan
- "The Seller is entitled to make a Permitted Variation (as defined in Special Condition 3 of the contract) to the lot including its location, area, size, dimensions and elevation".
- Design contours are approximate only and may change during construction
- Services have been plotted from design information only and may change during construction
- All earthworks fill to lots has been placed and compacted on Level 1 basis in accordance with Australian Standard AS3798-2007 "Guidelines on earthworks for commercial and residential developments".



gassman development perspectives
 est 1985
 planning | environment | landscape | engineering | survey
 T: 3807 3333 | F: 3287 5461 | www.gassman.com.au
 LOGAN & Logan | 76 Business Street, Yatala QLD | PO Box 392, Beenleigh 4207

Client	AVJENNINGS Pty Ltd
Project	DISCLOSURE PLAN LOT 2092 (Survey plan: SP280869) RIVERTON Cusack Lane, Jimboomba

Locality	JIMBOOMBA	Issue Date	16/03/2022
Local Govt	LOGAN CITY COUNCIL	Meridian	SP280865
Scale (on A4 original)	1:250	Level Datum	AHD
REFERENCE No.	5544-2C	Contour Interval	0.2 m Design 0.5m Existing
PLAN No.	5544 S DC LOT 2092A	Drawn	S.Chowdhury
		Date Drafted	07/08/2021
		Checked	A.Geraghty

Real Property Description:
 Lot 701 on SP280865

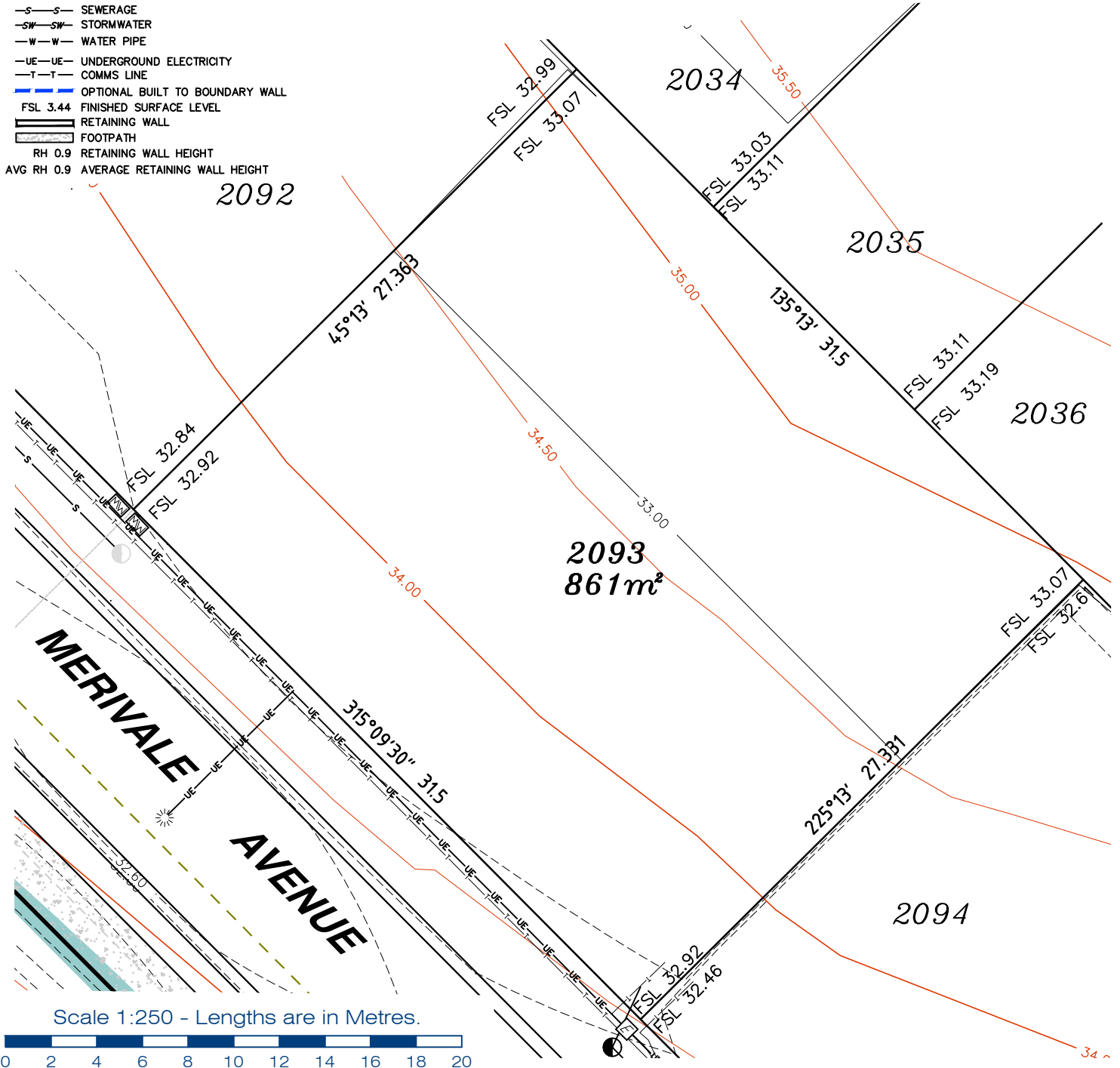


LEGEND

- . . SEWER MANHOLE
- . . SEWER MAINTENANCE SHAFT
- . . SEWER RODDING END
- . . STORMWATER MANHOLE
- . . GULLY TRAP
- . . WATER METER
- . . FIRE HYDRANT
- . . STOP VALVE
- . . ELECTRICITY PILLAR
- . . COMMS PIT
- . . RING MAIN UNIT
- . . LIGHT POLE
- . . DESIGN CONTOURS
- . . EXISTING SURFACE CONTOURS
- . . DESIGN FILL
- . . SEWERAGE
- . . STORMWATER
- . . WATER PIPE
- . . UNDERGROUND ELECTRICITY
- . . COMMS LINE
- . . OPTIONAL BUILT TO BOUNDARY WALL
- FSL 3.44 FINISHED SURFACE LEVEL
- . . RETAINING WALL
- . . FOOTPATH
- RH 0.9 RETAINING WALL HEIGHT
- AVG RH 0.9 AVERAGE RETAINING WALL HEIGHT

Notes:

- Final areas are subject to design changes, Council approval and field survey and may differ from those shown on this Disclosure Plan.
- Final presentation of areas will comply with requirements of the Registrar of Titles and may vary from the format on this Disclosure Plan
- "The Seller is entitled to make a Permitted Variation (as defined in Special Condition 3 of the contract) to the lot including its location, area, size, dimensions and elevation".
- Design contours are approximate only and may change during construction
- Services have been plotted from design information only and may change during construction
- All earthworks fill to lots has been placed and compacted on Level 1 basis in accordance with Australian Standard AS3798-2007 "Guidelines on earthworks for commercial and residential developments".



Scale 1:250 - Lengths are in Metres.



gassman development perspectives
est 1985

planning | environment | landscape | engineering | survey

T: 3807 3333 | F: 3287 5461 | www.gassman.com.au

LOGAN & Logan | 76 Business Street, Yatala QLD | PO Box 392, Beenleigh 4207

Client	AVJENNINGS Pty Ltd
Project	DISCLOSURE PLAN LOT 2093 (Survey plan: SP280869) RIVERTON Cusack Lane, Jimboomba

Locality	JIMBOOMBA	Issue Date	16/03/2022
Local Govt	LOGAN CITY COUNCIL	Meridian	SP280865
Scale (on A4 original)	1:250	Level Datum	AHD
		Contour Interval	0.2 m Design 0.5m Existing
		Drawn	S.Chowdhury
		Date Drafted	07/08/2021
		Checked	A.Geraghty

Real Property Description:
Lot 701 on SP280865

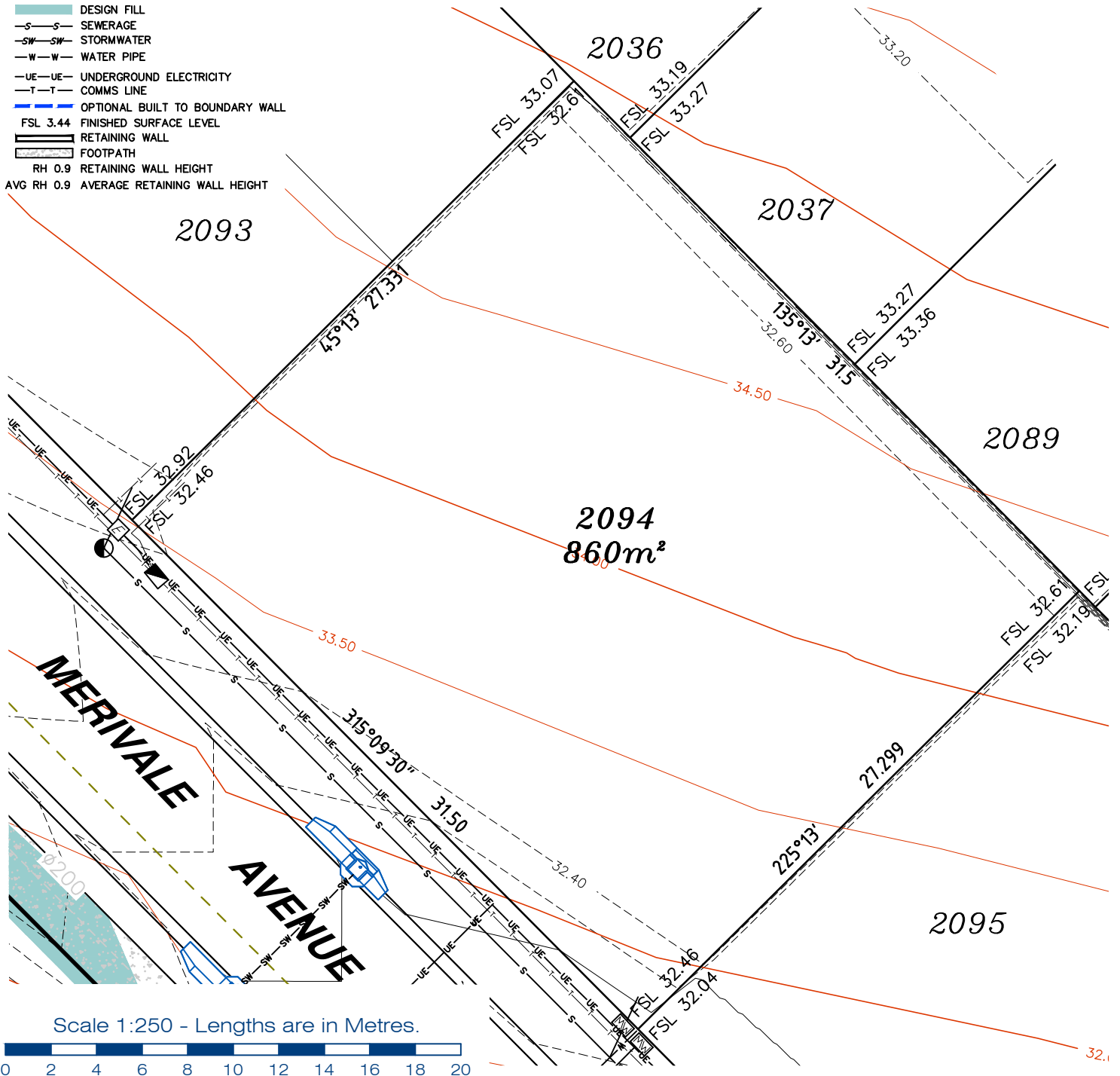
REFERENCE No. 5544-2C
PLAN No. 5544 S DC LOT 2093A



LEGEND

- . . SEWER MANHOLE
- . . SEWER MAINTENANCE SHAFT
- . . SEWER RODDING END
- . . STORMWATER MANHOLE
- . . GULLY TRAP
- . . WATER METER
- . . FIRE HYDRANT
- . . STOP VALVE
- . . ELECTRICITY PILLAR
- . . COMMS PIT
- . . RING MAIN UNIT
- . . LIGHT POLE
- . . DESIGN CONTOURS
- . . EXISTING SURFACE CONTOURS
- . . DESIGN FILL
- . . SEWERAGE
- . . STORMWATER
- . . WATER PIPE
- . . UNDERGROUND ELECTRICITY
- . . COMMS LINE
- . . OPTIONAL BUILT TO BOUNDARY WALL
- . . FSL 3.44 FINISHED SURFACE LEVEL
- . . RETAINING WALL
- . . FOOTPATH
- . . RH 0.9 RETAINING WALL HEIGHT
- . . AVG RH 0.9 AVERAGE RETAINING WALL HEIGHT

- Notes:**
- Final areas are subject to design changes, Council approval and field survey and may differ from those shown on this Disclosure Plan.
 - Final presentation of areas will comply with requirements of the Registrar of Titles and may vary from the format on this Disclosure Plan
 - "The Seller is entitled to make a Permitted Variation (as defined in Special Condition 3 of the contract) to the lot including its location, area, size, dimensions and elevation".
 - Design contours are approximate only and may change during construction
 - Services have been plotted from design information only and may change during construction
 - All earthworks fill to lots has been placed and compacted on Level 1 basis in accordance with Australian Standard AS3798-2007 "Guidelines on earthworks for commercial and residential developments".



Scale 1:250 - Lengths are in Metres.



gassman
development
perspectives

est 1985

planning | environment | landscape | engineering | survey

T: 3807 3333 | F: 3287 5461 | www.gassman.com.au

LOGAN & Logan | 76 Business Street, Yatala QLD | PO Box 392, Beenleigh 4207

Client	AVJENNINGS Pty Ltd
Project	DISCLOSURE PLAN LOT 2094 (Survey plan: SP280869) RIVERTON Cusack Lane, Jimboomba

Locality	JIMBOOMBA	Issue Date	16/03/2022
Local Govt	LOGAN CITY COUNCIL	Meridian	SP280865
Scale (on A4 original)	1:250	Level Datum	AHD
		Contour Interval	0.2 m Design 0.5m Existing
		Drawn	S.Chowdhury
		Date Drafted	07/08/2021
		Checked	A.Geraghty

Real Property Description:
Lot 701 on SP280865

REFERENCE No. 5544-2C
PLAN No. 5544 S DC LOT 2094A

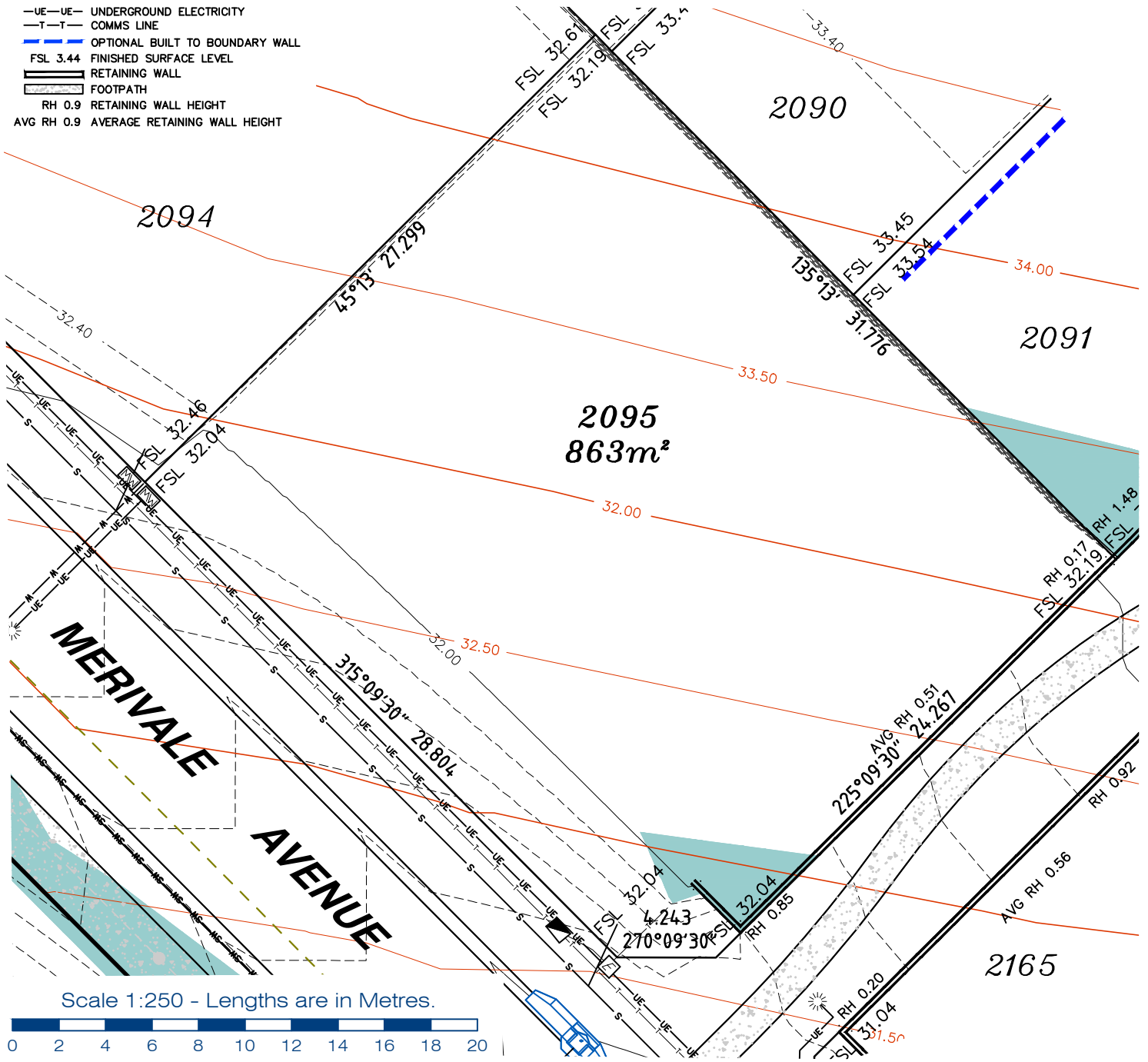
LEGEND

- . SEWER MANHOLE
- . SEWER MAINTENANCE SHAFT
- . SEWER RODDING END
- . STORMWATER MANHOLE
- . GULLY TRAP
- . WATER METER
- . FIRE HYDRANT
- . STOP VALVE
- . ELECTRICITY PILLAR

- . COMMS PIT
- . RING MAIN UNIT
- . LIGHT POLE
- DESIGN CONTOURS
- EXISTING SURFACE CONTOURS
- DESIGN FILL
- S-S SEWERAGE
- SW-SW STORMWATER
- W-W WATER PIPE
- UE-UE UNDERGROUND ELECTRICITY
- T-T COMMS LINE
- OPTIONAL BUILT TO BOUNDARY WALL
- FSL 3.44 FINISHED SURFACE LEVEL
- RETAINING WALL
- FOOTPATH
- RH 0.9 RETAINING WALL HEIGHT
- AVG RH 0.9 AVERAGE RETAINING WALL HEIGHT

Notes:

- Final areas are subject to design changes, Council approval and field survey and may differ from those shown on this Disclosure Plan.
- Final presentation of areas will comply with requirements of the Registrar of Titles and may vary from the format on this Disclosure Plan
- "The Seller is entitled to make a Permitted Variation (as defined in Special Condition 3 of the contract) to the lot including its location, area, size, dimensions and elevation".
- Design contours are approximate only and may change during construction
- Services have been plotted from design information only and may change during construction
- All earthworks fill to lots has been placed and compacted on Level 1 basis in accordance with Australian Standard AS3798-2007 "Guidelines on earthworks for commercial and residential developments".



planning | environment | landscape | engineering | survey
 T: 3807 3333 | F: 3287 5461 | www.gassman.com.au
 LOGAN & Logan | 76 Business Street, Yatala QLD | PO Box 392, Beenleigh 4207

Client	AVJENNINGS Pty Ltd
Project	DISCLOSURE PLAN LOT 2095 (Survey plan: SP280869) RIVERTON Cusack Lane, Jimboomba

Locality	JIMBOOMBA	Issue Date	16/03/2022
Local Govt	LOGAN CITY COUNCIL	Meridian	SP280865
Scale (on A4 original)	1:250	Level Datum	AHD
		Contour Interval	0.2 m Design 0.5m Existing
		Drawn	S.Chowdhury
		Date Drafted	07/08/2021
		Checked	A.Geraghty

Real Property Description:
 Lot 701 on SP280865

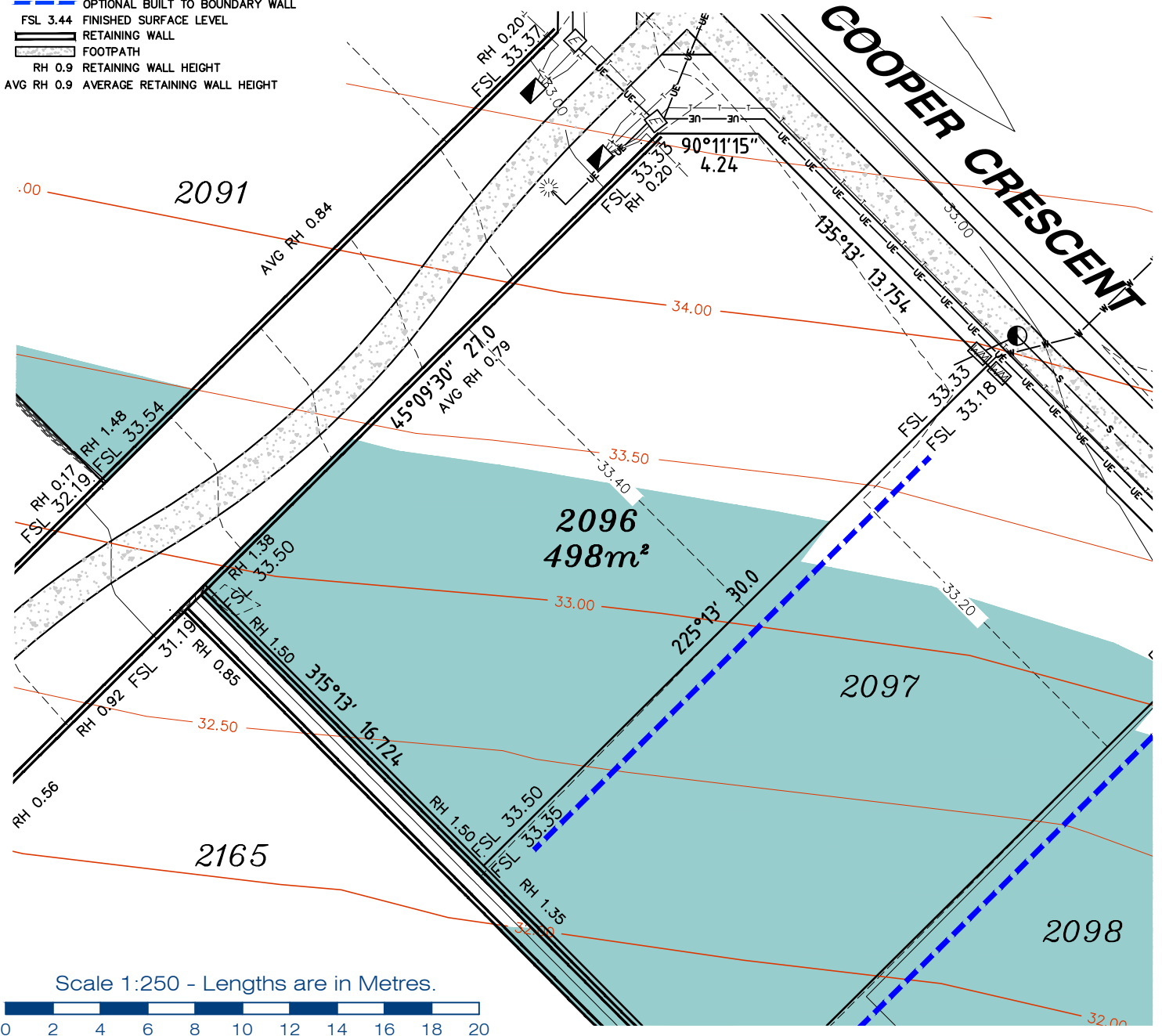
REFERENCE No. 5544-2C
PLAN No. 5544 S DC LOT 2095A

LEGEND

- ⊙ . . . SEWER MANHOLE
- ⊙ . . . SEWER MAINTENANCE SHAFT
- ⊙ . . . SEWER RODDING END
- ⊙ . . . STORMWATER MANHOLE
- ⊙ . . . GULLY TRAP
- ⊙ . . . WATER METER
- ⊙ . . . FIRE HYDRANT
- ⊙ . . . STOP VALVE
- ⊙ . . . ELECTRICITY PILLAR
- ⊙ . . . COMMS PIT
- ⊙ . . . RING MAIN UNIT
- ⊙ . . . LIGHT POLE
- . . . DESIGN CONTOURS
- . . . EXISTING SURFACE CONTOURS
- . . . DESIGN FILL
- S-S- . . . SEWERAGE
- SW-SW- . . . STORMWATER
- W-W- . . . WATER PIPE
- UE-UE- . . . UNDERGROUND ELECTRICITY
- T-T- . . . COMMS LINE
- . . . OPTIONAL BUILT TO BOUNDARY WALL
- . . . FINISHED SURFACE LEVEL
- . . . RETAINING WALL
- . . . FOOTPATH
- RH 0.9 . . . RETAINING WALL HEIGHT
- AVG RH 0.9 . . . AVERAGE RETAINING WALL HEIGHT

Notes:

- Final areas are subject to design changes, Council approval and field survey and may differ from those shown on this Disclosure Plan.
- Final presentation of areas will comply with requirements of the Registrar of Titles and may vary from the format on this Disclosure Plan
- "The Seller is entitled to make a Permitted Variation (as defined in Special Condition 3 of the contract) to the lot including its location, area, size, dimensions and elevation".
- Design contours are approximate only and may change during construction
- Services have been plotted from design information only and may change during construction
- All earthworks fill to lots has been placed and compacted on Level 1 basis in accordance with Australian Standard AS3798-2007 "Guidelines on earthworks for commercial and residential developments".



**gassman
development
perspectives**
est 1985

planning | environment | landscape | engineering | survey

T: 3807 3333 | F: 3287 5461 | www.gassman.com.au

LOGAN & Logan | 176 Business Street, Yatala QLD | PO Box 392, Beenleigh 4207

Client	AVJENNINGS Pty Ltd
Project	DISCLOSURE PLAN LOT 2096 (Survey plan: SP280869) RIVERTON Cusack Lane, Jimboomba

Locality	JIMBOOMBA	Issue Date	16/03/2022
Local Govt	LOGAN CITY COUNCIL	Meridian	SP280865
Scale (on A4 original)	1:250	Level Datum	AHD
		Contour Interval	0.2 m Design 0.5m Existing
		Drawn	S.Chowdhury
		Date Drafted	20/08/2021
		Checked	A.Geraghty

Real Property Description:
Lot 701 on SP280865

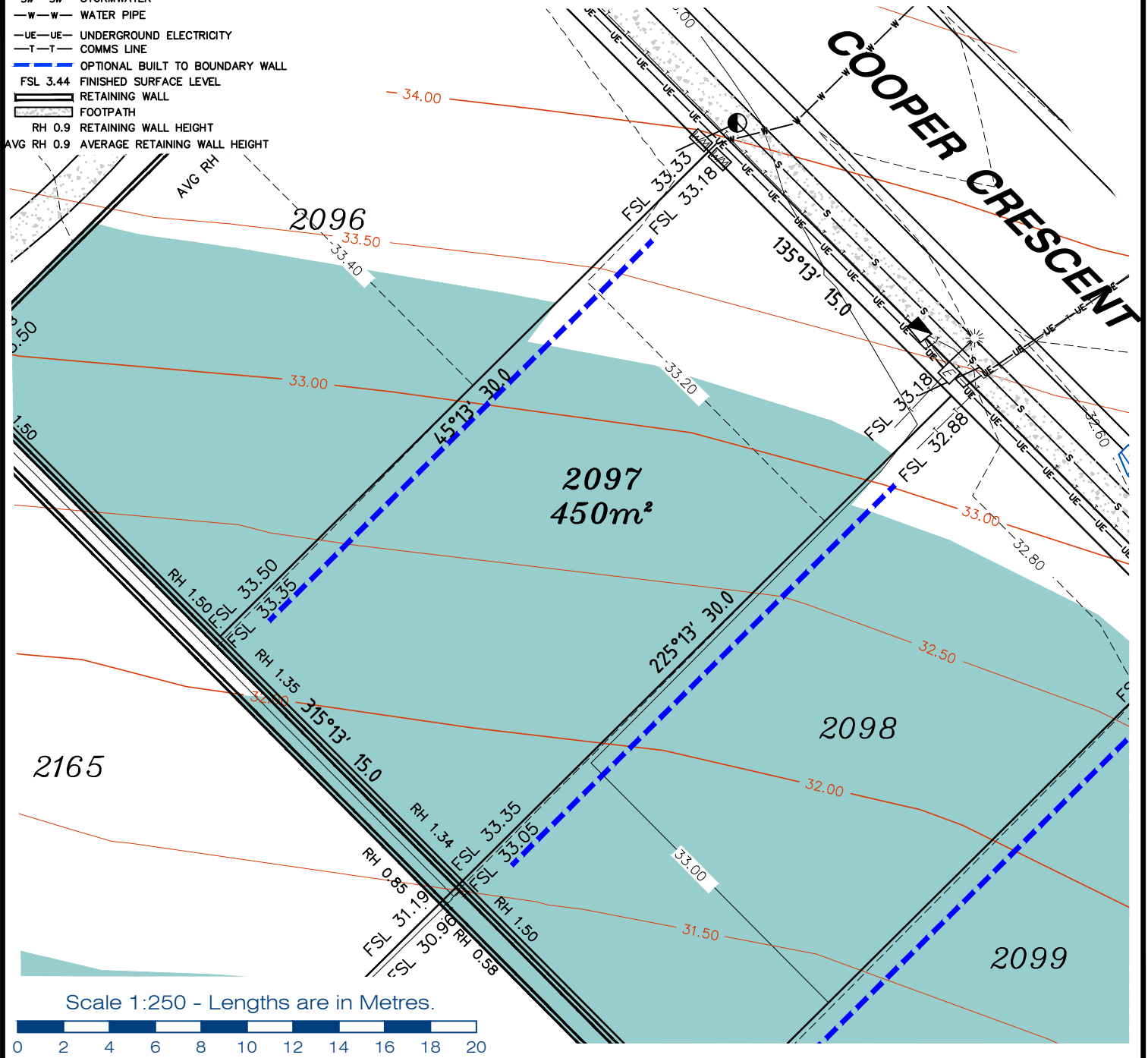
REFERENCE No. **5544-2C**
PLAN No. **5544 S DC LOT 2096A**

LEGEND

- ⊙ . . SEWER MANHOLE
- ⊕ . . SEWER MAINTENANCE SHAFT
- ⊖ . . SEWER RODDING END
- ⊗ . . STORMWATER MANHOLE
- ⊘ . . GULLY TRAP
- ⊙ . . WATER METER
- ⊕ . . FIRE HYDRANT
- ⊖ . . STOP VALVE
- ⊗ . . ELECTRICITY PILLAR
- ⊘ . . COMMS PIT
- ⊙ . . RING MAIN UNIT
- ⊕ . . LIGHT POLE
- . . DESIGN CONTOURS
- . . EXISTING SURFACE CONTOURS
- . . DESIGN FILL
- S—S . . SEWERAGE
- SW—SW . . STORMWATER
- W—W . . WATER PIPE
- UE—UE . . UNDERGROUND ELECTRICITY
- T—T . . COMMS LINE
- . . OPTIONAL BUILT TO BOUNDARY WALL
- FSL 3.44 . . FINISHED SURFACE LEVEL
- . . RETAINING WALL
- . . FOOTPATH
- RH 0.9 . . RETAINING WALL HEIGHT
- AVG RH 0.9 . . AVERAGE RETAINING WALL HEIGHT

Notes:

- Final areas are subject to design changes, Council approval and field survey and may differ from those shown on this Disclosure Plan.
- Final presentation of areas will comply with requirements of the Registrar of Titles and may vary from the format on this Disclosure Plan
- "The Seller is entitled to make a Permitted Variation (as defined in Special Condition 3 of the contract) to the lot including its location, area, size, dimensions and elevation".
- Design contours are approximate only and may change during construction
- Services have been plotted from design information only and may change during construction
- All earthworks fill to lots has been placed and compacted on Level 1 basis in accordance with Australian Standard AS3798-2007 "Guidelines on earthworks for commercial and residential developments".



planning | environment | landscape | engineering | survey

T: 3807 3333 | F: 3287 5461 | www.gassman.com.au

LOGAN & Logan | 76 Business Street, Yatala QLD | PO Box 392, Beenleigh 4207

Client	AVJENNINGS Pty Ltd
Project	DISCLOSURE PLAN LOT 2097 (Survey plan: SP280869) RIVERTON Cusack Lane, Jimboomba

Locality	JIMBOOMBA	Issue Date	16/03/2022
Local Govt	LOGAN CITY COUNCIL	Meridian	SP280865
Scale (on A4 original)	1:250	Level Datum	AHD
		Contour Interval	0.2 m Design 0.5m Existing
		Drawn	S.Chowdhury
		Date Drafted	20/08/2021
		Checked	A.Geraghty

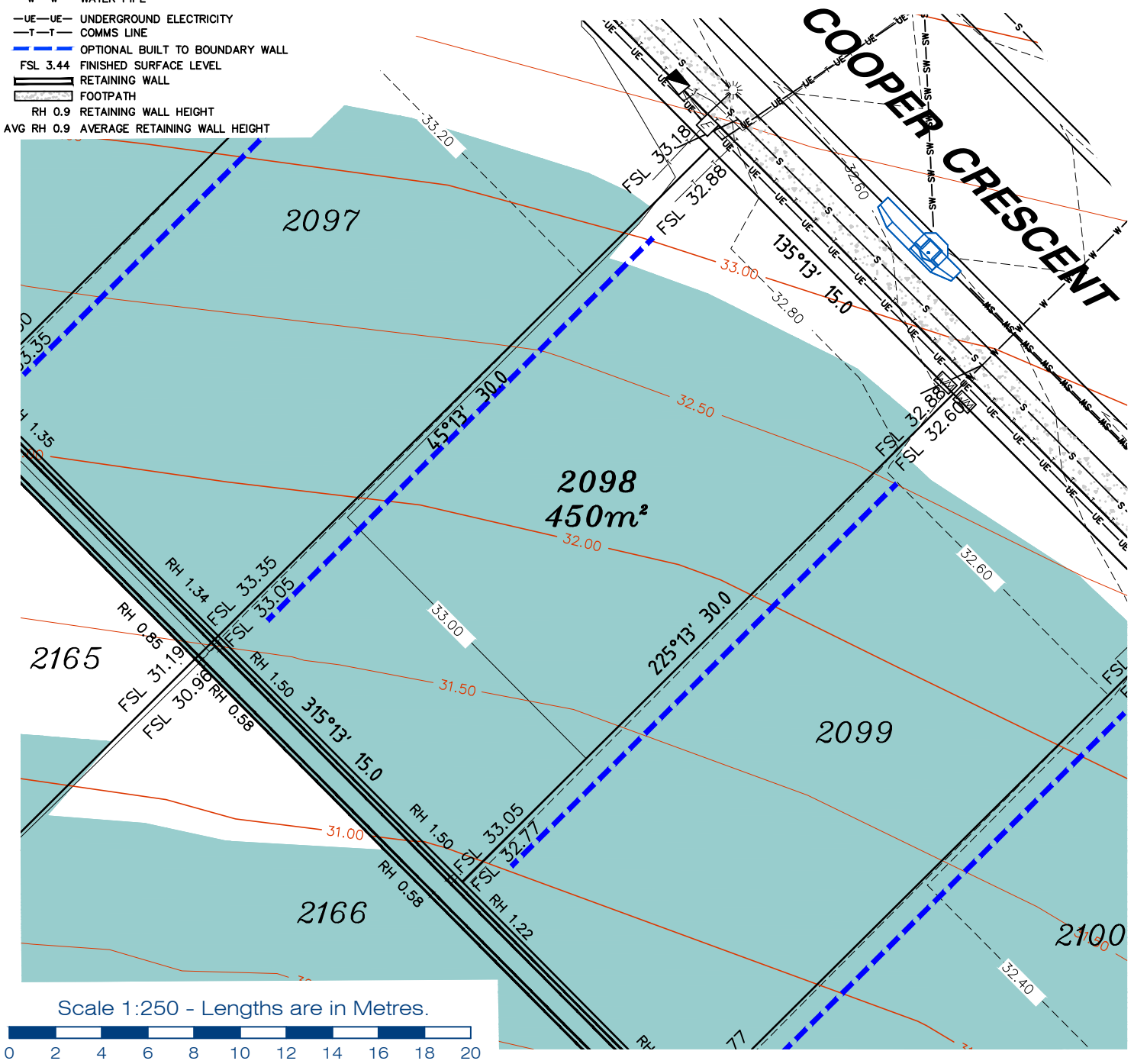
Real Property Description:
Lot 701 on SP280865

REFERENCE No. **5544-2C**
PLAN No. **5544 S DC LOT 2097A**

LEGEND

- . . SEWER MANHOLE
- . . SEWER MAINTENANCE SHAFT
- . . SEWER RODDING END
- . . STORMWATER MANHOLE
- . . GULLY TRAP
- . . WATER METER
- . . FIRE HYDRANT
- . . STOP VALVE
- . . ELECTRICITY PILLAR
- . . COMMS PIT
- . . RING MAIN UNIT
- . . LIGHT POLE
- — DESIGN CONTOURS
- — EXISTING SURFACE CONTOURS
- — DESIGN FILL
- S—S SEWERAGE
- SW—SW STORMWATER
- W—W WATER PIPE
- UE—UE UNDERGROUND ELECTRICITY
- T—T COMMS LINE
- — OPTIONAL BUILT TO BOUNDARY WALL
- FSL 3.44 FINISHED SURFACE LEVEL
- RETAINING WALL
- FOOTPATH
- RH 0.9 RETAINING WALL HEIGHT
- AVG RH 0.9 AVERAGE RETAINING WALL HEIGHT

- Notes:**
- Final areas are subject to design changes, Council approval and field survey and may differ from those shown on this Disclosure Plan.
 - Final presentation of areas will comply with requirements of the Registrar of Titles and may vary from the format on this Disclosure Plan
 - "The Seller is entitled to make a Permitted Variation (as defined in Special Condition 3 of the contract) to the lot including its location, area, size, dimensions and elevation".
 - Design contours are approximate only and may change during construction
 - Services have been plotted from design information only and may change during construction
 - All earthworks fill to lots has been placed and compacted on Level 1 basis in accordance with Australian Standard AS3798-2007 "Guidelines on earthworks for commercial and residential developments".



**gassman
development
perspectives**

est 1985

planning | environment | landscape | engineering | survey

T: 3807 3333 | F: 3287 5461 | www.gassman.com.au

LOGAN & Logan | 176 Business Street, Yatala QLD | PO Box 392, Beenleigh 4207

Client	AVJENNINGS Pty Ltd
Project	DISCLOSURE PLAN LOT 2098 (Survey plan: SP280869) RIVERTON Cusack Lane, Jimboomba

Locality	JIMBOOMBA	Issue Date	16/03/2022
Local Govt	LOGAN CITY COUNCIL	Meridian	SP280865
Scale (on A4 original)	1:250	Level Datum	AHD
		Contour Interval	0.2 m Design 0.5m Existing
		Drawn	S.Chowdhury
		Date Drafted	20/08/2021
		Checked	A.Geraghty

Real Property Description:
Lot 701 on SP280865

REFERENCE No. **5544-2C**
PLAN No. **5544 S DC LOT 2098A**

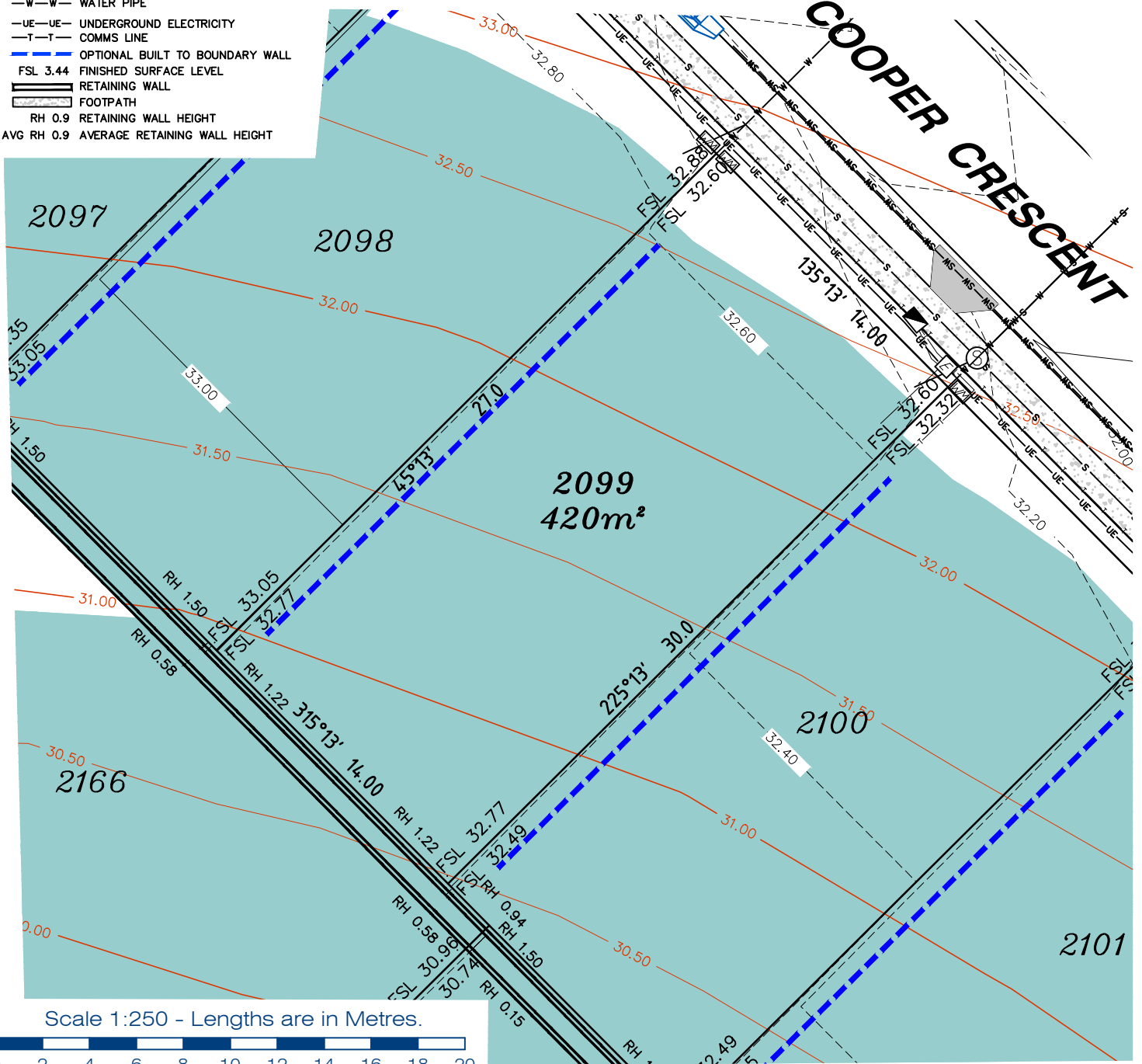
LEGEND

- ⊙ . . SEWER MANHOLE
- ⊕ . . SEWER MAINTENANCE SHAFT
- ⊙ . . SEWER RODDING END
- ⊕ . . STORMWATER MANHOLE
- ⊕ . . GULLY TRAP
- ⊕ . . WATER METER
- ⊕ . . FIRE HYDRANT
- ⊕ . . STOP VALVE
- ⊕ . . ELECTRICITY PILLAR

- ⊕ . . COMMS PIT
- ⊕ . . RING MAIN UNIT
- ⊕ . . LIGHT POLE
- . . DESIGN CONTOURS
- . . EXISTING SURFACE CONTOURS
- . . DESIGN FILL
- S—S . . SEWERAGE
- SW—SW . . STORMWATER
- W—W . . WATER PIPE
- UE—UE . . UNDERGROUND ELECTRICITY
- T—T . . COMMS LINE
- . . OPTIONAL BUILT TO BOUNDARY WALL
- FSL 3.44 . . FINISHED SURFACE LEVEL
- . . RETAINING WALL
- . . FOOTPATH
- RH 0.9 . . RETAINING WALL HEIGHT
- AVG RH 0.9 . . AVERAGE RETAINING WALL HEIGHT

Notes:

- Final areas are subject to design changes, Council approval and field survey and may differ from those shown on this Disclosure Plan.
- Final presentation of areas will comply with requirements of the Registrar of Titles and may vary from the format on this Disclosure Plan
- "The Seller is entitled to make a Permitted Variation (as defined in Special Condition 3 of the contract) to the lot including its location, area, size, dimensions and elevation".
- Design contours are approximate only and may change during construction
- Services have been plotted from design information only and may change during construction
- All earthworks fill to lots has been placed and compacted on Level 1 basis in accordance with Australian Standard AS3798-2007 "Guidelines on earthworks for commercial and residential developments".



**gassman
development
perspectives**

planning | environment | landscape | engineering | survey

T: 3807 3333 | F: 3287 5461 | www.gassman.com.au

LOGAN & Logan | 176 Business Street, Yatala QLD | PO Box 392, Beenleigh 4207

Client	AVJENNINGS Pty Ltd
Project	DISCLOSURE PLAN LOT 2099 (Survey plan: SP280869) RIVERTON Cusack Lane, Jimboomba

Locality	JIMBOOMBA	Issue Date	16/03/2022
Local Govt	LOGAN CITY COUNCIL	Meridian	SP280865
Scale (on A4 original)	1:250	Level Datum	AHD
		Contour Interval	0.2 m Design 0.5m Existing
		Drawn	S.Chowdhury
		Date Drafted	20/08/2021
		Checked	A.Geraghty

Real Property Description:
Lot 701 on SP280865

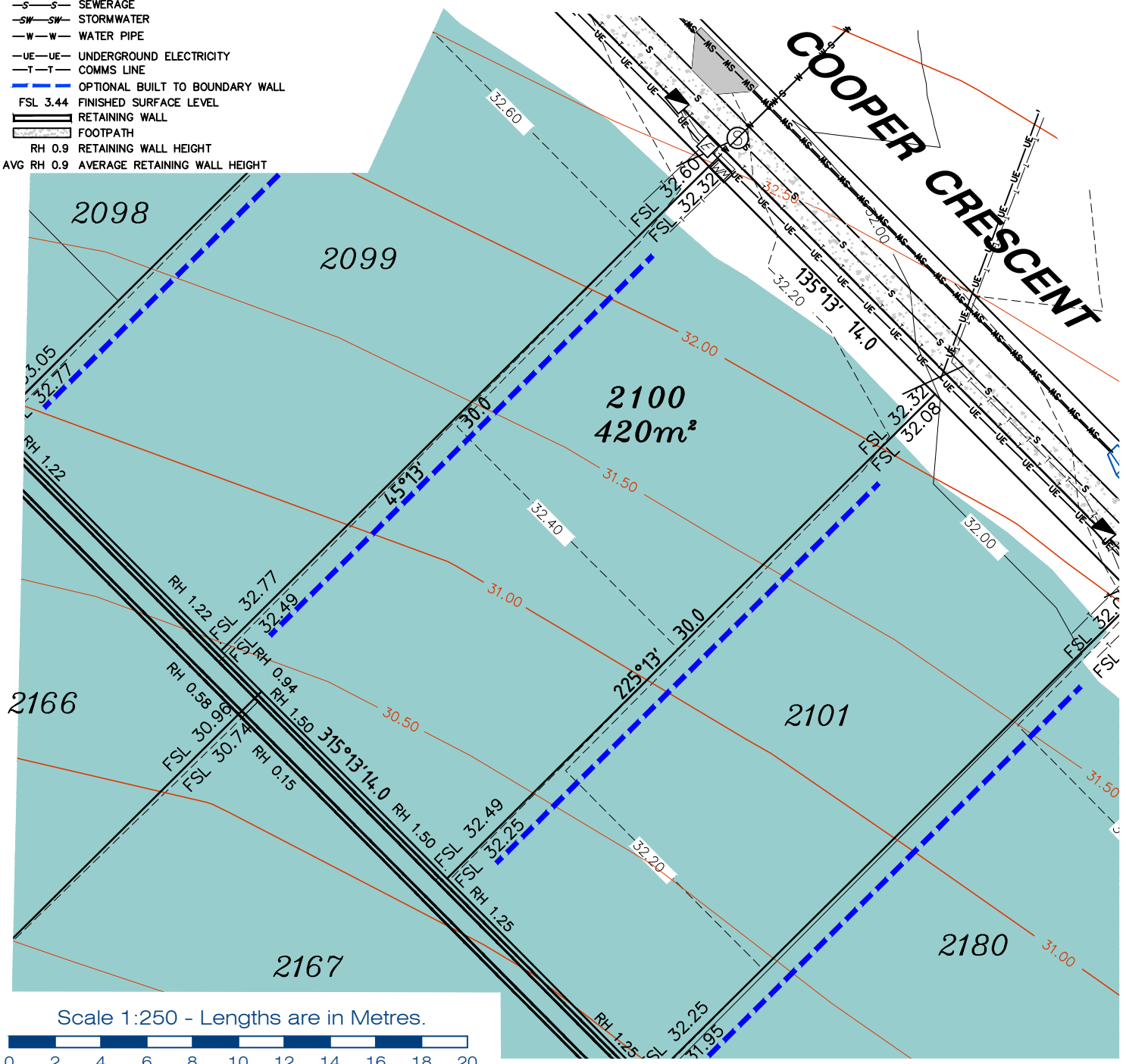
REFERENCE No. **5544-2C**
PLAN No. **5544 S DC LOT 2099A**



LEGEND

- Notes:**
- Final areas are subject to design changes, Council approval and field survey and may differ from those shown on this Disclosure Plan.
 - Final presentation of areas will comply with requirements of the Registrar of Titles and may vary from the format on this Disclosure Plan
 - "The Seller is entitled to make a Permitted Variation (as defined in Special Condition 3 of the contract) to the lot including its location, area, size, dimensions and elevation".
 - Design contours are approximate only and may change during construction
 - Services have been plotted from design information only and may change during construction
 - All earthworks fill to lots has been placed and compacted on Level 1 basis in accordance with Australian Standard AS3798-2007 "Guidelines on earthworks for commercial and residential developments".

- SEWER MANHOLE
- SEWER MAINTENANCE SHAFT
- SEWER RODDING END
- STORMWATER MANHOLE
- GULLY TRAP
- WATER METER
- FIRE HYDRANT
- STOP VALVE
- ELECTRICITY PILLAR
- COMMS PIT
- RING MAIN UNIT
- LIGHT POLE
- DESIGN CONTOURS
- EXISTING SURFACE CONTOURS
- DESIGN FILL
- SEWERAGE
- STORMWATER
- WATER PIPE
- UNDERGROUND ELECTRICITY
- COMMS LINE
- OPTIONAL BUILT TO BOUNDARY WALL
- FSL 3.44 FINISHED SURFACE LEVEL
- RETAINING WALL
- FOOTPATH
- RH 0.9 RETAINING WALL HEIGHT
- AVG RH 0.9 AVERAGE RETAINING WALL HEIGHT



Client	AVJENNINGS Pty Ltd
Project	DISCLOSURE PLAN LOT 2100 (Survey plan: SP280869) RIVERTON Cusack Lane, Jimboomba

Locality	JIMBOOMBA	Issue Date	16/03/2022
Local Govt	LOGAN CITY COUNCIL	Meridian	SP280865
Scale (on A4 original)	1:250	Level Datum	AHD
		Contour Interval	0.2 m Design 0.5m Existing
		Drawn	S.Chowdhury
		Date Drafted	20/08/2021
		Checked	A.Geraghty

Real Property Description:
Lot 701 on SP280865

REFERENCE No. **5544-2C**
PLAN No. **5544 S DC LOT 2100A**

LEGEND

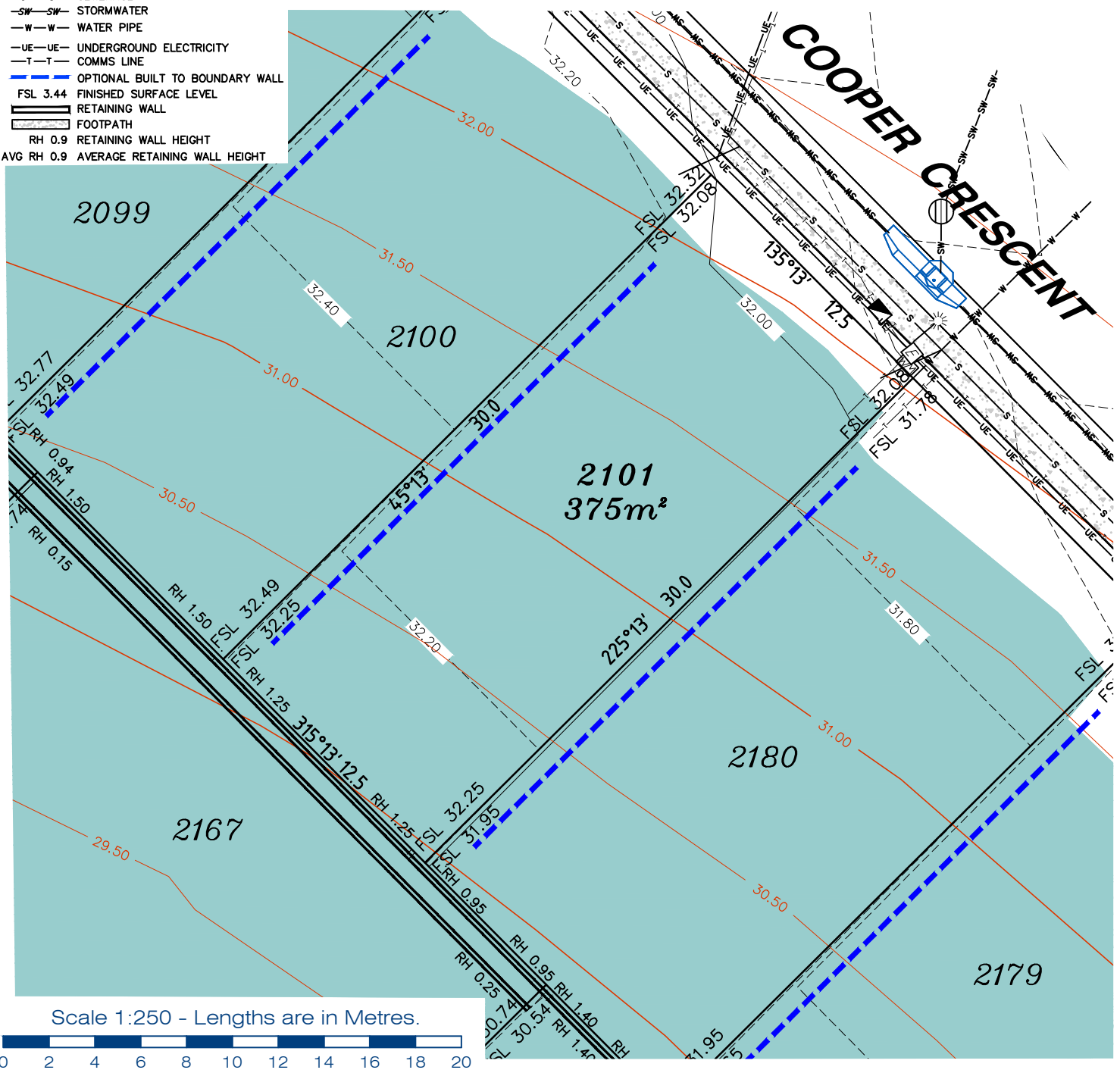
- ⊙ . . SEWER MANHOLE
- ⊙S . . SEWER MAINTENANCE SHAFT
- ⊙R . . SEWER RODDING END
- ⊙M . . STORMWATER MANHOLE
- ⊙G . . GULLY TRAP
- ⊙W . . WATER METER
- ⊙H . . FIRE HYDRANT
- ⊙X . . STOP VALVE
- ⊙E . . ELECTRICITY PILLAR

- ⊙ . . COMMS PIT
- ⊙R . . RING MAIN UNIT
- ⊙ . . LIGHT POLE
- — — DESIGN CONTOURS
- — — EXISTING SURFACE CONTOURS
- — — DESIGN FILL

- S—S— SEWERAGE
- SW—SW— STORMWATER
- W—W— WATER PIPE
- UE—UE— UNDERGROUND ELECTRICITY
- T—T— COMMS LINE
- — — OPTIONAL BUILT TO BOUNDARY WALL
- FSL 3.44 FINISHED SURFACE LEVEL
- — — RETAINING WALL
- — — FOOTPATH
- RH 0.9 RETAINING WALL HEIGHT
- AVG RH 0.9 AVERAGE RETAINING WALL HEIGHT

Notes:

- Final areas are subject to design changes, Council approval and field survey and may differ from those shown on this Disclosure Plan.
- Final presentation of areas will comply with requirements of the Registrar of Titles and may vary from the format on this Disclosure Plan
- "The Seller is entitled to make a Permitted Variation (as defined in Special Condition 3 of the contract) to the lot including its location, area, size, dimensions and elevation".
- Design contours are approximate only and may change during construction
- Services have been plotted from design information only and may change during construction
- All earthworks fill to lots has been placed and compacted on Level 1 basis in accordance with Australian Standard AS3798-2007 "Guidelines on earthworks for commercial and residential developments".



Scale 1:250 - Lengths are in Metres.



Client	AVJENNINGS Pty Ltd
Project	DISCLOSURE PLAN LOT 2101 (Survey plan: SP280869) RIVERTON Cusack Lane, Jimboomba

Locality	JIMBOOMBA	Issue Date	16/03/2022
Local Govt	LOGAN CITY COUNCIL	Meridian	SP280865
Scale (on A4 original)	1:250	Level Datum	AHD
		Contour Interval	0.2 m Design 0.5m Existing
		Drawn	S.Chowdhury
		Date Drafted	20/08/2021
		Checked	A.Geraghty

Real Property Description:
Lot 701 on SP280865

REFERENCE No. **5544-2C**
PLAN No. **5544 S DC LOT 2101A**

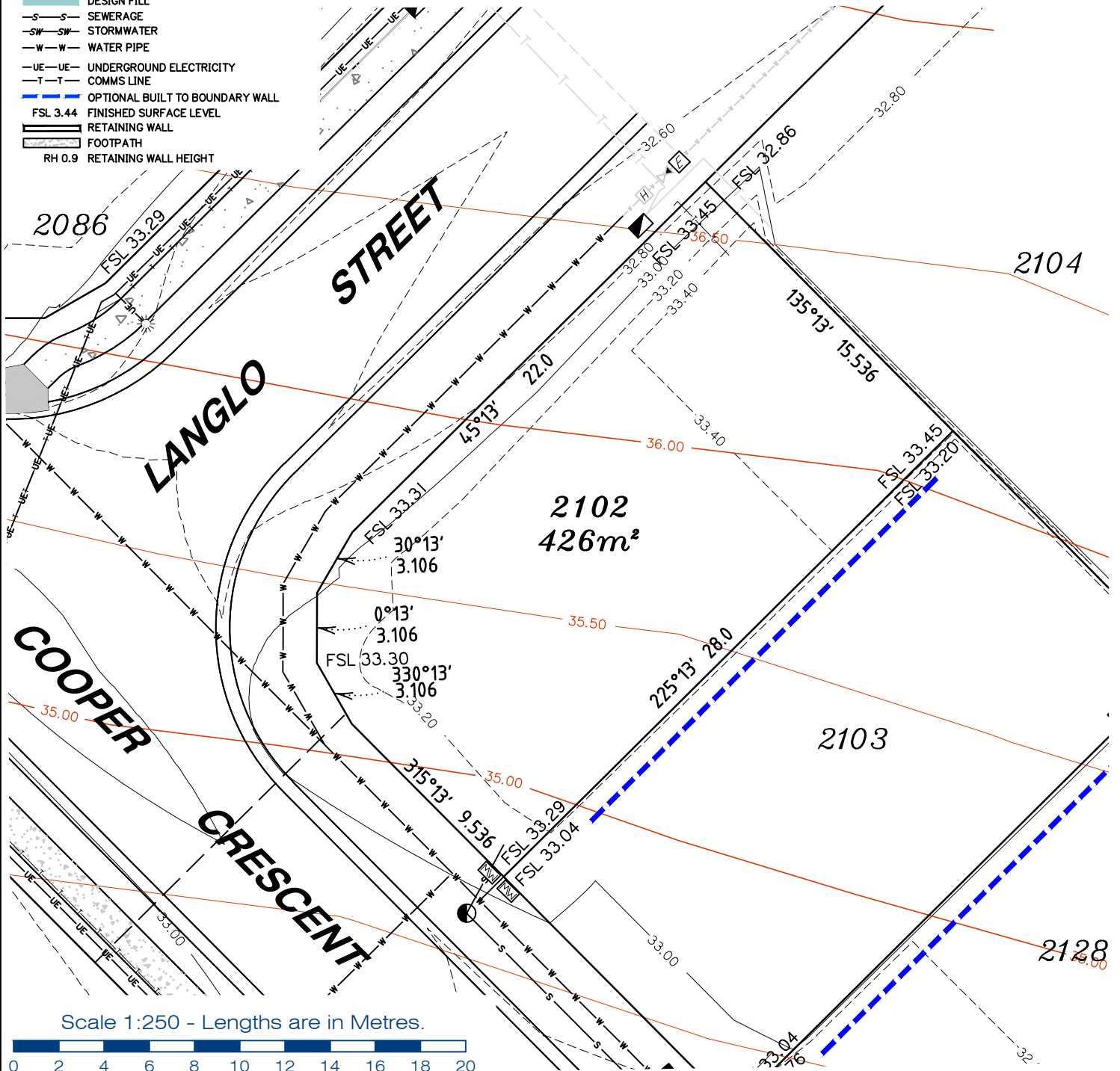
LEGEND

- . . SEWER MANHOLE
- ⊙ . . SEWER MAINTENANCE SHAFT
- ⊙ . . SEWER RODDING END
- ⊙ . . STORMWATER MANHOLE
- ⊙ . . GULLY TRAP
- ⊙ . . WATER METER
- ⊙ . . FIRE HYDRANT
- ⊙ . . STOP VALVE
- ⊙ . . ELECTRICITY PILLAR

- ⊙ . . COMMS PIT
- ⊙ . . RING MAIN UNIT
- ⊙ . . LIGHT POLE
- . . DESIGN CONTOURS
- . . EXISTING SURFACE CONTOURS
- . . DESIGN FILL
- . . SEWERAGE
- . . STORMWATER
- . . WATER PIPE
- . . UNDERGROUND ELECTRICITY
- . . COMMS LINE
- . . OPTIONAL BUILT TO BOUNDARY WALL
- . . FSL 3.44 FINISHED SURFACE LEVEL
- . . RETAINING WALL
- . . FOOTPATH
- . . RH 0.9 RETAINING WALL HEIGHT

Notes:

- Final areas are subject to design changes, Council approval and field survey and may differ from those shown on this Disclosure Plan.
- Final presentation of areas will comply with requirements of the Registrar of Titles and may vary from the format on this Disclosure Plan
- "The Seller is entitled to make a Permitted Variation (as defined in Special Condition 3 of the contract) to the lot including its location, area, size, dimensions and elevation".
- Design contours are approximate only and may change during construction
- Services have been plotted from design information only and may change during construction
- All earthworks fill to lots has been placed and compacted on Level 1 basis in accordance with Australian Standard AS3798-2007 "Guidelines on earthworks for commercial and residential developments".



Scale 1:250 - Lengths are in Metres.



planning | environment | landscape | engineering | survey

T: 3807 3333 | F: 3287 5461 | www.gassman.com.au

LOGAN & Logan | 76 Business Street, Yatala QLD | PO Box 392, Beenleigh 4207

Client	AVJENNINGS Pty Ltd
Project	DISCLOSURE PLAN LOT 2102 (Survey plan: SP280869) RIVERTON Cusack Lane, Jimboomba

Locality	JIMBOOMBA	Issue Date	20/09/2021
Local Govt	LOGAN CITY COUNCIL	Meridian	SP280865
Scale (on A4 original)	1:250	Level Datum	AHD
		Contour Interval	0.2 m Design 0.5m Existing
		Drawn	S.Chowdhury
		Date Drafted	07/08/2021
		Checked	A.Geraghty

Real Property Description:
Lot 701 on SP280865

REFERENCE No. **5544-2C**
PLAN No. **5544 S DC LOT 2102**

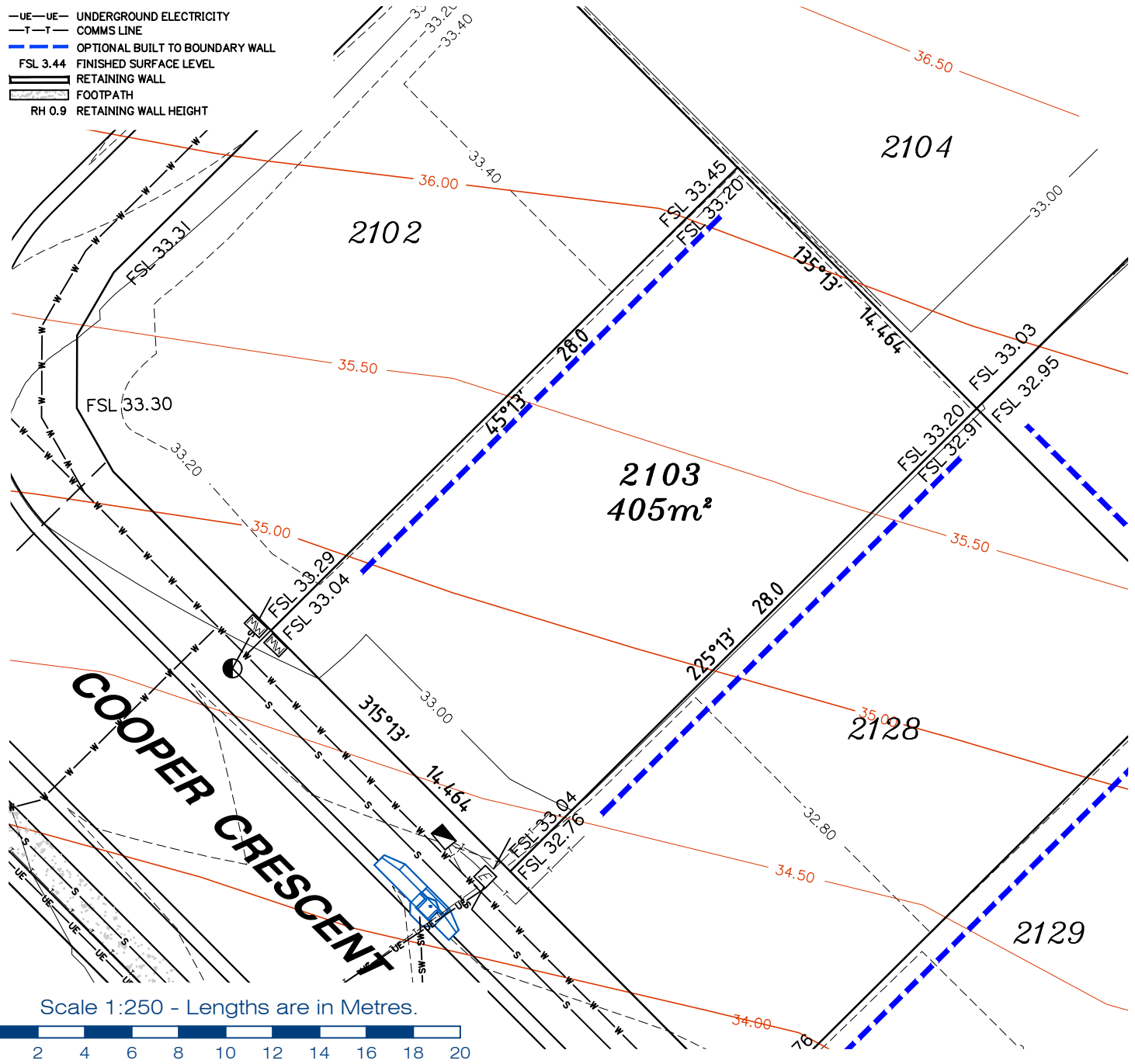


LEGEND

- SEWER MANHOLE
- SEWER MAINTENANCE SHAFT
- SEWER RODDING END
- STORMWATER MANHOLE
- GULLY TRAP
- WATER METER
- FIRE HYDRANT
- STOP VALVE
- ELECTRICITY PILLAR
- COMMS PIT
- RING MAIN UNIT
- LIGHT POLE
- DESIGN CONTOURS
- EXISTING SURFACE CONTOURS
- DESIGN FILL
- SEWERAGE
- STORMWATER
- WATER PIPE
- UNDERGROUND ELECTRICITY
- COMMS LINE
- OPTIONAL BUILT TO BOUNDARY WALL
- FSL 3.44 FINISHED SURFACE LEVEL
- RETAINING WALL
- FOOTPATH
- RETAINING WALL HEIGHT

Notes:

- Final areas are subject to design changes, Council approval and field survey and may differ from those shown on this Disclosure Plan.
- Final presentation of areas will comply with requirements of the Registrar of Titles and may vary from the format on this Disclosure Plan
- "The Seller is entitled to make a Permitted Variation (as defined in Special Condition 3 of the contract) to the lot including its location, area, size, dimensions and elevation".
- Design contours are approximate only and may change during construction
- Services have been plotted from design information only and may change during construction
- All earthworks fill to lots has been placed and compacted on Level 1 basis in accordance with Australian Standard AS3798-2007 "Guidelines on earthworks for commercial and residential developments".



Scale 1:250 - Lengths are in Metres.



T: 3807 3333 | F: 3287 5461 | www.gassman.com.au
 LOGAN & Logan | 76 Business Street, Yatala QLD | PO Box 392, Beenleigh 4207

Client	AVJENNINGS Pty Ltd
Project	DISCLOSURE PLAN LOT 2103 (Survey plan: SP280869) RIVERTON Cusack Lane, Jimboomba

Locality	JIMBOOMBA	Issue Date	20/09/2021
Local Govt	LOGAN CITY COUNCIL	Meridian	SP280865
Scale (on A4 original)	1:250	Level Datum	AHD
		Contour Interval	0.2 m Design 0.5m Existing
		Drawn	S.Chowdhury
		Date Drafted	20/08/2021
		Checked	A.Geraghty

Real Property Description:
Lot 701 on SP280865

REFERENCE No. 5544-2C
PLAN No. 5544 S DC LOT 2103

LEGEND

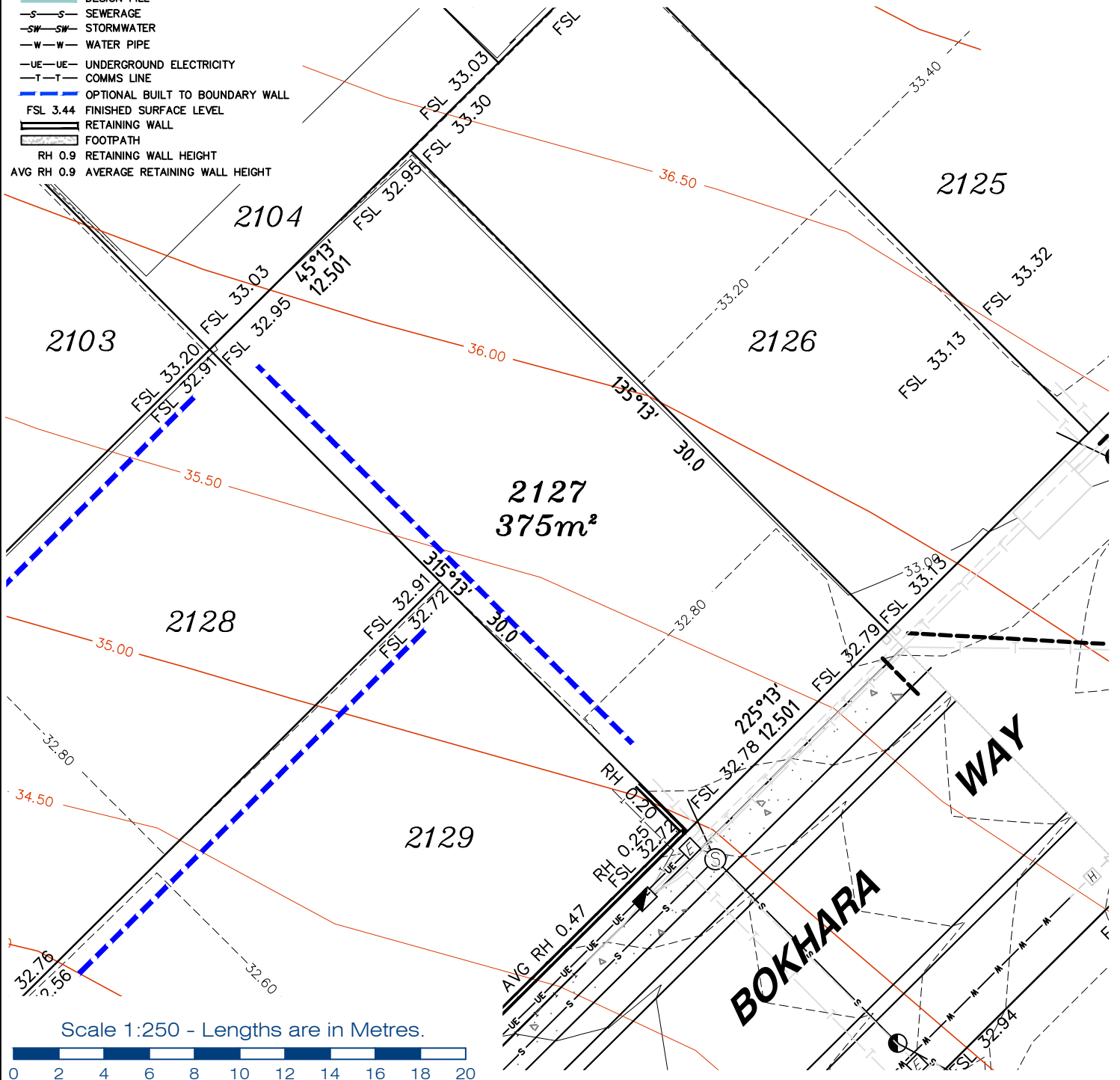
- ⊙ . . . SEWER MANHOLE
- ⊙ . . . SEWER MAINTENANCE SHAFT
- ⊙ . . . SEWER RODDING END
- ⊙ . . . STORMWATER MANHOLE
- ⊙ . . . GULLY TRAP
- ⊙ . . . WATER METER
- ⊙ . . . FIRE HYDRANT
- ⊙ . . . STOP VALVE
- ⊙ . . . ELECTRICITY PILLAR

- ⊙ . . . COMMS PIT
- ⊙ . . . RING MAIN UNIT
- ⊙ . . . LIGHT POLE
- . . . DESIGN CONTOURS
- . . . EXISTING SURFACE CONTOURS
- . . . DESIGN FILL
- S---S--- SEWERAGE
- SW---SW--- STORMWATER
- W---W--- WATER PIPE
- UE---UE--- UNDERGROUND ELECTRICITY
- T---T--- COMMS LINE

- . . . OPTIONAL BUILT TO BOUNDARY WALL
- FSL 3.44 FINISHED SURFACE LEVEL
- . . . RETAINING WALL
- . . . FOOTPATH
- RH 0.9 RETAINING WALL HEIGHT
- AVG RH 0.9 AVERAGE RETAINING WALL HEIGHT

Notes:

- Final areas are subject to design changes, Council approval and field survey and may differ from those shown on this Disclosure Plan.
- Final presentation of areas will comply with requirements of the Registrar of Titles and may vary from the format on this Disclosure Plan
- "The Seller is entitled to make a Permitted Variation (as defined in Special Condition 3 of the contract) to the lot including its location, area, size, dimensions and elevation".
- Design contours are approximate only and may change during construction
- Services have been plotted from design information only and may change during construction
- All earthworks fill to lots has been placed and compacted on Level 1 basis in accordance with Australian Standard AS3798-2007 "Guidelines on earthworks for commercial and residential developments".



Client	AVJENNINGS Pty Ltd
Project	DISCLOSURE PLAN LOT 2127 (Survey plan: SP280869) RIVERTON Cusack Lane, Jimboomba

Locality	JIMBOOMBA	Issue Date	16/03/2022
Local Govt	LOGAN CITY COUNCIL	Meridian	SP280865
Scale (on A4 original)	1:250	Level Datum	AHD
		Contour Interval	0.2 m Design 0.5m Existing
		Drawn	S.Chowdhury
		Date Drafted	20/08/2021
		Checked	A.Geraghty

Real Property Description:
Lot 701 on SP280865

REFERENCE No. 5544-2C
PLAN No. 5544 S DC LOT 2127A

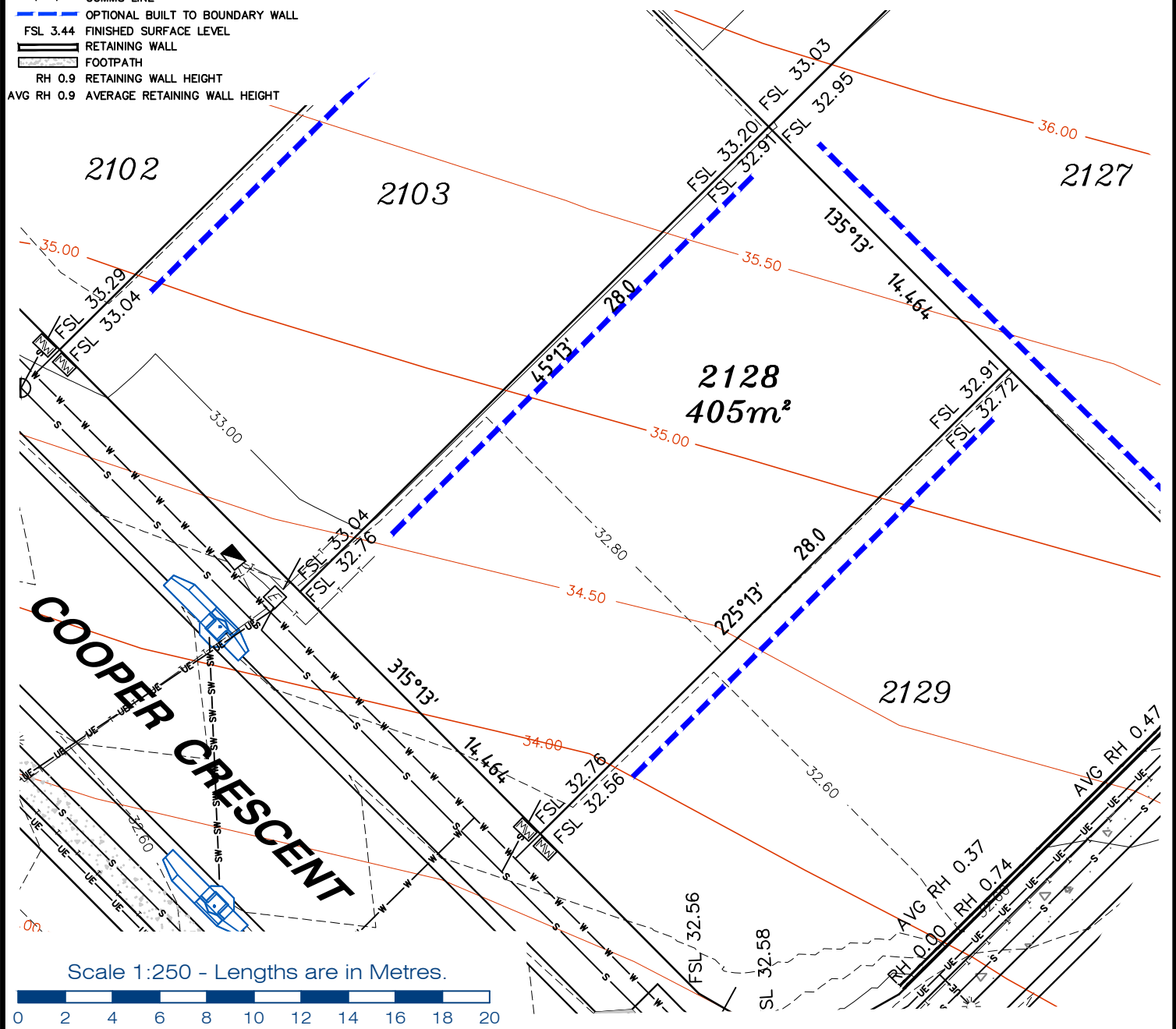
gassman development perspectives
est 1985
planning | environment | landscape | engineering | survey
T: 3807 3333 | F: 3287 5461 | www.gassman.com.au
LOGAN & Logan | 176 Business Street, Yatala QLD | PO Box 392, Beenleigh 4207

LEGEND

- . . SEWER MANHOLE
- . . SEWER MAINTENANCE SHAFT
- . . SEWER RODDING END
- . . STORMWATER MANHOLE
- . . GULLY TRAP
- . . WATER METER
- . . FIRE HYDRANT
- . . STOP VALVE
- . . ELECTRICITY PILLAR
- . . COMMS PIT
- . . RING MAIN UNIT
- . . LIGHT POLE
- DESIGN CONTOURS
- EXISTING SURFACE CONTOURS
- DESIGN FILL
- S--- SEWERAGE
- SW--- STORMWATER
- W--- WATER PIPE
- UE--- UNDERGROUND ELECTRICITY
- T--- COMMS LINE
- OPTIONAL BUILT TO BOUNDARY WALL
- FSL 3.44 FINISHED SURFACE LEVEL
- RETAINING WALL
- FOOTPATH
- RH 0.9 RETAINING WALL HEIGHT
- AVG RH 0.9 AVERAGE RETAINING WALL HEIGHT

Notes:

- Final areas are subject to design changes, Council approval and field survey and may differ from those shown on this Disclosure Plan.
- Final presentation of areas will comply with requirements of the Registrar of Titles and may vary from the format on this Disclosure Plan
- "The Seller is entitled to make a Permitted Variation (as defined in Special Condition 3 of the contract) to the lot including its location, area, size, dimensions and elevation".
- Design contours are approximate only and may change during construction
- Services have been plotted from design information only and may change during construction
- All earthworks fill to lots has been placed and compacted on Level 1 basis in accordance with Australian Standard AS3798-2007 "Guidelines on earthworks for commercial and residential developments".



gassman development perspectives
 est 1985
 planning | environment | landscape | engineering | survey
 T: 3807 3333 | F: 3287 5461 | www.gassman.com.au
 LOGAN & Logan | 176 Business Street, Yatala QLD | PO Box 392, Beenleigh 4207

Client	AVJENNINGS Pty Ltd
Project	DISCLOSURE PLAN LOT 2128 (Survey plan: SP280869) RIVERTON Cusack Lane, Jimboomba

Locality	JIMBOOMBA	Issue Date	16/03/2022
Local Govt	LOGAN CITY COUNCIL	Meridian	SP280865
Scale (on A4 original)	1:250	Level Datum	AHD
		Contour Interval	0.2 m Design 0.5m Existing
		Drawn	S.Chowdhury
		Date Drafted	20/08/2021
		Checked	A.Geraghty

Real Property Description:
 Lot 701 on SP280865

REFERENCE No. 5544-2C
PLAN No. 5544 S DC LOT 2128A

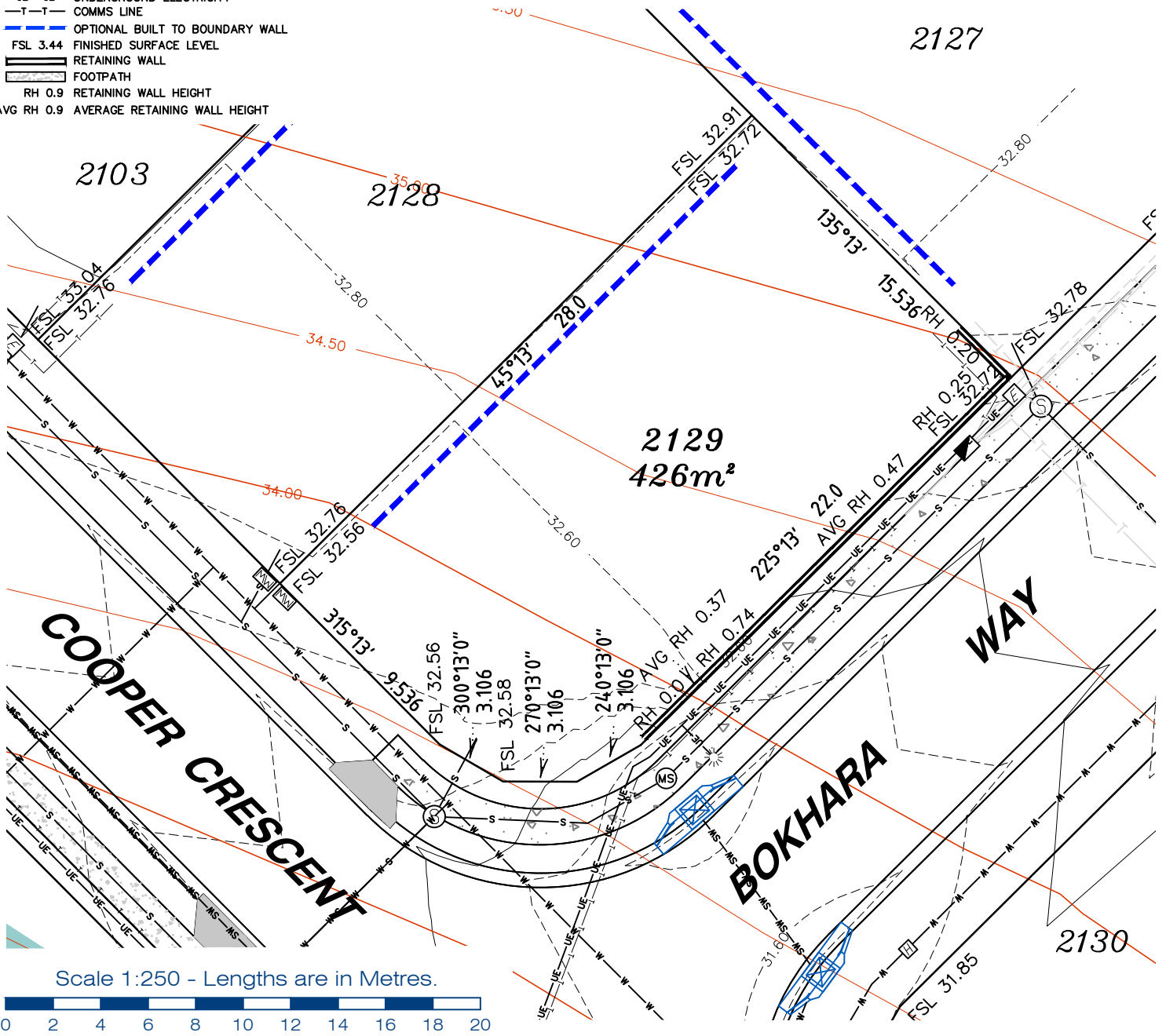


Notes:

- Final areas are subject to design changes, Council approval and field survey and may differ from those shown on this Disclosure Plan.
- Final presentation of areas will comply with requirements of the Registrar of Titles and may vary from the format on this Disclosure Plan
- "The Seller is entitled to make a Permitted Variation (as defined in Special Condition 3 of the contract) to the lot including its location, area, size, dimensions and elevation".
- Design contours are approximate only and may change during construction
- Services have been plotted from design information only and may change during construction
- All earthworks fill to lots has been placed and compacted on Level 1 basis in accordance with Australian Standard AS3798-2007 "Guidelines on earthworks for commercial and residential developments".

LEGEND

- . . SEWER MANHOLE
- . . SEWER MAINTENANCE SHAFT
- . . SEWER RODDING END
- . . STORMWATER MANHOLE
- . . GULLY TRAP
- . . WATER METER
- . . FIRE HYDRANT
- . . STOP VALVE
- . . ELECTRICITY PILLAR
- . . COMMS PIT
- . . RING MAIN UNIT
- . . LIGHT POLE
- DESIGN CONTOURS
- EXISTING SURFACE CONTOURS
- DESIGN FILL
- S --- SEWERAGE
- SW --- SW --- STORMWATER
- W --- W --- WATER PIPE
- UE --- UE --- UNDERGROUND ELECTRICITY
- T --- T --- COMMS LINE
- OPTIONAL BUILT TO BOUNDARY WALL
- FSL 3.44 FINISHED SURFACE LEVEL
- RETAINING WALL
- FOOTPATH
- RH 0.9 RETAINING WALL HEIGHT
- AVG RH 0.9 AVERAGE RETAINING WALL HEIGHT



Scale 1:250 - Lengths are in Metres.



gassman
development
perspectives

est 1985

planning | environment | landscape | engineering | survey

T: 3807 3333 | F: 3287 5461 | www.gassman.com.au

LOGAN & Logan | 76 Business Street, Yatala QLD | PO Box 392, Beenleigh 4207

Client	AVJENNINGS Pty Ltd
Project	DISCLOSURE PLAN LOT 2129 (Survey plan: SP280869) RIVERTON Cusack Lane, Jimboomba

Locality	JIMBOOMBA	Issue Date	16/03/2022
Local Govt	LOGAN CITY COUNCIL	Meridian	SP280865
Scale (on A4 original)	1:250	Level Datum	AHD
		Contour Interval	0.2 m Design 0.5m Existing
		Drawn	S.Chowdhury
		Date Drafted	20/08/2021
		Checked	A.Geraghty

Real Property Description:
Lot 701 on SP280865

REFERENCE No. **5544-2C**
PLAN No. **5544 S DC LOT 2129A**

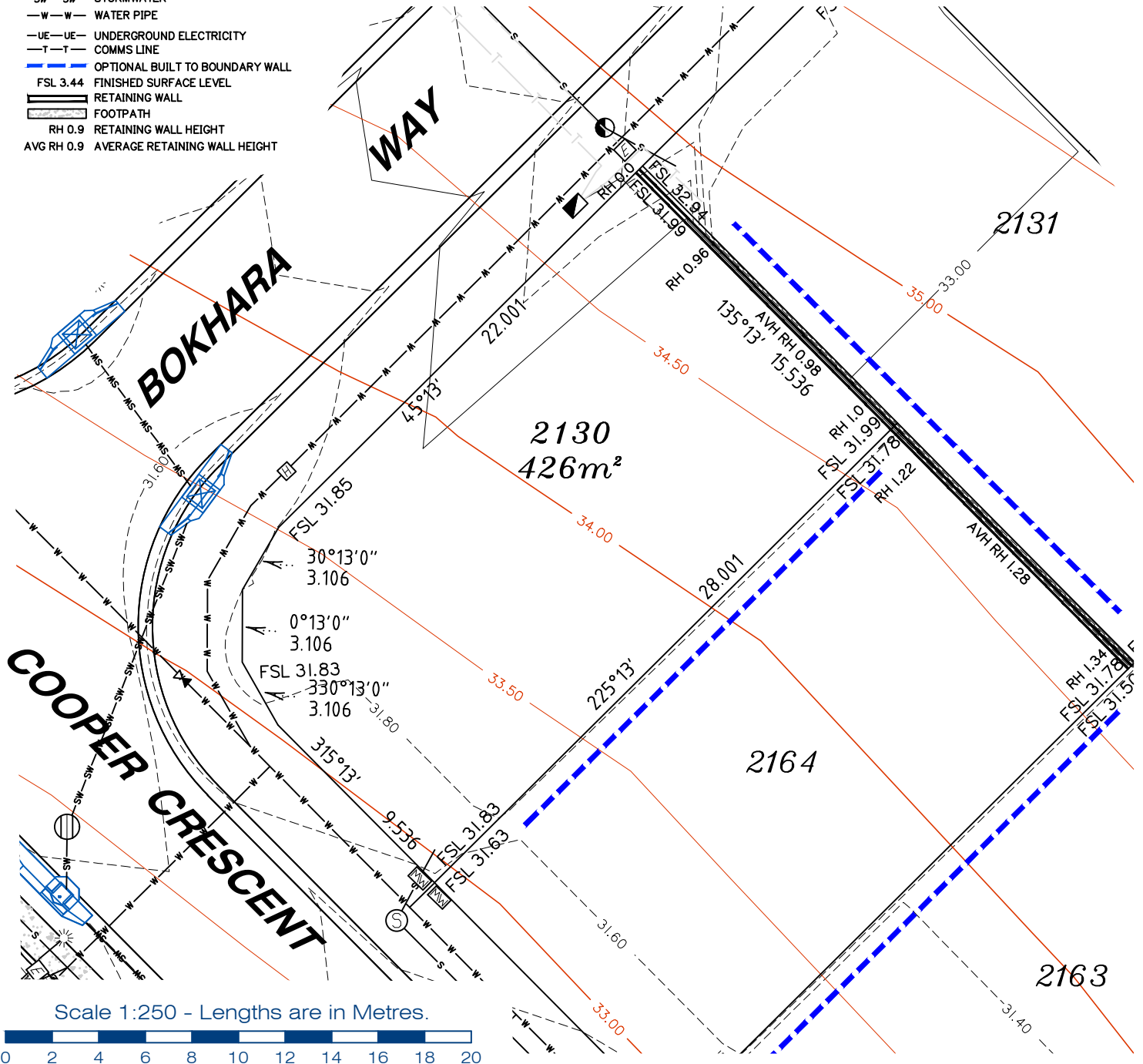


LEGEND

- . . SEWER MANHOLE
- . . SEWER MAINTENANCE SHAFT
- . . SEWER RODDING END
- . . STORMWATER MANHOLE
- . . GULLY TRAP
- . . WATER METER
- . . FIRE HYDRANT
- . . STOP VALVE
- . . ELECTRICITY PILLAR
- . . COMMS PIT
- . . RING MAIN UNIT
- . . LIGHT POLE
- . . DESIGN CONTOURS
- . . EXISTING SURFACE CONTOURS
- . . DESIGN FILL
- . . SEWERAGE
- . . STORMWATER
- . . WATER PIPE
- . . UNDERGROUND ELECTRICITY
- . . COMMS LINE
- . . OPTIONAL BUILT TO BOUNDARY WALL
- . . FINISHED SURFACE LEVEL
- . . RETAINING WALL
- . . FOOTPATH
- . . RETAINING WALL HEIGHT
- . . AVERAGE RETAINING WALL HEIGHT

Notes:

- Final areas are subject to design changes, Council approval and field survey and may differ from those shown on this Disclosure Plan.
- Final presentation of areas will comply with requirements of the Registrar of Titles and may vary from the format on this Disclosure Plan
- "The Seller is entitled to make a Permitted Variation (as defined in Special Condition 3 of the contract) to the lot including its location, area, size, dimensions and elevation".
- Design contours are approximate only and may change during construction
- Services have been plotted from design information only and may change during construction
- All earthworks fill to lots has been placed and compacted on Level 1 basis in accordance with Australian Standard AS3798-2007 "Guidelines on earthworks for commercial and residential developments".



gassman
development
perspectives

est 1985

planning | environment | landscape | engineering | survey

T: 3807 3333 | F: 3287 5461 | www.gassman.com.au

LOGAN & Logan | 76 Business Street, Yatala QLD | PO Box 392, Beenleigh 4207

Client	AVJENNINGS Pty Ltd
Project	DISCLOSURE PLAN LOT 2130 (Survey plan: SP280869) RIVERTON Cusack Lane, Jimboomba

Locality	JIMBOOMBA	Issue Date	22/06/2022
Local Govt	LOGAN CITY COUNCIL	Meridian	SP280865
Scale (on A4 original)	1:250	Level Datum	AHD
		Contour Interval	0.2 m Design 0.5m Existing
		Drawn	S.Chowdhury
		Date Drafted	20/08/2021
		Checked	A.Geraghty

Real Property Description:
Lot 701 on SP280865

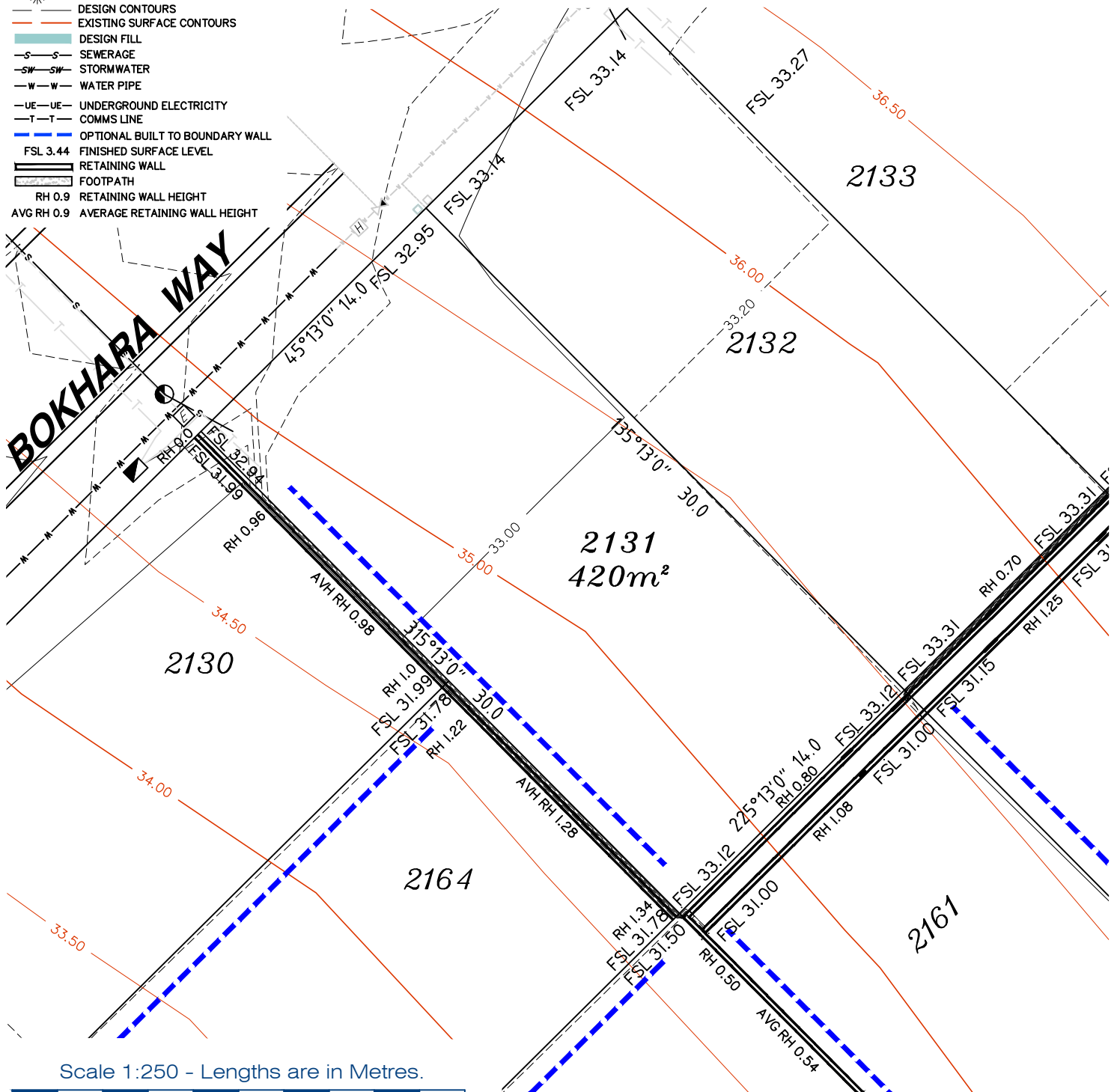
REFERENCE No. **5544-2C**
PLAN No. **5544 S DC LOT 2130C**

LEGEND

- . . SEWER MANHOLE
- . . SEWER MAINTENANCE SHAFT
- . . SEWER RODDING END
- . . STORMWATER MANHOLE
- . . GULLY TRAP
- . . WATER METER
- . . FIRE HYDRANT
- . . STOP VALVE
- . . ELECTRICITY PILLAR
- . . COMMS PIT
- . . RING MAIN UNIT
- . . LIGHT POLE
- . . DESIGN CONTOURS
- . . EXISTING SURFACE CONTOURS
- . . DESIGN FILL
- . . SEWERAGE
- . . STORMWATER
- . . WATER PIPE
- . . UNDERGROUND ELECTRICITY
- . . COMMS LINE
- . . OPTIONAL BUILT TO BOUNDARY WALL
- . . FINISHED SURFACE LEVEL
- . . RETAINING WALL
- . . FOOTPATH
- . . RH 0.9 RETAINING WALL HEIGHT
- . . AVG RH 0.9 AVERAGE RETAINING WALL HEIGHT

Notes:

- Final areas are subject to design changes, Council approval and field survey and may differ from those shown on this Disclosure Plan.
- Final presentation of areas will comply with requirements of the Registrar of Titles and may vary from the format on this Disclosure Plan
- "The Seller is entitled to make a Permitted Variation (as defined in Special Condition 3 of the contract) to the lot including its location, area, size, dimensions and elevation".
- Design contours are approximate only and may change during construction
- Services have been plotted from design information only and may change during construction
- All earthworks fill to lots has been placed and compacted on Level 1 basis in accordance with Australian Standard AS3798-2007 "Guidelines on earthworks for commercial and residential developments".



Scale 1:250 - Lengths are in Metres.



planning | environment | landscape | engineering | survey

T: 3807 3333 | F: 3287 5461 | www.gassman.com.au

LOGAN & Logan | 176 Business Street, Yatala QLD | PO Box 392, Beenleigh 4207

Client	AVJENNINGS Pty Ltd
Project	DISCLOSURE PLAN LOT 2131 (Survey plan: SP280869) RIVERTON Cusack Lane, Jimboomba

Locality	JIMBOOMBA	Issue Date	22/06/2022
Local Govt	LOGAN CITY COUNCIL	Meridian	SP280865
Scale (on A4 original)	1:250	Level Datum	AHD
		Contour Interval	0.2 m Design 0.5m Existing
		Drawn	S.Chowdhury
		Date Drafted	20/08/2021
		Checked	A.Geraghty

Real Property Description:
Lot 701 on SP280865

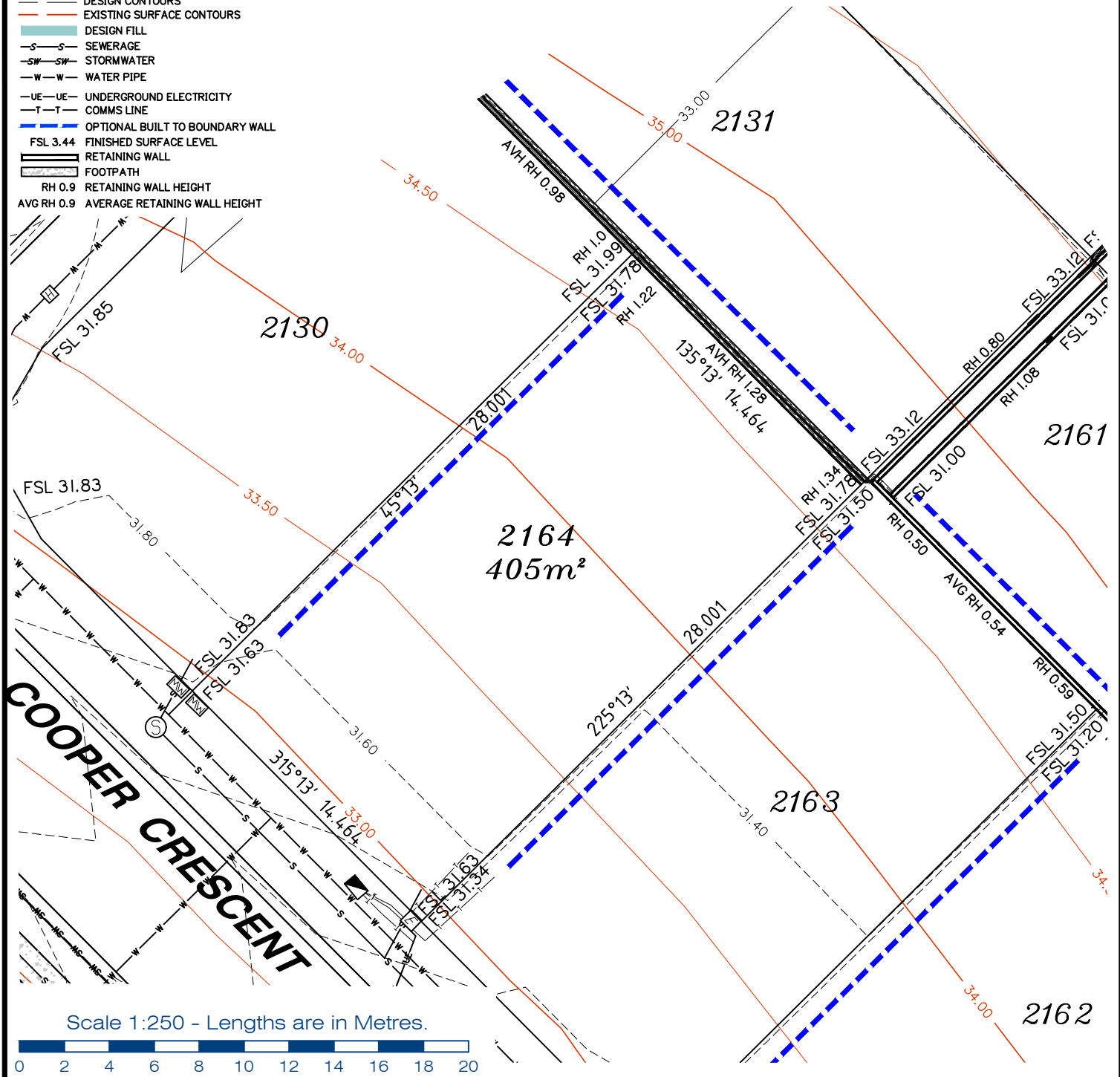
REFERENCE No. **5544-2C**
PLAN No. **5544 S DC LOT 2131C**



- Notes:**
- Final areas are subject to design changes, Council approval and field survey and may differ from those shown on this Disclosure Plan.
 - Final presentation of areas will comply with requirements of the Registrar of Titles and may vary from the format on this Disclosure Plan
 - "The Seller is entitled to make a Permitted Variation (as defined in Special Condition 3 of the contract) to the lot including its location, area, size, dimensions and elevation".
 - Design contours are approximate only and may change during construction
 - Services have been plotted from design information only and may change during construction
 - All earthworks fill to lots has been placed and compacted on Level 1 basis in accordance with Australian Standard AS3798-2007 "Guidelines on earthworks for commercial and residential developments".

LEGEND

- . . SEWER MANHOLE
- . . SEWER MAINTENANCE SHAFT
- . . SEWER RODDING END
- . . STORMWATER MANHOLE
- . . GULLY TRAP
- . . WATER METER
- . . FIRE HYDRANT
- . . STOP VALVE
- . . ELECTRICITY PILLAR
- . . COMMS PIT
- . . RING MAIN UNIT
- . . LIGHT POLE
- DESIGN CONTOURS
- EXISTING SURFACE CONTOURS
- DESIGN FILL
- S-S SEWERAGE
- SW-SW STORMWATER
- W-W WATER PIPE
- UE-UE UNDERGROUND ELECTRICITY
- T-T COMMS LINE
- OPTIONAL BUILT TO BOUNDARY WALL
- FSL 3.44 FINISHED SURFACE LEVEL
- RETAINING WALL
- FOOTPATH
- RH 0.9 RETAINING WALL HEIGHT
- AVG RH 0.9 AVERAGE RETAINING WALL HEIGHT



Scale 1:250 - Lengths are in Metres.



T: 3807 3333 | F: 3287 5461 | www.gassman.com.au
 LOGAN & Logan | 76 Business Street, Yatala QLD | PO Box 392, Beenleigh 4207

Client	AVJENNINGS Pty Ltd
Project	DISCLOSURE PLAN LOT 2164 (Survey plan: SP280869) RIVERTON Cusack Lane, Jimboomba

Locality	JIMBOOMBA	Issue Date	22/06/2022
Local Govt	LOGAN CITY COUNCIL	Meridian	SP280865
Scale (on A4 original)	1:250	Level Datum	AHD
		Contour Interval	0.2 m Design 0.5m Existing
		Drawn	S.Chowdhury
		Date Drafted	10/08/2021
		Checked	A.Geraghty

Real Property Description:
 Lot 701 on SP280865

REFERENCE No. **5544-2C**
 PLAN No. **5544 S DC LOT 2164C**

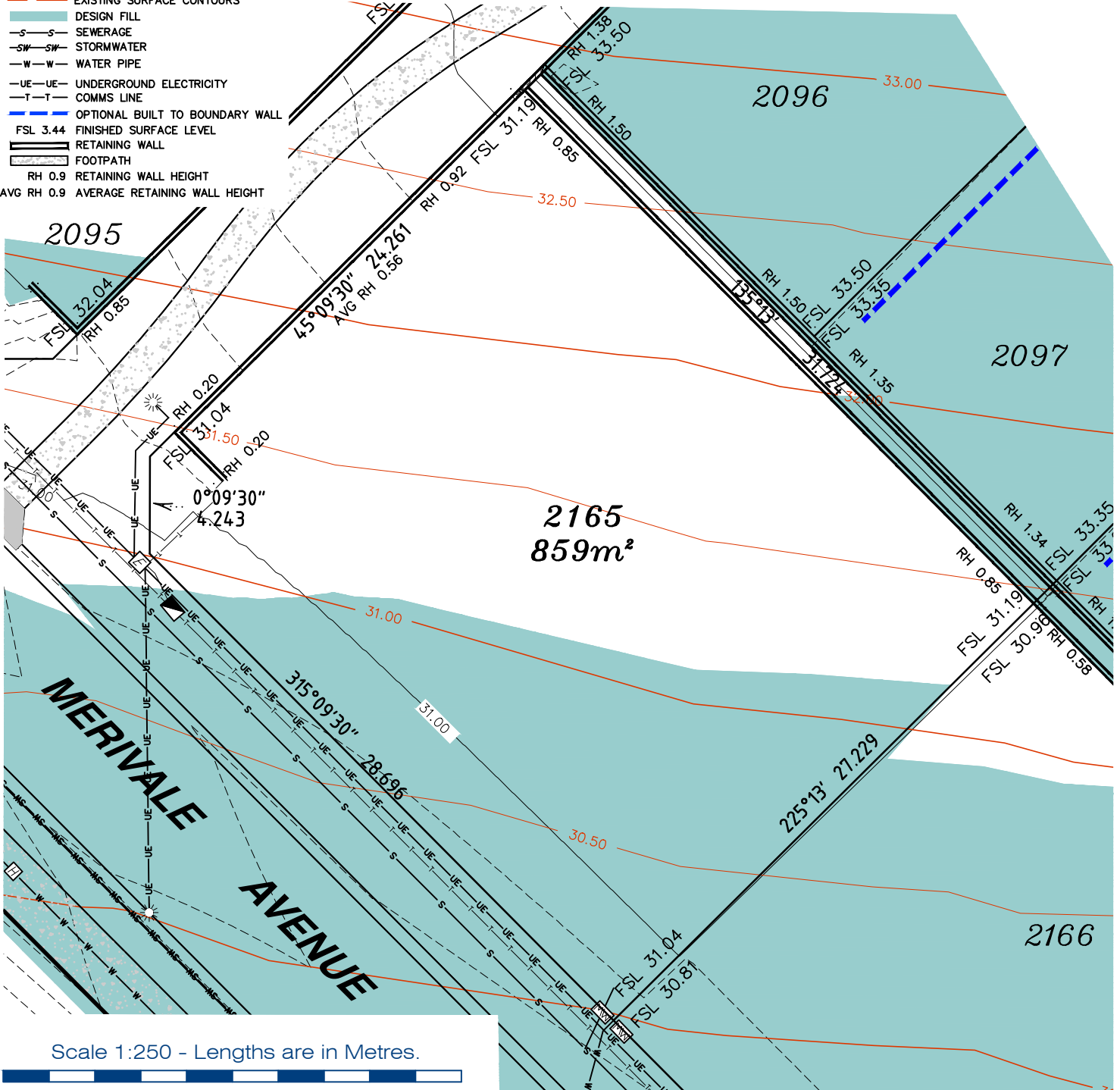


LEGEND

- . . SEWER MANHOLE
- . . SEWER MAINTENANCE SHAFT
- . . SEWER RODDING END
- . . STORMWATER MANHOLE
- . . GULLY TRAP
- . . WATER METER
- . . FIRE HYDRANT
- . . STOP VALVE
- . . ELECTRICITY PILLAR
- . . COMMS PIT
- . . RING MAIN UNIT
- . . LIGHT POLE
- DESIGN CONTOURS
- EXISTING SURFACE CONTOURS
- DESIGN FILL
- S---S SEWERAGE
- SW---SW STORMWATER
- W---W WATER PIPE
- UE---UE UNDERGROUND ELECTRICITY
- T---T COMMS LINE
- OPTIONAL BUILT TO BOUNDARY WALL
- FSL 3.44 FINISHED SURFACE LEVEL
- RETAINING WALL
- FOOTPATH
- RH 0.9 RETAINING WALL HEIGHT
- AVG RH 0.9 AVERAGE RETAINING WALL HEIGHT

Notes:

- Final areas are subject to design changes, Council approval and field survey and may differ from those shown on this Disclosure Plan.
- Final presentation of areas will comply with requirements of the Registrar of Titles and may vary from the format on this Disclosure Plan
- "The Seller is entitled to make a Permitted Variation (as defined in Special Condition 3 of the contract) to the lot including its location, area, size, dimensions and elevation".
- Design contours are approximate only and may change during construction
- Services have been plotted from design information only and may change during construction
- All earthworks fill to lots has been placed and compacted on Level 1 basis in accordance with Australian Standard AS3798-2007 "Guidelines on earthworks for commercial and residential developments".



gassman development perspectives
est 1985

planning | environment | landscape | engineering | survey

T: 3807 3333 | F: 3287 5461 | www.gassman.com.au

LOGAN & Logan | 76 Business Street, Yatala QLD | PO Box 392, Beenleigh 4207

Client	AVJENNINGS Pty Ltd
Project	DISCLOSURE PLAN LOT 2165 (Survey plan: SP280869) RIVERTON Cusack Lane, Jimboomba

Locality	JIMBOOMBA	Issue Date	16/03/2022
Local Govt	LOGAN CITY COUNCIL	Meridian	SP280865
Scale (on A4 original)	1:250	Level Datum	AHD
		Contour Interval	0.2 m Design 0.5m Existing
		Drawn	S.Chowdhury
		Date Drafted	10/07/2021
		Checked	A.Geraghty

Real Property Description:
Lot 701 on SP280865

REFERENCE No. **5544-2C**
PLAN No. **5544 S DC LOT 2165A**



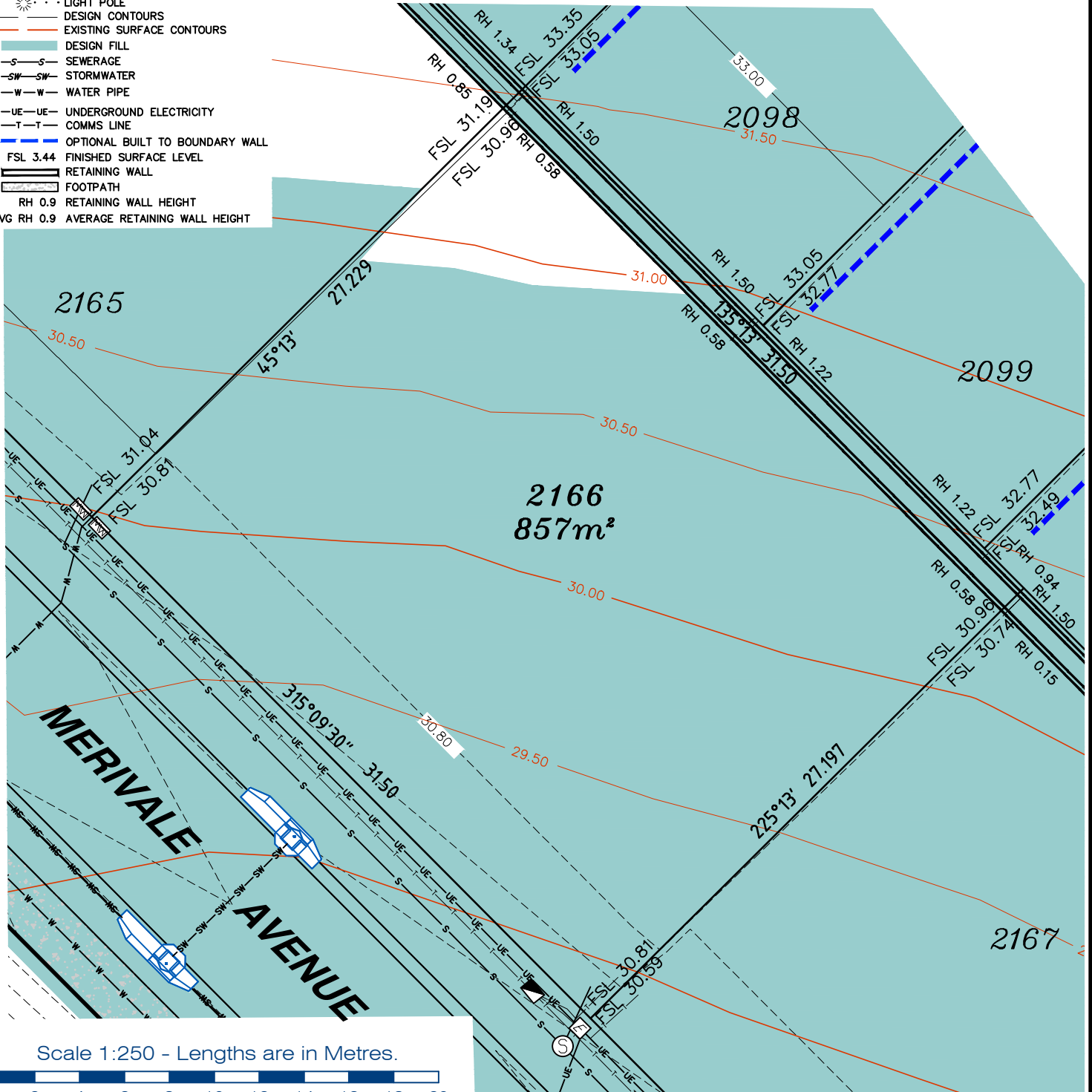
LEGEND

- . . SEWER MANHOLE
- . . SEWER MAINTENANCE SHAFT
- . . SEWER RODDING END
- . . STORMWATER MANHOLE
- . . GULLY TRAP
- . . WATER METER
- . . FIRE HYDRANT
- . . STOP VALVE
- . . ELECTRICITY PILLAR

- . . COMMS PIT
- . . RING MAIN UNIT
- . . LIGHT POLE
- . . DESIGN CONTOURS
- . . EXISTING SURFACE CONTOURS
- . . DESIGN FILL
- . . SEWERAGE
- . . STORMWATER
- . . WATER PIPE
- . . UNDERGROUND ELECTRICITY
- . . COMMS LINE
- . . OPTIONAL BUILT TO BOUNDARY WALL
- . . FINISHED SURFACE LEVEL
- . . FOOTPATH
- . . RH 0.9
- . . AVG RH 0.9

Notes:

- Final areas are subject to design changes, Council approval and field survey and may differ from those shown on this Disclosure Plan.
- Final presentation of areas will comply with requirements of the Registrar of Titles and may vary from the format on this Disclosure Plan
- "The Seller is entitled to make a Permitted Variation (as defined in Special Condition 3 of the contract) to the lot including its location, area, size, dimensions and elevation".
- Design contours are approximate only and may change during construction
- Services have been plotted from design information only and may change during construction
- All earthworks fill to lots has been placed and compacted on Level 1 basis in accordance with Australian Standard AS3798-2007 "Guidelines on earthworks for commercial and residential developments".



Scale 1:250 - Lengths are in Metres.



gassman development perspectives
est 1985

planning | environment | landscape | engineering | survey

T: 3807 3333 | F: 3287 5461 | www.gassman.com.au

LOGAN & Logan | 176 Business Street, Yatala QLD | PO Box 392, Beenleigh 4207

Client	AVJENNINGS Pty Ltd
Project	DISCLOSURE PLAN LOT 2166 (Survey plan: SP280869) RIVERTON Cusack Lane, Jimboomba

Locality	JIMBOOMBA	Issue Date	16/03/2022
Local Govt	LOGAN CITY COUNCIL	Meridian	SP280865
Scale (on A4 original)	1:250	Level Datum	AHD
		Contour Interval	0.2 m Design 0.5m Existing
		Drawn	S.Chowdhury
		Date Drafted	10/08/2021
		Checked	A.Geraghty

Real Property Description:
Lot 701 on SP280865

REFERENCE No. **5544-2C**
PLAN No. **5544 S DC LOT 2166A**

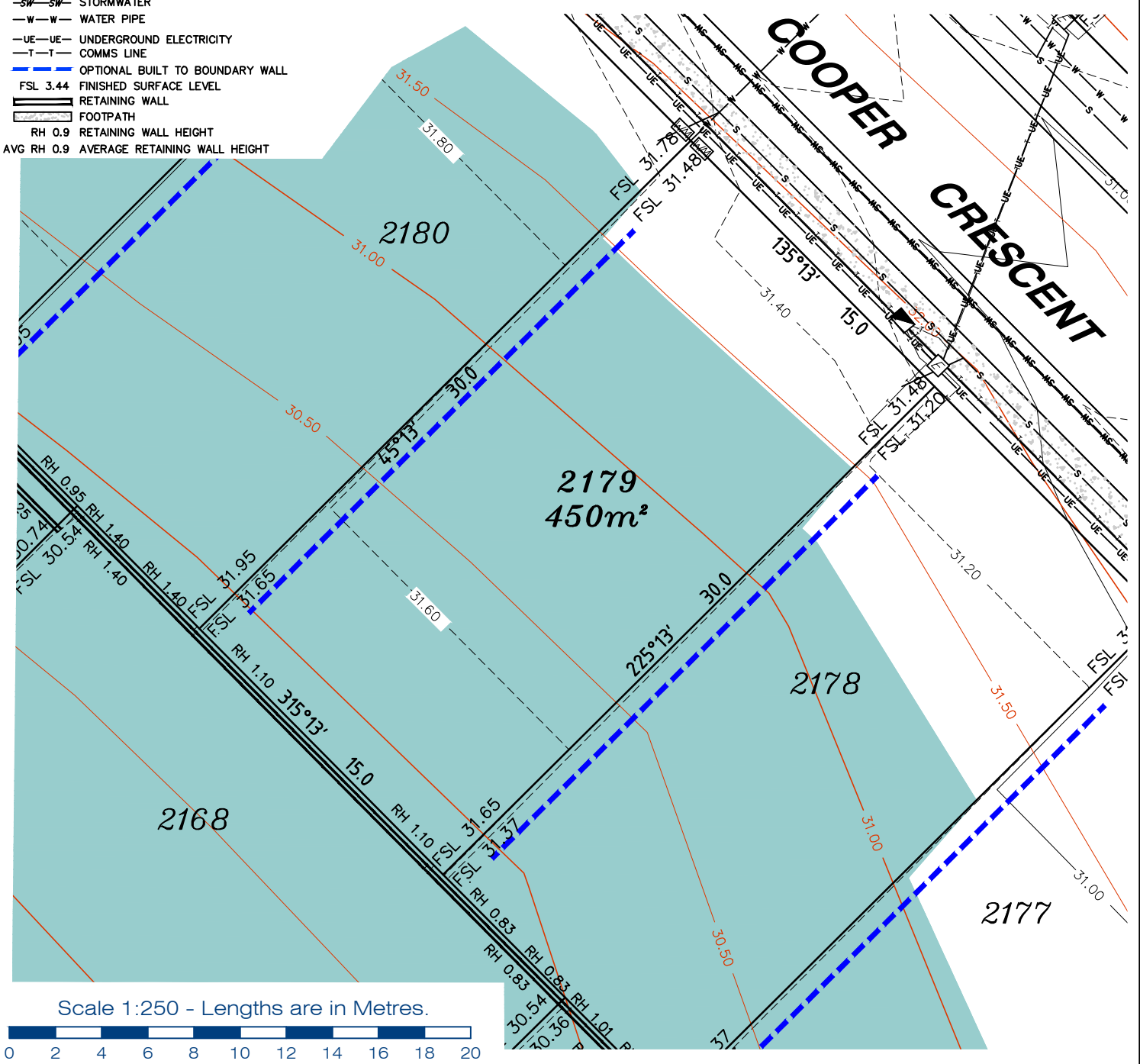


LEGEND

- ⊙ . . SEWER MANHOLE
- ⊙ . . SEWER MAINTENANCE SHAFT
- ⊙ . . SEWER RODDING END
- ⊙ . . STORMWATER MANHOLE
- ⊙ . . GULLY TRAP
- ⊙ . . WATER METER
- ⊙ . . FIRE HYDRANT
- ⊙ . . STOP VALVE
- ⊙ . . ELECTRICITY PILLAR
- ⊙ . . COMMS PIT
- ⊙ . . RING MAIN UNIT
- ⊙ . . LIGHT POLE
- — — DESIGN CONTOURS
- — — EXISTING SURFACE CONTOURS
- — — DESIGN FILL
- S—S— SEWERAGE
- SW—SW— STORMWATER
- W—W— WATER PIPE
- UE—UE— UNDERGROUND ELECTRICITY
- T—T— COMMS LINE
- — — OPTIONAL BUILT TO BOUNDARY WALL
- — — FSL 3.44 FINISHED SURFACE LEVEL
- — — RETAINING WALL
- — — FOOTPATH
- RH 0.9 RETAINING WALL HEIGHT
- AVG RH 0.9 AVERAGE RETAINING WALL HEIGHT

Notes:

- Final areas are subject to design changes, Council approval and field survey and may differ from those shown on this Disclosure Plan.
- Final presentation of areas will comply with requirements of the Registrar of Titles and may vary from the format on this Disclosure Plan
- "The Seller is entitled to make a Permitted Variation (as defined in Special Condition 3 of the contract) to the lot including its location, area, size, dimensions and elevation".
- Design contours are approximate only and may change during construction
- Services have been plotted from design information only and may change during construction
- All earthworks fill to lots has been placed and compacted on Level 1 basis in accordance with Australian Standard AS3798-2007 "Guidelines on earthworks for commercial and residential developments".



gassman development perspectives
est 1985

planning | environment | landscape | engineering | survey

T: 3807 3333 | F: 3287 5461 | www.gassman.com.au

LOGAN & Logan | 176 Business Street, Yatala QLD | PO Box 392, Beenleigh 4207

Client	AVJENNINGS Pty Ltd
Project	DISCLOSURE PLAN LOT 2179 (Survey plan: SP280869) RIVERTON Cusack Lane, Jimboomba

Locality	JIMBOOMBA	Issue Date	16/03/2022
Local Govt	LOGAN CITY COUNCIL	Meridian	SP280865
Scale (on A4 original)	1:250	Level Datum	AHD
		Contour Interval	0.2 m Design 0.5m Existing
		Drawn	S.Chowdhury
		Date Drafted	20/08/2021
		Checked	A.Geraghty

Real Property Description:
Lot 701 on SP280865

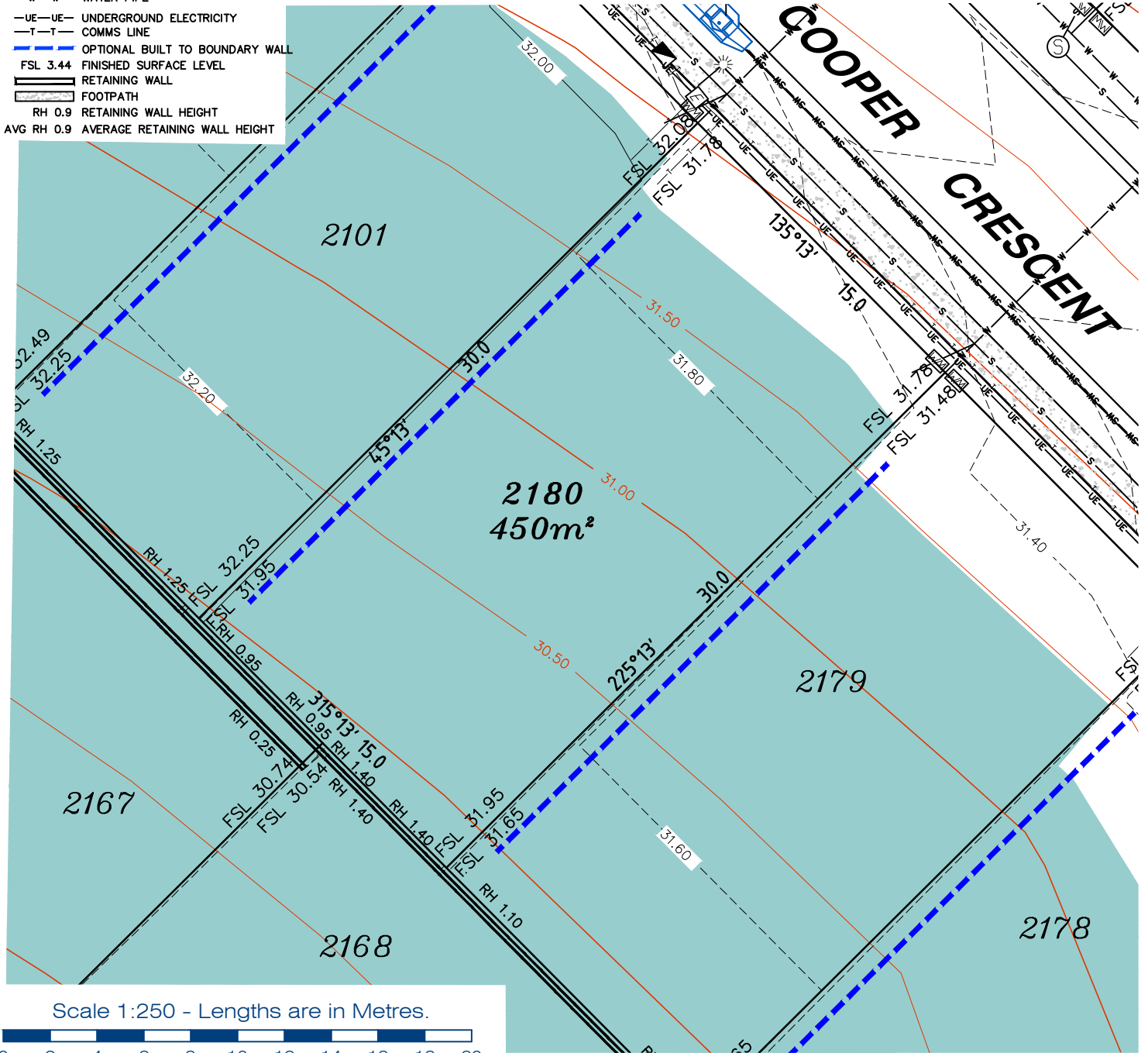
REFERENCE No. **5544-2C**
PLAN No. **5544 S DC LOT 2179A**

LEGEND

- . . SEWER MANHOLE
- . . SEWER MAINTENANCE SHAFT
- . . SEWER RODDING END
- . . STORMWATER MANHOLE
- . . GULLY TRAP
- . . WATER METER
- . . FIRE HYDRANT
- . . STOP VALVE
- . . ELECTRICITY PILLAR
- . . COMMS PIT
- . . RING MAIN UNIT
- . . LIGHT POLE
- . . DESIGN CONTOURS
- . . EXISTING SURFACE CONTOURS
- . . DESIGN FILL
- . . SEWERAGE
- . . STORMWATER
- . . WATER PIPE
- . . UNDERGROUND ELECTRICITY
- . . COMMS LINE
- . . OPTIONAL BUILT TO BOUNDARY WALL
- . . FINISHED SURFACE LEVEL
- . . RETAINING WALL
- . . FOOTPATH
- . . RETAINING WALL HEIGHT
- . . AVERAGE RETAINING WALL HEIGHT

Notes:

- Final areas are subject to design changes, Council approval and field survey and may differ from those shown on this Disclosure Plan.
- Final presentation of areas will comply with requirements of the Registrar of Titles and may vary from the format on this Disclosure Plan
- "The Seller is entitled to make a Permitted Variation (as defined in Special Condition 3 of the contract) to the lot including its location, area, size, dimensions and elevation".
- Design contours are approximate only and may change during construction
- Services have been plotted from design information only and may change during construction
- All earthworks fill to lots has been placed and compacted on Level 1 basis in accordance with Australian Standard AS3798-2007 "Guidelines on earthworks for commercial and residential developments".



Scale 1:250 - Lengths are in Metres.



gassman
development
perspectives

est 1985

planning | environment | landscape | engineering | survey

T: 3807 3333 | F: 3287 5461 | www.gassman.com.au

LOGAN & Logan | 176 Business Street, Yatala QLD | PO Box 392, Beenleigh 4207

Client	AVJENNINGS Pty Ltd
Project	DISCLOSURE PLAN LOT 2180 (Survey plan: SP280869) RIVERTON Cusack Lane, Jimboomba

Locality	JIMBOOMBA	Issue Date	16/03/2022
Local Govt	LOGAN CITY COUNCIL	Meridian	SP280865
Scale (on A4 original)	1:250	Level Datum	AHD
		Contour Interval	0.2 m Design 0.5m Existing
		Drawn	S.Chowdhury
		Date Drafted	20/08/2021
		Checked	A.Geraghty

Real Property Description:
Lot 701 on SP280865

REFERENCE No. **5544-2C**
PLAN No. **5544 S DC LOT 2180A**