



Operational Works No: OW/170/2021

Consulting Engineers Certification

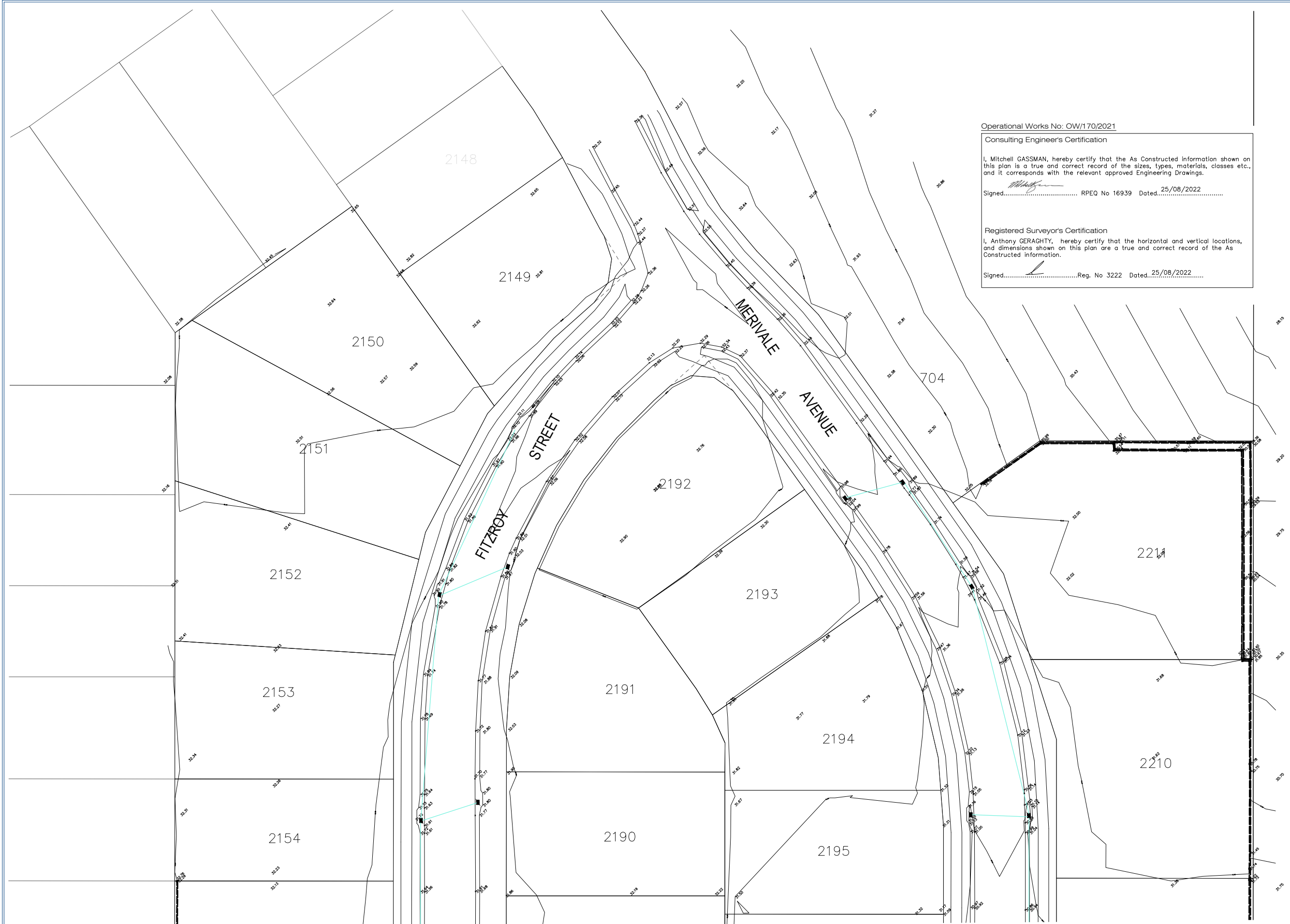
I, Mitchell GASSMAN, hereby certify that the As Constructed information shown on this plan is a true and correct record of the sizes, types, materials, classes etc., and it corresponds with the relevant approved Engineering Drawings.

Signed..... RPEQ No 16939 Dated..25/08/2022.....

Registered Surveyor's Certification

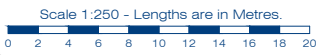
I, Anthony GERAGHTY, hereby certify that the horizontal and vertical locations, and dimensions shown on this plan are a true and correct record of the As Constructed information.

Signed..... Reg. No 3222 Dated..25/08/2022.....



FEATURE LEGEND

- SW MANHOLE
- GULLY PIT
- ▬ DRAINWAY
- FIELD INLET
- ∩ HEADWALL
- TOP/BOTTOM OF BANK
- ▬ RETAINING WALL
- SURFACE LEVEL
- ~ 0.25m CONTOUR



JOINT TO SHEET 2



planning | environment | landscape | engineering | survey  
T: 3807 3333 | F: 3287 5461 | www.gassman.com.au  
Gold Coast & Logan | 176 Business Street, Yatala QLD | PO Box 392, Beenleigh 4207

Issue	Date	Description	SC	AG
-	20/05/2022	ORIGINAL ISSUE	SC	AG
			DRN	CHK

Project: RIVERTON STAGE 2CD  
JIMBOOMBA

Client: AVJENNINGS SPV NO. 20 PTY LTD

© 2012 Gassman Development Perspectives  
All rights reserved. No part of this document may be reproduced or transmitted in any form or by any means, electronic, mechanical, photocopying, recording, or otherwise, without the written permission of Gassman Development Perspectives.

Scale at A1:	1:250
Date:	12-09-22
Surveyed:	TH
Drawn:	SC
Checked:	TH

Drawing Title:  
AS CONSTRUCTED PLAN  
STAGE 2CD - EARTH WORKS  
SHEET 1 OF 5

Drawing No: 5544-250-STG 2CD EARTH WORKS  
Revision No: -

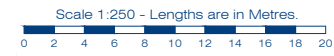


2209  
Operational Works No: OW/170/2021

**Consulting Engineers Certification**  
I, Mitchell GASSMAN, hereby certify that the As Constructed information shown on this plan is a true and correct record of the sizes, types, materials, classes etc., and it corresponds with the relevant approved Engineering Drawings.  
Signed: \_\_\_\_\_ RPEQ No 16939 Dated: 25/08/2022

**Registered Surveyor's Certification**  
I, Anthony GERAGHTY, hereby certify that the horizontal and vertical locations, and dimensions shown on this plan are a true and correct record of the As Constructed information.  
Signed: \_\_\_\_\_ Reg. No 3222 Dated: 25/08/2022

- FEATURE LEGEND**
- SW MANHOLE
  - GULLY PIT
  - ▭ DRAINWAY
  - ▭ FIELD INLET
  - ▭ HEADWALL
  - TOP/BOTTOM OF BANK
  - RETAINING WALL
  - SURFACE LEVEL
  - 0.25m CONTOUR



JOINT TO SHEET 4

JOINT TO SHEET 3



planning | environment | landscape | engineering | survey  
T: 3807 3333 | F: 3287 5461 | www.gassman.com.au  
Gold Coast & Logan | 176 Business Street, Yatala QLD | PO Box 392, Beenleigh 4207

Issue	Date	Description	SC	TH
-	20/05/2022	ORIGINAL ISSUE	SC	TH
			DRN	CHK

Project: **RIVERTON STAGE 2CD  
JIMBOOMBA**

Client: **AVJENNINGS SPV NO. 20 PTY LTD**

© 2012 Gassman Development Perspectives. All rights reserved. No part of this document may be reproduced or transmitted in any form or by any means, electronic, mechanical, photocopying, recording, or otherwise, without the written permission of Gassman Development Perspectives.

Scale at A1: **1:250**

Date: **12-09-22**

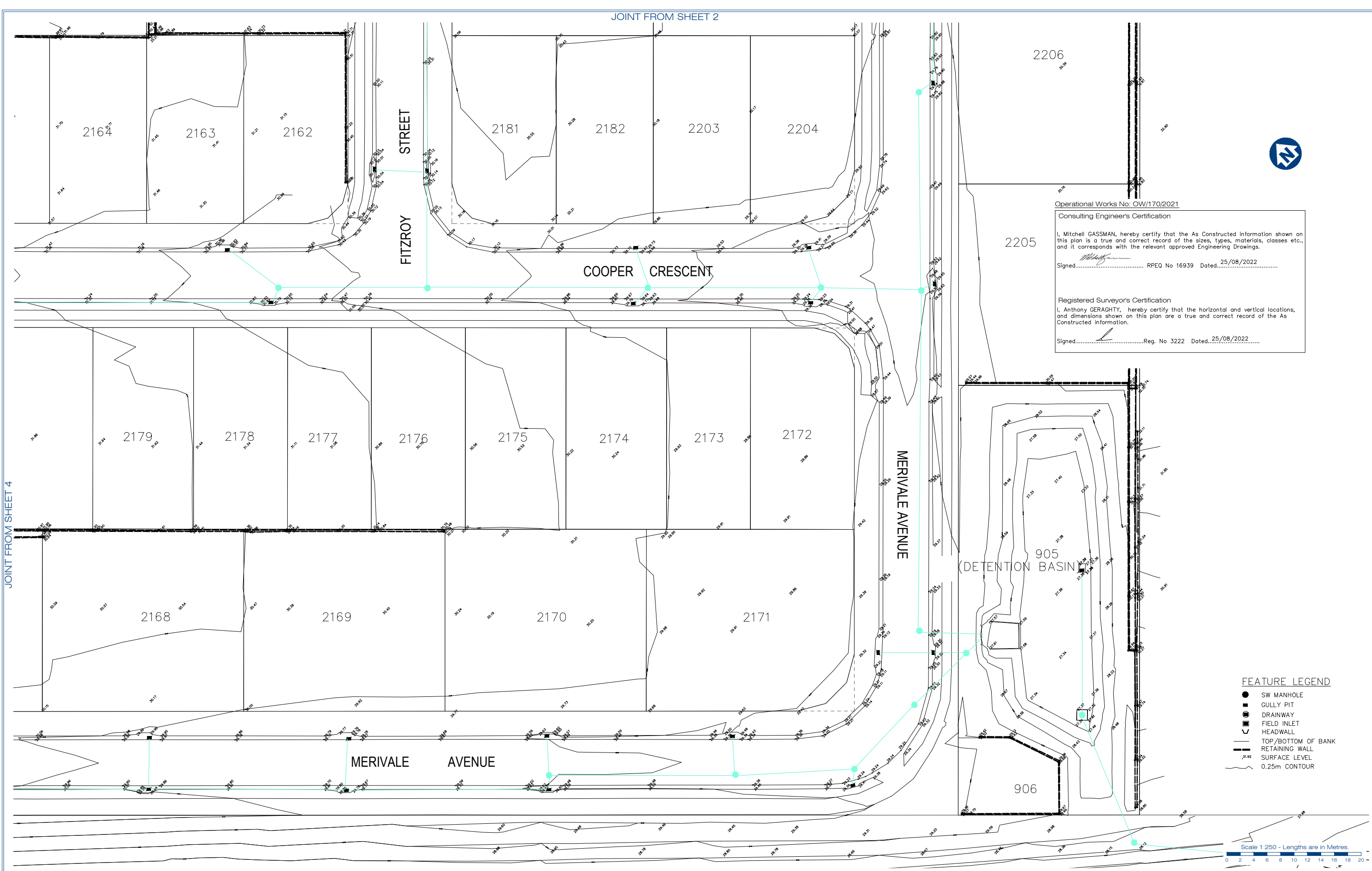
Surveyed: **TH**

Drawn: **SC**

Checked: **TH**

Drawing Title: **AS CONSTRUCTED PLAN  
STAGE 2CD - EARTH WORKS  
SHEET 2 OF 5**

Drawing No: **5544-250-STG 2CD EARTH WORKS**      Revision No: **-**



Operational Works No: OW/170/2021

Consulting Engineer's Certification

I, Mitchell GASSMAN, hereby certify that the As Constructed information shown on this plan is a true and correct record of the sizes, types, materials, classes etc., and it corresponds with the relevant approved Engineering Drawings.

Signed: *[Signature]* RPEQ No 16939 Dated: 25/08/2022

Registered Surveyor's Certification

I, Anthony GERAGHTY, hereby certify that the horizontal and vertical locations, and dimensions shown on this plan are a true and correct record of the As Constructed information.

Signed: *[Signature]* Reg. No 3222 Dated: 25/08/2022

- FEATURE LEGEND**
- SW MANHOLE
  - GULLY PIT
  - DRAINWAY
  - ▭ FIELD INLET
  - ▭ HEADWALL
  - TOP/BOTTOM OF BANK
  - ▬ RETAINING WALL
  - SURFACE LEVEL
  - ~ 0.25m CONTOUR

Scale 1:250 - Lengths are in Metres.

0 2 4 6 8 10 12 14 16 18 20

JOINT FROM SHEET 4

JOINT FROM SHEET 2

gassman  
development  
perspectives

est. 1985

planning | environment | landscape | engineering | survey

T: 3807 3333 | F: 3287 5461 | www.gassman.com.au

Gold Coast & Logan | 176 Business Street, Yatala QLD | PO Box 392, Beenleigh 4207

Issue	Date	Description	SC	AG	DRN	CHK
-	20/05/2022	ORIGINAL ISSUE				

Project: **RIVERTON STAGE 2CD**  
**JIMBOOMBA**

Client: **AVJENNINGS SPV NO. 20 PTY LTD**

© 2012 Gassman Development Perspectives. All rights reserved. No part of this document may be reproduced or transmitted in any form or by any means, electronic, mechanical, photocopying, recording, or otherwise, without the written permission of Gassman Development Perspectives.

Scale at A1: **1:250**

Date: **12-09-22**

Surveyed: **TH**

Drawn: **SC**

Checked: **TH**

Drawing Title: **AS CONSTRUCTED PLAN**  
**STAGE 2CD - EARTH WORKS**  
**SHEET 3 OF 5**

Drawing No: **5544-250-STG 2B EARTH WORKS**

Revision No: **-**



Operational Works No. OW/170/2021

Consulting Engineer's Certification

I, Mitchell GASSMAN, hereby certify that the As Constructed information shown on this plan is a true and correct record of the sizes, types, materials, classes etc., and it corresponds with the relevant approved Engineering Drawings.

Signed: *[Signature]* RPEQ No 16939 Dated: 25/08/2022

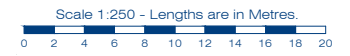
Registered Surveyor's Certification

I, Anthony GERAGHTY, hereby certify that the horizontal and vertical locations, and dimensions shown on this plan are a true and correct record of the As Constructed information.

Signed: *[Signature]* Reg. No 3222 Dated: 25/08/2022

JOINT TO SHEET 2

- FEATURE LEGEND**
- SW MANHOLE
  - GULLY PIT
  - ▣ DRAINWAY
  - ▤ FIELD INLET
  - ▥ HEADWALL
  - TOP/BOTTOM OF BANK
  - RETAINING WALL
  - SURFACE LEVEL
  - 0.25m CONTOUR



gassman development perspectives

est. 1985

planning | environment | landscape | engineering | survey

T: 3807 3333 | F: 3287 5461 | www.gassman.com.au

Gold Coast & Logan | 176 Business Street, Yatala QLD | PO Box 392, Beenleigh 4207

Issue	Date	Description	SC	AG	DRN	CHK
-	20/05/2022	ORIGINAL ISSUE				

Project: **RIVERTON STAGE 2CD**  
JIMBOOMBA

Client: **AVJENNINGS SPV NO. 20 PTY LTD**

© 2012 Gassman Development Perspectives. All rights reserved. No part of this document may be reproduced or transmitted in any form or by any means, electronic, mechanical, photocopying, recording, or otherwise, without the written permission of Gassman Development Perspectives.

Scale at A1: **1:250**

Date: **12-09-22**

Surveyed: **TH**

Drawn: **SC**

Checked: **TH**

Drawing Title: **AS CONSTRUCTED PLAN**  
**STAGE 2CD - EARTH WORKS**  
**SHEET 4 OF 5**

Drawing No: **5544-250-STG 2CD EARTH WORKS** Revision No: **-**



Operational Works No: OW/170/2021

Consulting Engineer's Certification

I, Mitchell GASSMAN, hereby certify that the As Constructed information shown on this plan is a true and correct record of the sizes, types, materials, classes etc., and it corresponds with the relevant approved Engineering Drawings.

Signed..... RPEQ No 16939 Dated..25/08/2022.....

Registered Surveyor's Certification

I, Anthony GERAGHTY, hereby certify that the horizontal and vertical locations, and dimensions shown on this plan are a true and correct record of the As Constructed information.

Signed.....Reg. No 3222 Dated..25/08/2022.....

MERVILLE AVENUE

COOPER CRESCENT

2092

2093

2094

2095

2086

FEATURE LEGEND

- SW MANHOLE
- GULLY PIT
- DRAINWAY
- FIELD INLET
- ▭ HEADWALL
- TOP/BOTTOM OF BANK
- ▬ RETAINING WALL
- SURFACE LEVEL
- ~ 0.25m CONTOUR

Scale 1:250 - Lengths are in Metres.

JOINT FROM SHEET 4



planning | environment | landscape | engineering | survey  
T: 3807 3333 | F: 3287 5461 | www.gassman.com.au  
Gold Coast & Logan | 176 Business Street, Yatala QLD | PO Box 392, Beenleigh 4207

Issue	Date	Description	SC	AG	DRN	CHK
-	20/05/2022	ORIGINAL ISSUE	SC	AG		

Project:

RIVERTON STAGE 2CD  
JIMBOOMBA

Client:

AVJENNINGS SPV NO. 20 PTY LTD

©2012 Gassman Development Perspectives  
All rights reserved. No part of this document may be reproduced or transmitted in any form or by any means, electronic, mechanical, photocopying, recording, or otherwise, without the written permission of Gassman Development Perspectives.

Scale at A1:

1:250

Date:

12-09-22

Surveyed:

TH

Drawn:

SC

Checked:

TH

Drawing Title:

AS CONSTRUCTED PLAN  
STAGE 2CD - EARTH WORKS  
SHEET 5 OF 5

Drawing No:

5544-250-STG 2CD EARTH WORKS

Revision No:

-