



**LYNDARUM  
NORTH**



# Our experience and your trust

For the past 80 years AVJennings has helped thousands of Australians find their perfect block of land or dream home.

Our years of experience mean our customers trust us to not only provide a place to live, but to create the kind of happy and safe community where they can be proud to raise a family. From the parks you stroll in, the playgrounds your children play in and the streets where you chat with neighbours, we pride ourselves on providing the foundations so you can create your life memories.

**Riverdale  
on Plenty**  
Mernda



**Hazelcroft**  
Doreen

**Lyndarum**  
Epping and Wollert



**Bellevue**  
South Morang

With over 15 years of shaping neighbourhoods within the City of Whittlesea we have gained valuable insights into what it takes to create vibrant, connected and active communities. We know the area, understand the landscape, and take great care to be sympathetic to the nature of the environment. The process is well thought out, and every element is carefully considered and it is this attention to detail that means our developments win awards.



# *A great success story*

*Lyndarum North*

—  
A PLACE TO COLLECT THE MEMORIES THAT  
MAKE A GOOD LIFE GROW EVEN BETTER

LYNDARUM HAS ALREADY BEEN A GREAT SUCCESS  
STORY, MATURING BEAUTIFULLY INTO A VIBRANT  
COMMUNITY. AND SO WE'VE BEEN ABLE TO CHERRY  
PICK THE BEST, USING THAT EXPERIENCE AS A  
SOLID BASE FOR A NEW LYNDARUM NORTH.

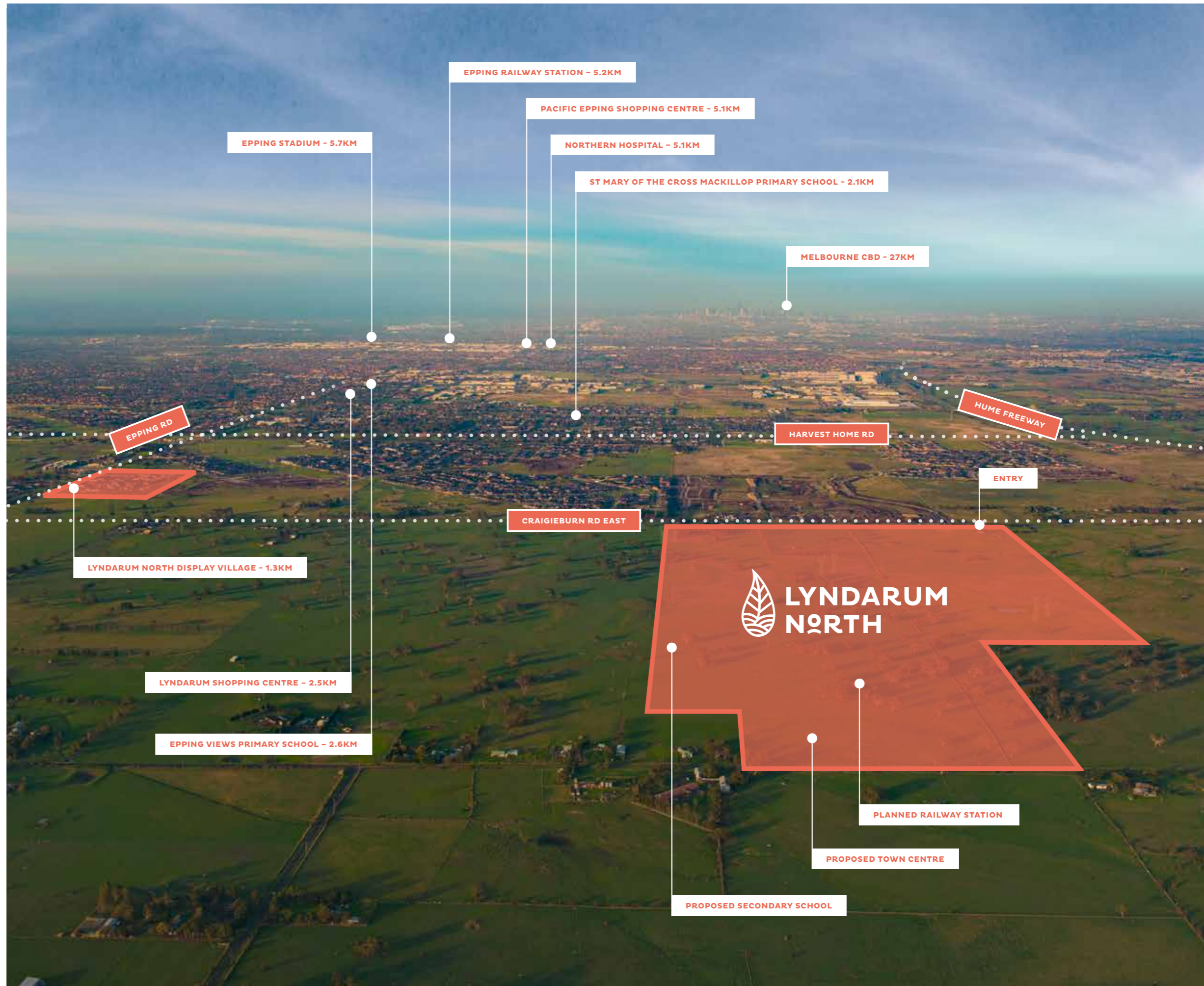
OUR NEWEST COMMUNITY PROVIDES US WITH A  
GREAT OPPORTUNITY TO WORK FROM THE GROUND  
UP TO CREATE THE IDEAL FOOTPRINT FOR THE  
BEST KIND OF COMMUNITY.

OUR PLAN FOR OPEN SPACES BREATHES LIFE  
INTO THE NEIGHBOURHOOD THROUGH SHARED  
PARKLANDS, COMMUNAL GARDENS, INTIMATE  
CORNERS AND MAGICAL VIEWS. EVEN OUR  
BLUEPRINT FOR ROADS AND PATHWAYS IS  
CAREFULLY CHOREOGRAPHED TO BRING LITTLE  
MOMENTS OF SURPRISE TO YOUR DAY.

# A desirable community

Lyndarum North makes the most of not just the local infrastructure, but also the natural beauty of the surrounding landscape.

- 27 km from Melbourne’s CBD
- Exciting development taking place throughout the region
- Proximity to the Metropolitan Ring Road, Hume Freeway and Epping Road – offering easy access to airports, docks and central Melbourne
- Craigieburn Station just 4km away
- Significant new public transport links in the pipeline
- Great new town centre planned in Lyndarum North
- Expansive rural area close by to the north
- Proposed medical centre, childcare facilities, school and café



## *A place to play, explore and live together.*

Lyndarum North will offer an abundance of parks and places to play with awesome facilities for children.

Poised to be the benchmark community in the region for beautiful landscaping and innovative urban design, exploring will become your favourite pastime. Find safe open spaces or quirky cafes for socialising. Or set out in the countryside, making the most of our rural setting.



There is so much room to breathe, you'll have plenty of opportunity to come together or choose to escape on your own.

Uncomplicate life by finding a home with everything you need on your doorstep: schools, public transport, planned medical facilities and childcare, a great road network and numerous choices for shopping and eating out – it's all either right here in Wollert, or on its way.

Whatever your preference for activity or atmosphere, you'll find this place fosters community spirit. And if a good life is a collection of wonderful memories and moments, then we want Lyndarum North to be the perfect place for you to find the time to gather them.





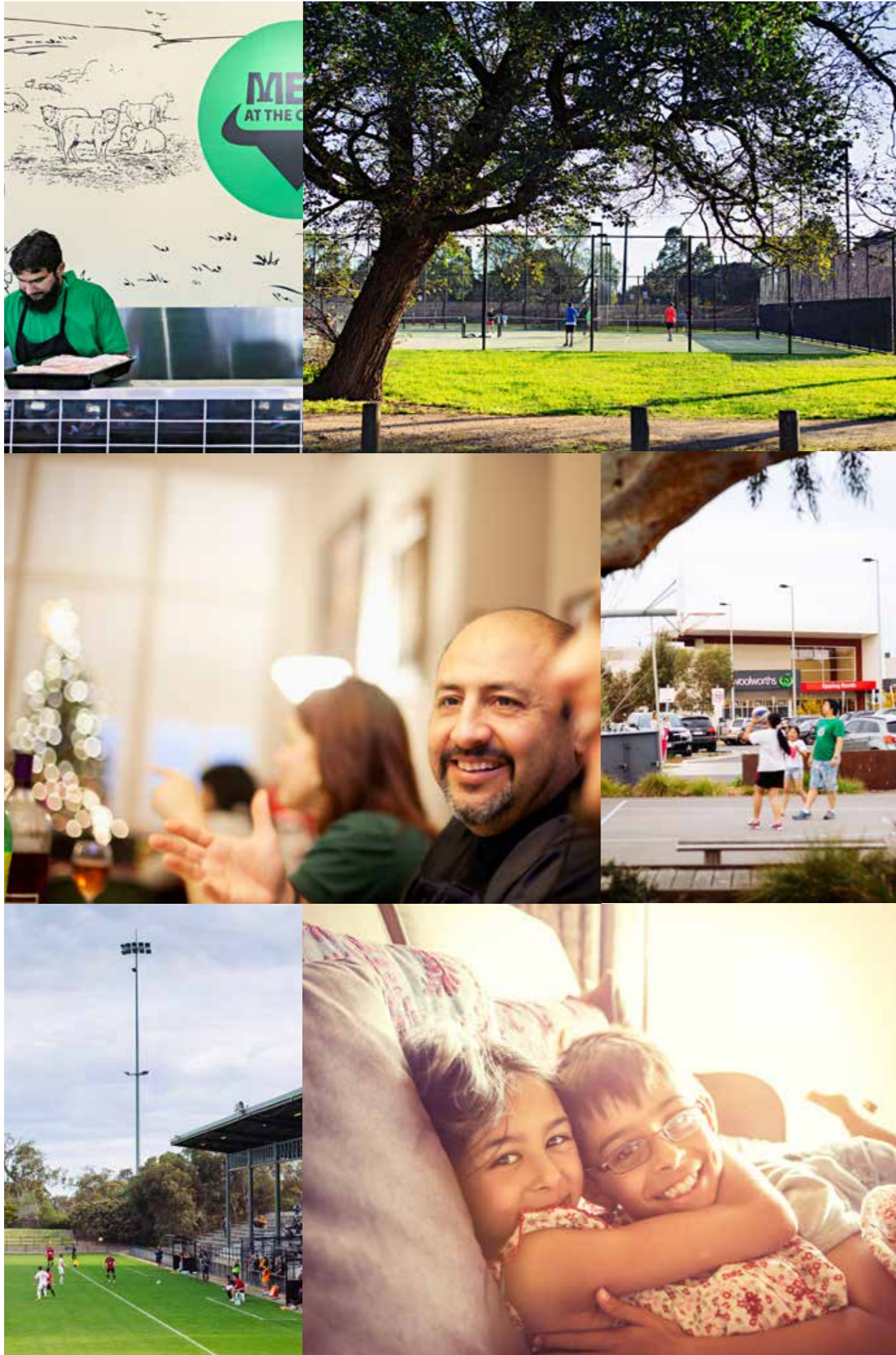


## *A landscape of natural beauty*

Our backdrop is a historic landscape of dry stone walls stretching across grasslands, reaching towards the stony rises and beautiful mountain vistas of Quarry Hills and Plenty Ranges – so characteristic of our area.

But the signature feature of this scenery is the River Red Gums. Their canopies stand proud across the plains, or cluster in distinctive groups providing shelter to a diversity of native wildlife right on the fringes of Lyndarum North. They're so important to our environment that the urban landscape is designed around them.





## *A safe place for every family*

Whether you're looking for a place to watch your kids reach their potential; preparing to strike out on your own; creating memories of a new life together; or looking forward to more relaxed times without the pressures of work – we've created a corner for you to build your life at Lyndarum North.

Whatever your age and background, this warm, diverse, vibrant neighbourhood will embrace you – everyone sharing the same sense of delight with their homes and surroundings.

## A carefully considered design

Retaining the established River Red Gums, and creating conservation areas around them, integrates perfectly with our careful urban design plan. Not forgetting the distinctive entryway, and all the special details that give each little precinct its own unique personality. We've considered every element that impacts the moments of your life, grand and small.



VISIT OUR DISPLAY VILLAGE  
(CORNER DE ROSSI BLVD & EPPING ROAD, WOLLERT)

BEN 0407 852 564  
LYNDARUMNORTH.COM.AU

**AVJennings**

Call 131 878 or visit [avjennings.com.au](http://avjennings.com.au)

All images and descriptions contained in this brochure are indicative only and have been prepared in good faith with due care. Alterations may occur without notice after the date of printing, (June, 2016). No liability for negligence or otherwise is assumed by AVJennings Properties Limited.  
® Registered Trademark. © AVJennings Properties Limited.  
ABN 50 004 601 503. Builders Licence (State Specific).





*The good life just  
keeps getting better*

LYNDARUMNORTH.COM.AU